

Dual Control Lever



User's manuals in other languages are available at : <http://si.shimano.com>

IMPORTANT NOTICE

- Contact the place of purchase or a bicycle dealer for information on installation and adjustment of the products which are not found in the user's manual. A dealer's manual for professional and experienced bicycle mechanics is available on our website (<http://si.shimano.com>).
- Do not disassemble or alter this product.

For safety, be sure to read this user's manual thoroughly before use, and follow them for correct use.

Important Safety Information

Guidelines that require replacement, contact the place of purchase or a bicycle dealer.

WARNING

- It is important to completely understand the operation of your bicycle's brake system. Improper use of your bicycle's brake system may result in a loss of control or a fall, which could lead to severe injury. Because each bicycle may handle differently, be sure to learn the proper braking technique (including brake lever pressure and bicycle control characteristics) and operation of your bicycle. This can be done by consulting your professional bicycle dealer and the bicycle's owners manual, and by practicing your riding and braking technique.
- If the front brake is applied too strongly, the wheel may lock and the bicycle may fall forward, and serious injury may result.
- Always make sure that the front and rear brakes are working correctly before you ride the bicycle.
- The required braking distance will be longer during wet weather. Reduce your speed and apply the brakes early and gently.
- If the road surface is wet, the tires will skid more easily. If the tires skid, you may fall off the bicycle. To avoid this, reduce your speed and apply the brakes early and gently.
- In the case of carbon levers, check before riding that there is no damage such as carbon separation or cracking. If damage is found, do not use it; contact the place of purchase or a bicycle dealer. Otherwise, the lever may break, and braking may become disabled.
- After reading the user's manual carefully, keep it in a safe place for later reference.

Note

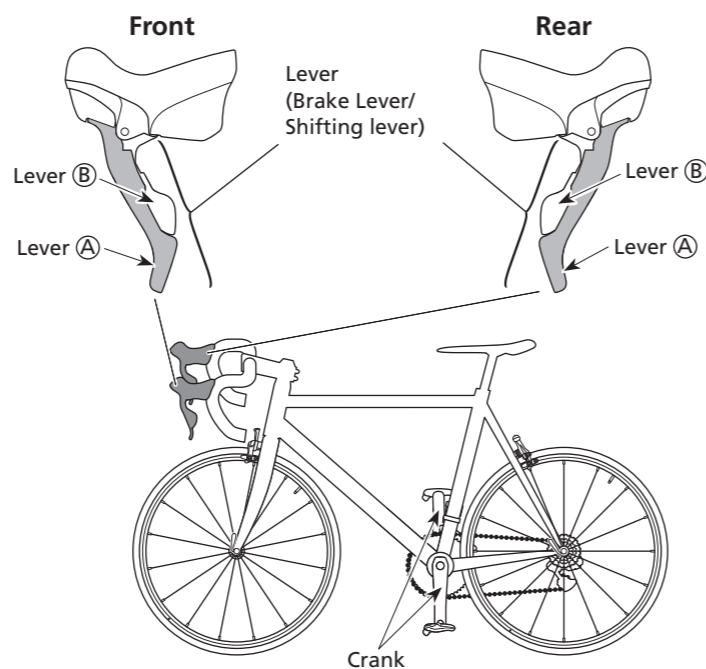
- In the case of carbon levers, wash them by using a soft cloth. Be sure to use a neutral detergent. Otherwise, the material may get damaged, and the strength may be affected.
- Avoid leaving the carbon levers in places where high temperatures are present. Also keep them well away from fire.
- Be sure to keep turning the crank during the lever operation.
- Read the user's manuals for the front derailleur, rear derailleur, and brakes as well.
- Products are not guaranteed against natural wear and deterioration from normal use and aging.
- For maximum performance we highly recommend Shimano lubricants and maintenance products.

Regular inspections before riding the bicycle

Before riding the bicycle, check the following items. If any problems are found with the following items, contact the place of purchase or a bicycle dealer.

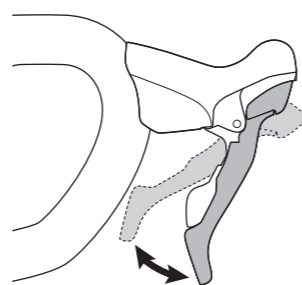
- Do the front and rear brakes work correctly?
- Is gear shifting carried out smoothly?
- Are the levers securely installed to the handlebar?
- Do any abnormal noises occur during operation?

Names of parts



Operation

Braking operation



Gear shifting operation

Be sure to keep turning the crank during the lever operation.

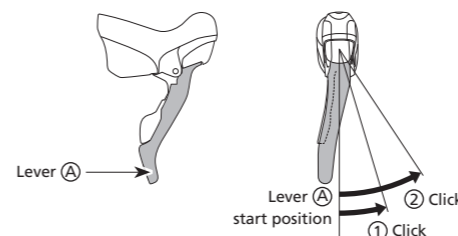
Caution on operation

Both lever A and lever B always return to the start position when they are released after shifting. Do not push levers A and B simultaneously. When the levers are pushed simultaneously, the gears will not shift.

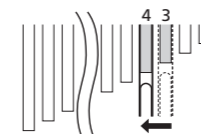
* Some models allow two-step gear shifting.

Operation of rear derailleur lever

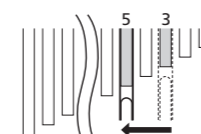
- Lever A : Shifts from smaller to larger rear sprocket. Lever A has a click stop at positions ① and ②.



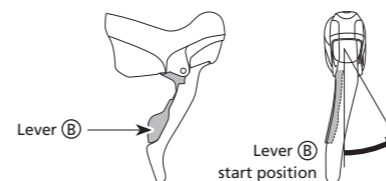
- ① : Shifts one sprocket
E.x. : from 3rd to 4th



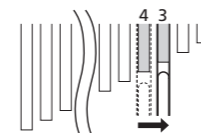
- ② : Quick-shifts two sprockets
E.x. : from 3rd to 5th



- Lever B : Shifts from larger to smaller rear sprocket. Press lever B once to shift from a larger to one smaller sprocket.

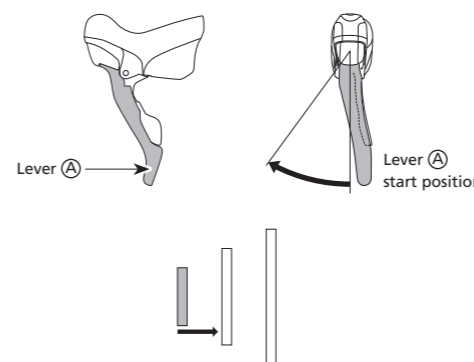


E.x. : from 4th to 3rd



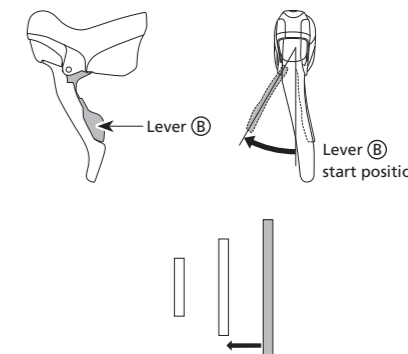
Operation of front derailleur levers

- * The illustration shows the "triple" specification. The method is the same for the "double" specification.
- Lever A : Shifts from smaller to larger front chainring.



Push the lever up to the stopper and then release it. If gear shifting did not complete, push the lever again up to the stopper.

- Lever B : Shifts from larger to smaller front chainring.



Push the lever up to the stopper and then release it.

Trimming (noise prevention mechanism) operation

If the front derailleur comes into contact with the chain and makes noise, perform the following operation to eliminate the noise.

* The illustration shows the "triple" specification. The method is the same for the "double" specification.

Chain position	Trimming operation	Chain position	Trimming operation
	Lever operation		Lever operation
Largest chainring Smaller sprockets	Lever A	Largest chainring Larger sprockets	Lever B
Intermediate chainring Smaller sprockets	Lever A (Hits)	Intermediate chainring Larger sprockets	Lever B (Hits)
Smallest chainring Smaller sprockets		Smallest chainring Larger sprockets	

SHIMANO

SHIMANO NORTH AMERICA BICYCLE, INC.
One Holland, Irvine, California 92618, U.S.A. Phone: +1-949-951-5003

SHIMANO EUROPE B.V. SHIMANO INC.
High Tech Campus 92, 5656 AG Eindhoven, The Netherlands Phone: +31-402-612222 3-77 Oimatsu-cho, Sakai-ku, Sakai-shi, Osaka 590-8577, Japan

Please note: specifications are subject to change for improvement without notice. (English)
© Dec. 2017 by Shimano Inc. ITP