

Bar End Shifting Lever



User's manuals in other languages are available at :
<http://si.shimano.com>

IMPORTANT NOTICE

- Contact the place of purchase or a bicycle dealer for information on installation and adjustment of the products which are not found in the user's manual. A dealer's manual for professional and experienced bicycle mechanics is available on our website (<http://si.shimano.com>).
- Do not disassemble or alter this product.

For safety, be sure to read this user's manual thoroughly before use, and follow them for correct use.

Important Safety Information

Guidelines that require replacement, contact the place of purchase or a bicycle dealer.

⚠ WARNING

- After reading the user's manual carefully, keep it in a safe place for later reference.

Note

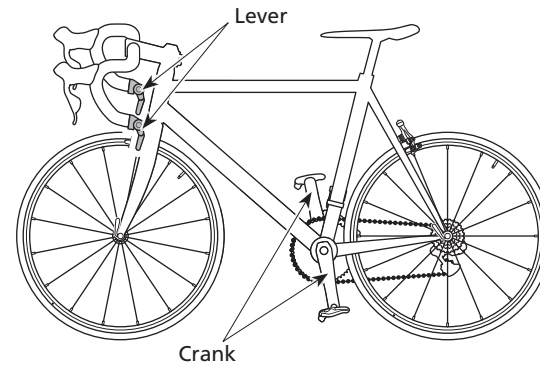
- Be sure to keep turning the crank during the lever operation.
- Products are not guaranteed against natural wear and deterioration from normal use and aging.
- For maximum performance we highly recommend Shimano lubricants and maintenance products.

Regular inspections before riding the bicycle

Before riding the bicycle, check the following items. If any problems are found with the following items, contact the place of purchase or a bicycle dealer.

- Is gear shifting carried out smoothly?
- Do any abnormal noises occur during operation?

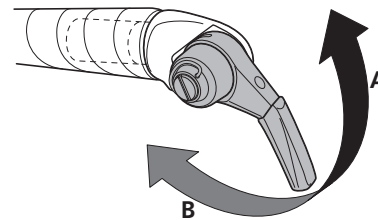
Names of parts



Operation

Be sure to keep turning the crank during the lever operation.

Rear

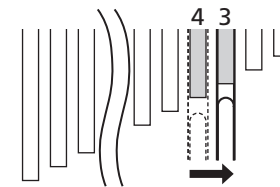
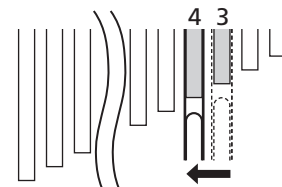


A : Shifts from smaller to larger rear sprocket.

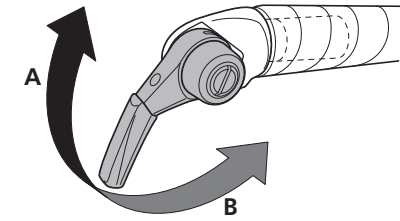
B : Shifts from larger to smaller rear sprocket.

E.x. : from 3rd to 4th

E.x. : from 4th to 3rd



Front

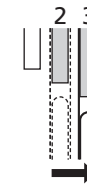


A : Shifts from smaller to larger front chainring.

B : Shifts from larger to smaller front chainring.

E.x. : from 2nd to 3rd

E.x. : from 3rd to 2nd



SHIMANO

SHIMANO AMERICAN CORPORATION
 One Holland, Irvine, California 92618, U.S.A. Phone: +1-949-951-5003

SHIMANO EUROPE B.V.
 Industrieweg 24, 8071 CT Nunspeet, The Netherlands Phone: +31-341-272222

SHIMANO INC.
 3-77 Oimatsu-cho, Sakai-ku, Sakai-shi, Osaka 590-8577, Japan

Please note: specifications are subject to change for improvement without notice. (English)
 © Jun. 2012 by Shimano Inc. HTR