

General Safety Information

WARNING

- A QUICK-LINK can be reused many times, such as when adjusting the length of the chain, but if the whole chain is replaced, then the QUICK-LINK should be replaced also.
- Obtain and read the service instructions carefully prior to installing the parts. We strongly recommend only using genuine Shimano replacement parts.
- Read these Technical Service Instructions carefully, and keep them in a safe place for later reference.

Technical Service Instructions SI-0074A-001

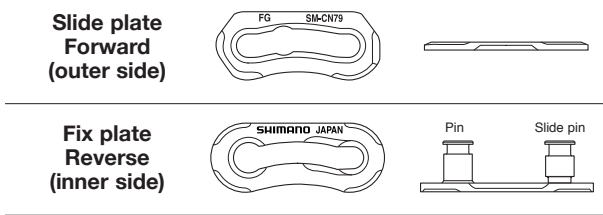
SM-CN79



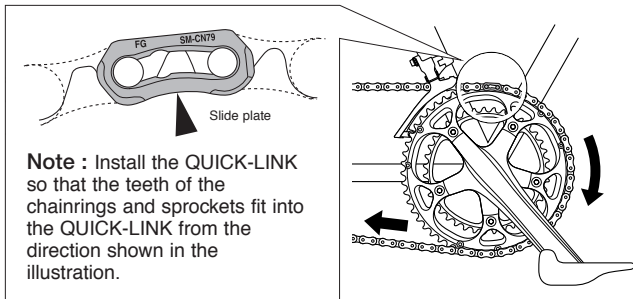
00

QUICK-LINK

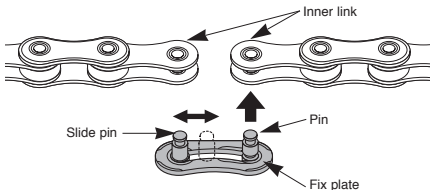
Applicable chain : CN-7900 / 7801 / 6600 / 5600



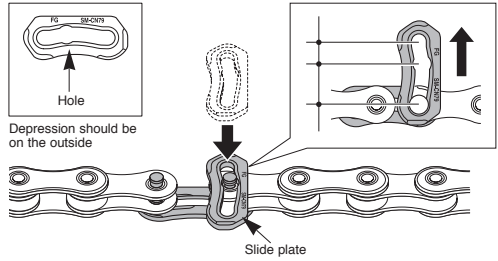
The QUICK-LINK has a forward side and a reverse side. Install the QUICK-LINK so that the slide plate is on the outer side as shown in the illustration. If it is installed in the opposite way, problems with gear shifting may occur.



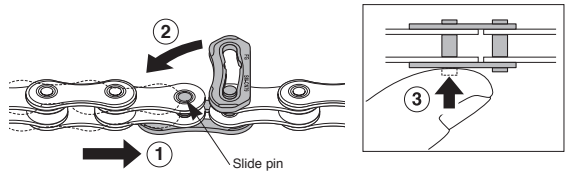
1. Break the chain so that both ends of the chain are at an inner link, and then insert the fix plate section of the QUICK-LINK.



2. Place the hole of the slide plate onto the pin. (The surface of the slide plate with the hollow in it should be on the outside at this time.) Next, slide the slide plate in the direction of the arrow.



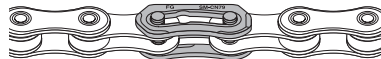
3. Move the slide pin in direction ①, and then rotate the slide plate in direction ②. When the hole is overlapping the slide pin, push the slide pin upward in direction ③ to engage it.



4. While pulling the chain in the direction of the arrow, move the slide pin to set the QUICK-LINK into place.

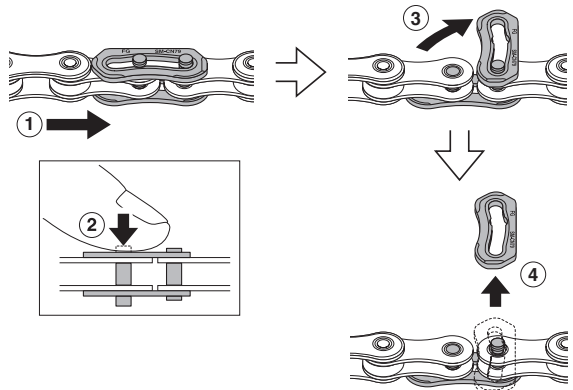


5. Check that the slide plate is securely set into the grooves in both pins.



■ Removal

Remove by following the procedure shown in the illustration.



SHIMANO

SHIMANO AMERICAN CORPORATION
One Holland, Irvine, California 92618, U.S.A. Phone: +1-949-951-5003

SHIMANO EUROPE B.V.
Industrieweg 24, 8071 CT Nunspeet, The Netherlands Phone: +31-341-272222

SHIMANO INC.
3-77 Oimatsu-cho, Sakai-ku, Sakai-shi, Osaka 590-8577, Japan

Please note: specifications are subject to change for improvement without notice. (English)
© Jul. 2008 by Shimano Inc. XBC SZK Printed in Japan.