

## About system power reset

- When the system fails to operate, it may be recovered by resetting the system power.

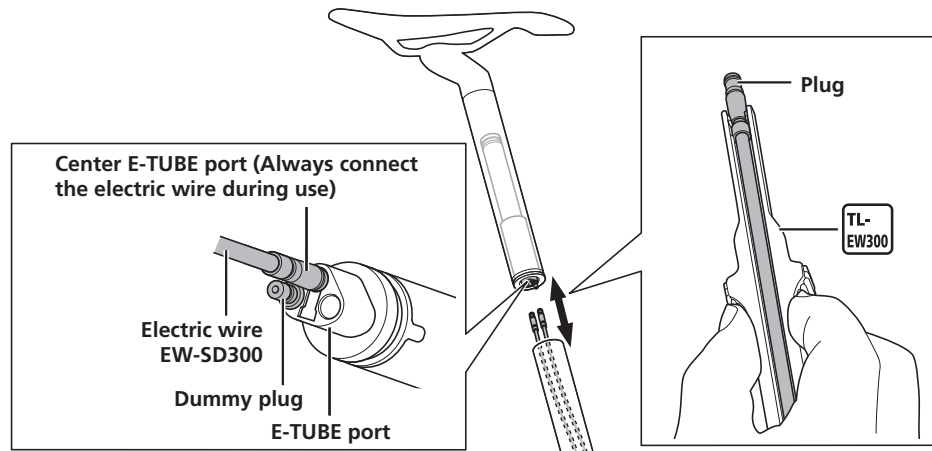
### ■ In the case of a built-in type battery (BT-DN300/BT-DN110-A/BT-DN110/SM-BTR2)

- Remove the plug from BT-DN300/BT-DN110-A/BT-DN110/SM-BTR2. After about one minute, insert the plug.
- The figure below shows one example of the battery installation position. If you find it difficult to insert or remove the plug, consult the place of purchase or a distributor.

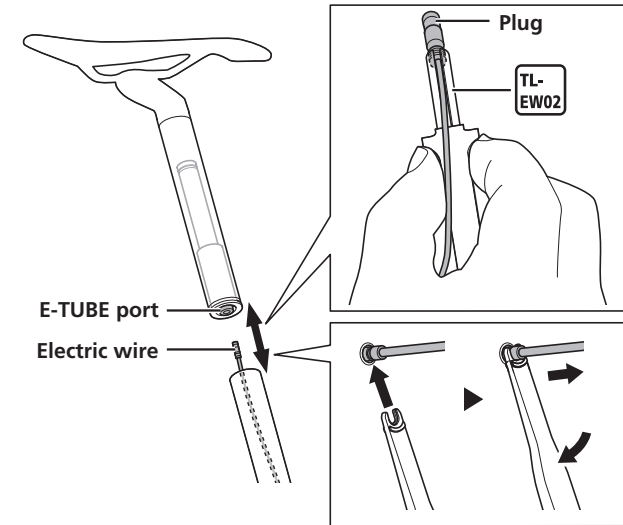
<BT-DN300>

- When using the product, be sure to connect an electric wire to the center E-TUBE port. The product will not operate normally if nothing is connected to the center E-TUBE port.
- If any dummy plugs are attached, connect the electric wire to the original port without removing the dummy plugs.

<BT-DN300>



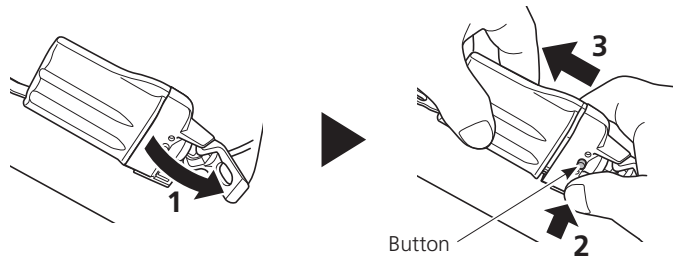
<BT-DN110-A/BT-DN110/SM-BTR2>



### ■ In the case of an external type battery (BM-DN100/SM-BMR1)

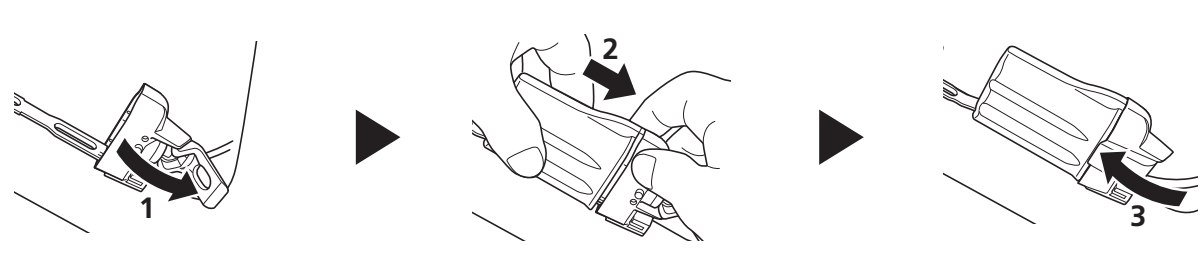
- Remove the battery from the battery mount. After about one minute, install the battery.

How to remove



Open the clamp, press the button, and pull the battery to remove it.

How to install



Open the clamp.

Install the battery aligned with the groove of the battery mount.

Close the clamp until it clicks into place.