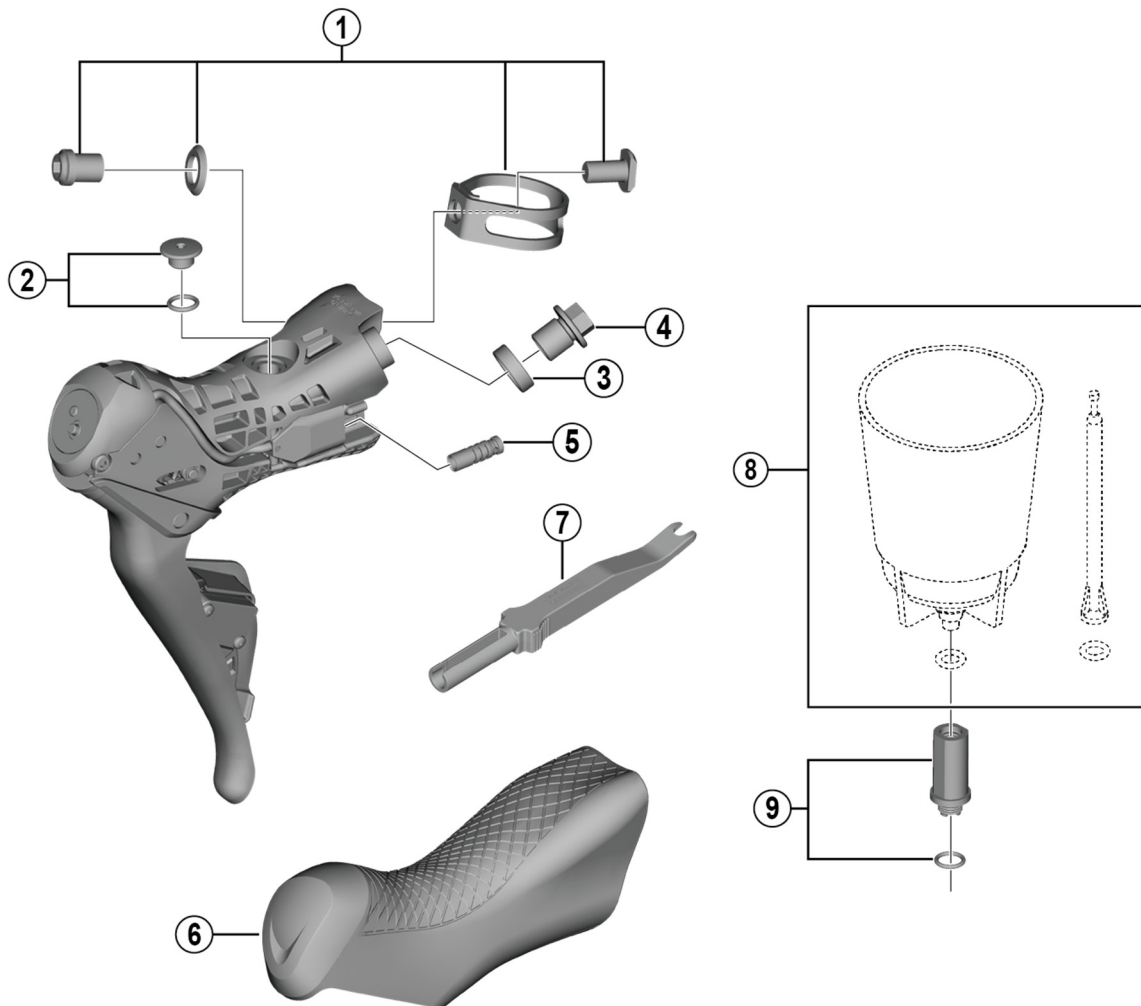


DURA-ACE Dual Control Lever (For Disc Brake)

ST-R9170 (2x11-speed)



ITEM NO.	SHIMANO CODE NO.	DESCRIPTION
1	Y63X98050	Clamp Band Unit (ø23.8 mm - ø24.2 mm)
2	Y0C698030	Bleed Screw & O-Ring
3	Y0C514000	Joint Support Ring
4	Y8RD01000	Flange Connecting Bolt (M9/Black)
5	Y6VE15000	Dummy Plug
6	Y0CA98010	Bracket Covers (Pair)
7	Y6VE16000	TL-EW02 Plug Tool
8	ESMDISCBP	Funnel & Oil Stopper
9	Y0C698050	Funnel Adapter & O-Ring

Jun.-2017-4079

© Shimano Inc. I

Specifications are subject to change without notice.

SHIMANO