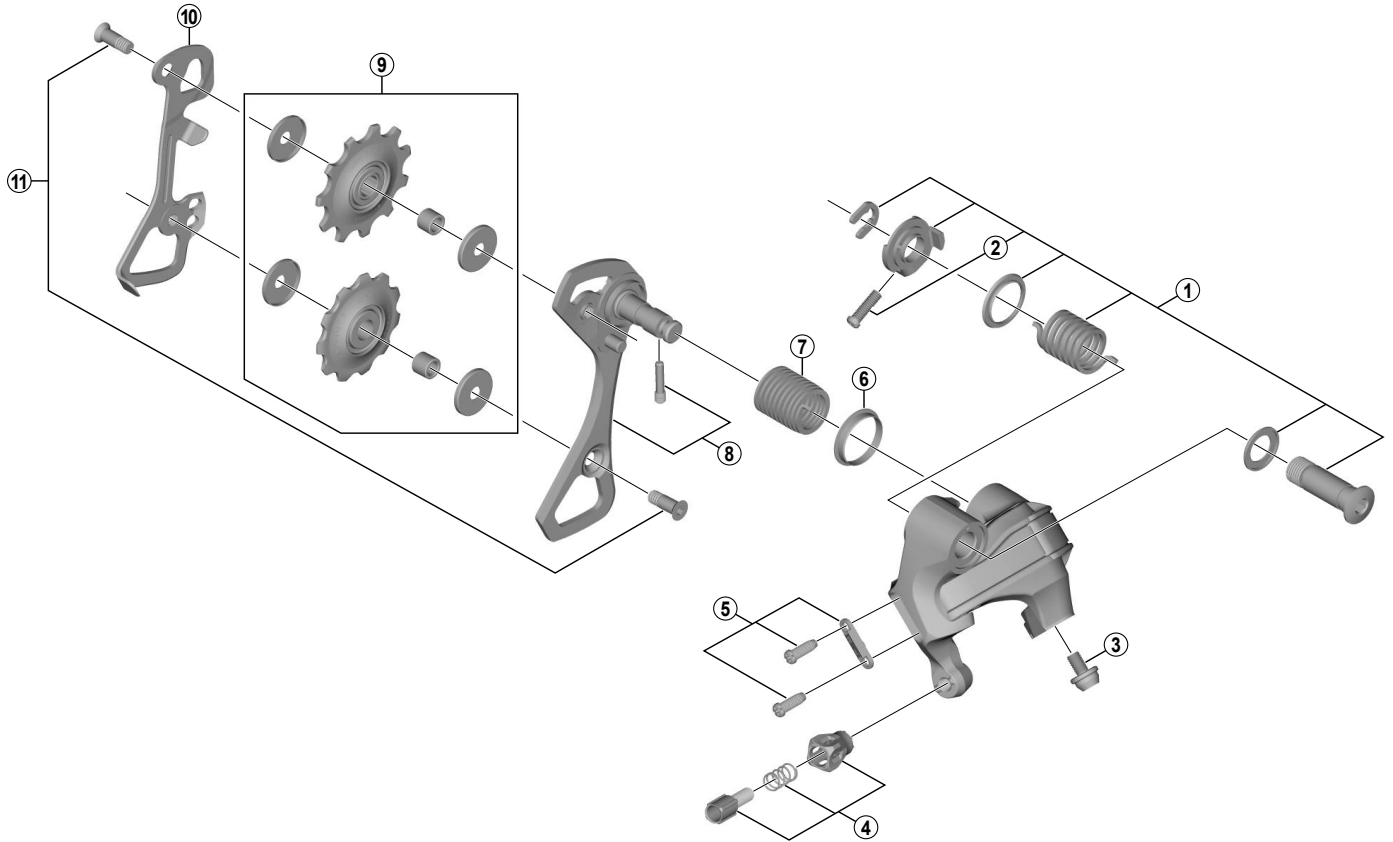


METREA Rear Derailleur RD-U5000-SS (11-speed)



ITEM NO.	SHIMANO CODE NO.	DESCRIPTION	INTERCHANGEABILITY			
			RD-4700-SS	RD-4700-CS	RD-5800-SS	RD-5800-CS
1	Y5YE98010	B-Axle Assembly			A	A
2	Y5YE18000	B-Tension Adjusting Screw (M4 x 13.5)	A	A	A	A
3	Y5RF98010	Cable Fixing Bolt w/Plate	A	A	B	B
4	Y5RF98020	Cable Adjusting Bolt Unit	A	A	A	A
5	Y5YC98040	Stroke Adjusting Screws (M4 x 11.5) & Plate	A	A	A	A
6	Y5UC14000	P-Seal Ring	A	A	A	A
7	Y5XV17000	P-Tension Spring	A	A	A	A
8	Y5RS98030	Outer Plate Assembly				
9	Y5RS98010	Tension & Guide Pulley Set				
10	Y5RS06000	Inner Plate				
11	Y5V598140	Pulley Bolt 12.5 mm (2 pcs.)	A	A		

A: Same parts.

B: Parts are usable, but differ in materials, appearance, finish, size, etc.

Absence of mark indicates non-interchangeability.

Specifications are subject to change without notice.

Feb.-2016-3968

© Shimano Inc. I

SHIMANO