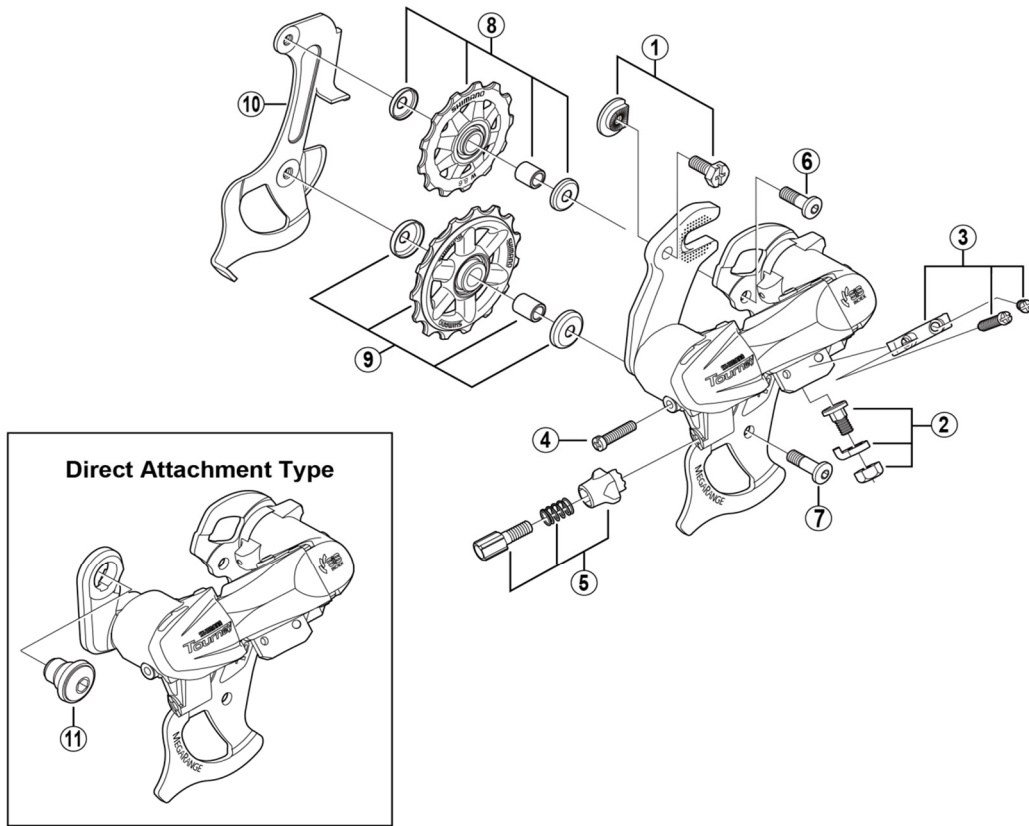


SHIMANO TOURNEY Rear Derailleur RD-TX31



ITEM NO.	SHIMANO CODE NO.	DESCRIPTION	RD-TX51		RD-TX30	
			INTERCHANGEABILITY			
1	Y54M98030	Adapter Screw (M5 x 11.5) & Nut	A	A		
2	Y5WG98010	Cable Fixing Bolt (M5 x 8.5) & Plate	A	A		
3	Y5V698010	Stroke Adjusting Screws (M4 x 15.3) & Plate	A	A		
4	Y5T822100	B-Tension Adjusting Screw (M4 x 17.5)			A	
5	Y5V898030	Cable Adjusting Bolt Unit	A	A		
* 6	Y5TW35010	Guide Pulley Bolt (M5 x 15.2)	A	A		
* 7	Y5TW35020	Tension Pulley Bolt (M5 x 17)	A	A		
8	Y5T498040	Guide Pulley Unit	A	A		
9	Y5WF98030	Tension Pulley Unit	A			
10	Y5V614000	Inner Plate	A			
11	Y54Z98080	B-Axle w/Spacer (Direct Attachment Type)	A	A		

A: Same parts.

B: Parts are usable, but differ in materials, appearance, finish, size, etc.

Absence of mark indicates non-interchangeability.

Specifications are subject to change without notice.

Oct.-2017-2753C

© Shimano Inc. I

SHIMANO