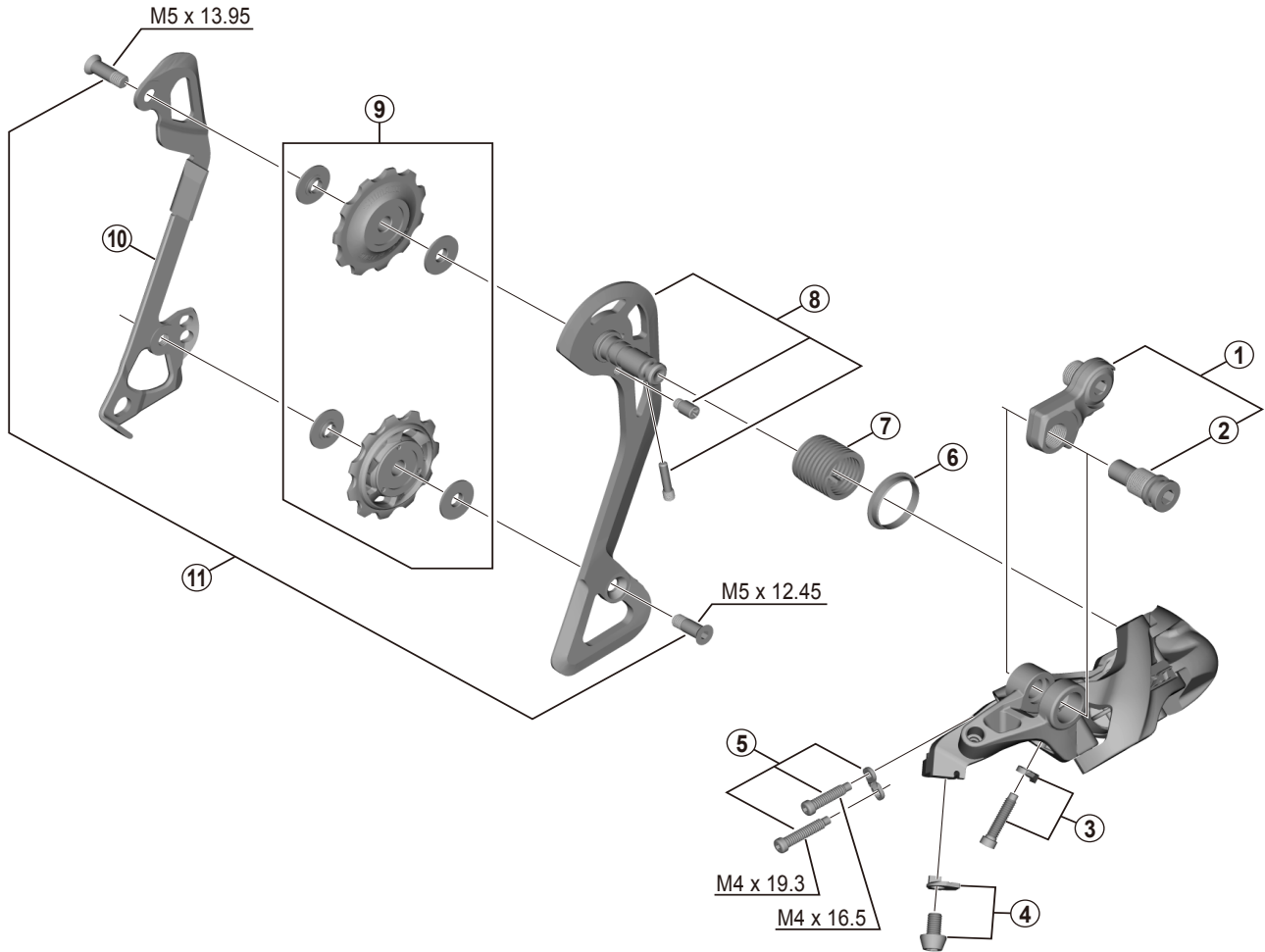


DEORE XT Rear Derailleur (10-speed)  
**RD-T8000** (SGS)



ITEM NO.	SHIMANO CODE NO.	DESCRIPTION	INTERCHANGEABILITY		
			RD-M8000	RD-T780	RD-M7000-10
1	Y5ZJ98010	Bracket Axle Unit (for normal type)	A		B
2	Y50Y17000	B-Axle (for Direct Mount type)			A
3	Y5ZJ98020	B-Tension Adjusting Screw (M4 x 18) & Plate			B
4	Y5ZJ98030	Cable Fixing Bolt (M5 x 8) & Plate			B
5	Y5ZH98040	Stroke Adjusting Screws & Plate			A
6	Y5UC14000	P-Seal Ring			
7	Y5W722000	P-Tension Spring			
8	Y5ZJ98040	Outer Plate Assembly			
9	Y5XF98130	Tension & Guide Pulley Set			
10	Y5ZJ26000	Inner Plate			
* 11	Y5X798040	Pulley Bolt (M5 x 12.45) & (M5 x13.95)			

A: Same parts.

B: Parts are usable, but differ in materials, appearance, finish, size, etc.

Absence of mark indicates non-interchangeability.

Specifications are subject to change without notice.

Apr.-2017-4014A

© Shimano Inc. I

**SHIMANO**