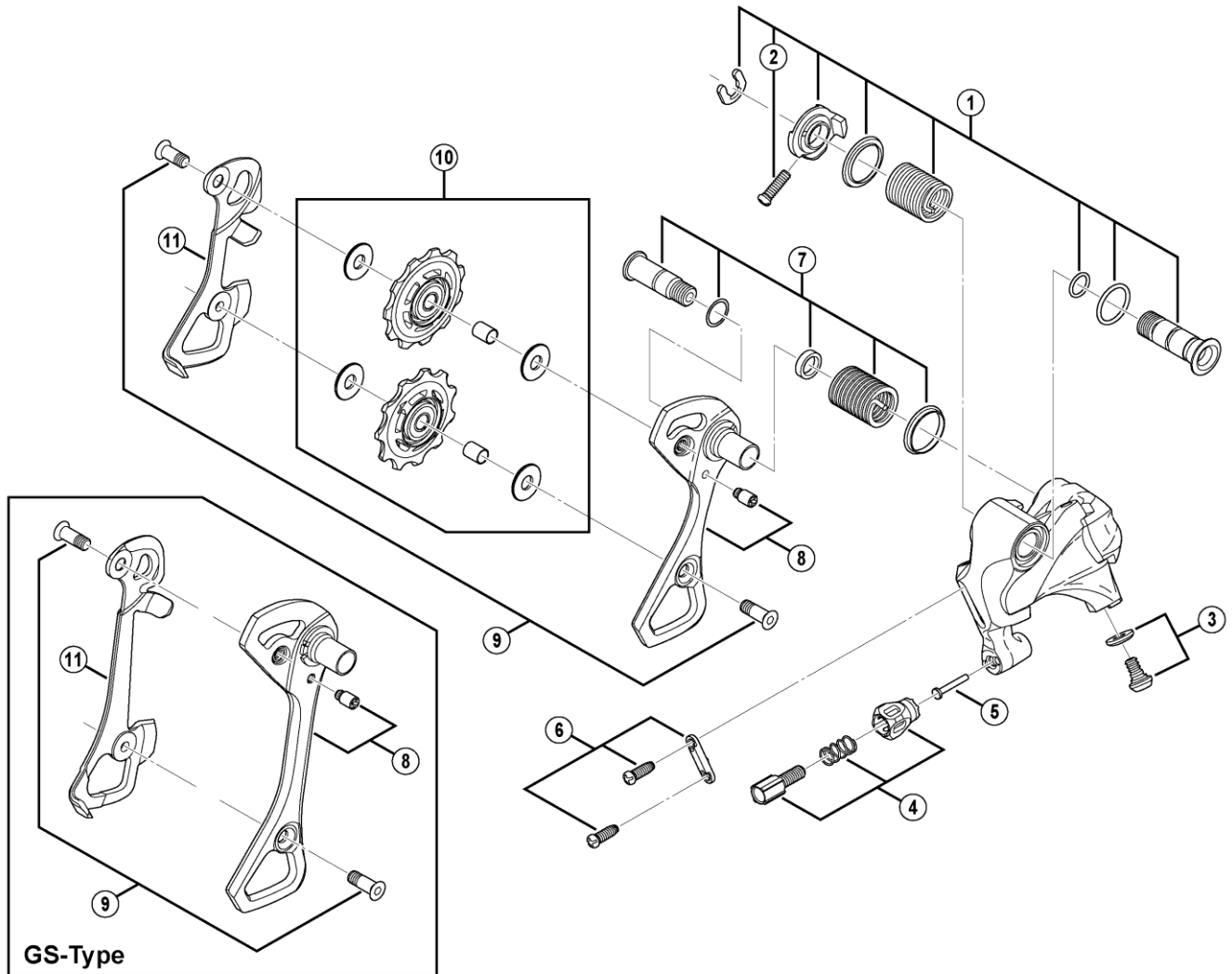


ULTEGRA Rear Derailleur (11-speed)

RD-6800 (SS/GS) Short Cage/Long Cage



RD-9000

ITEM NO.	SHIMANO CODE NO.	DESCRIPTION	INTERCHANGEABILITY	
1	Y5YC98010	B-Axle Assembly		
2	Y55625080	B-Tension Adjusting Screw (M4 x 13.5)	A	
3	Y5YC98020	Cable Fixing Bolt & Plate		
4	Y5YC98030	Cable Adjusting Bolt Unit	B	
5	Y5XX38000	Guard Pipe	A	
6	Y5YC98040	Stroke Adjusting Screws (M4 x 11.5) & Plate	B	
7	Y5YC98050	Plate Axle Assembly (SS-type)		
	Y5YC98060	Plate Axle Assembly (GS-type)		
8	Y5YC98070	Outer Plate & Plate Stopper Pin (SS-type)		
	Y5YC98080	Outer Plate & Plate Stopper Pin (GS-type)		
9	Y5X998070	Pulley Bolt 10.5mm & 12.5mm		
10	Y5YC98110	Tension & Guide Pulley Set		
* 11	Y5YC08000	Inner Plate (SS-type)		
	Y5YC25000	Inner Plate (GS-type)		

A: Same parts.

B: Parts are usable, but differ in materials, appearance, finish, size, etc.

Absence of mark indicates non-interchangeability.

Jan.-2015-3608B

© Shimano Inc. H

Specifications are subject to change without notice.

SHIMANO