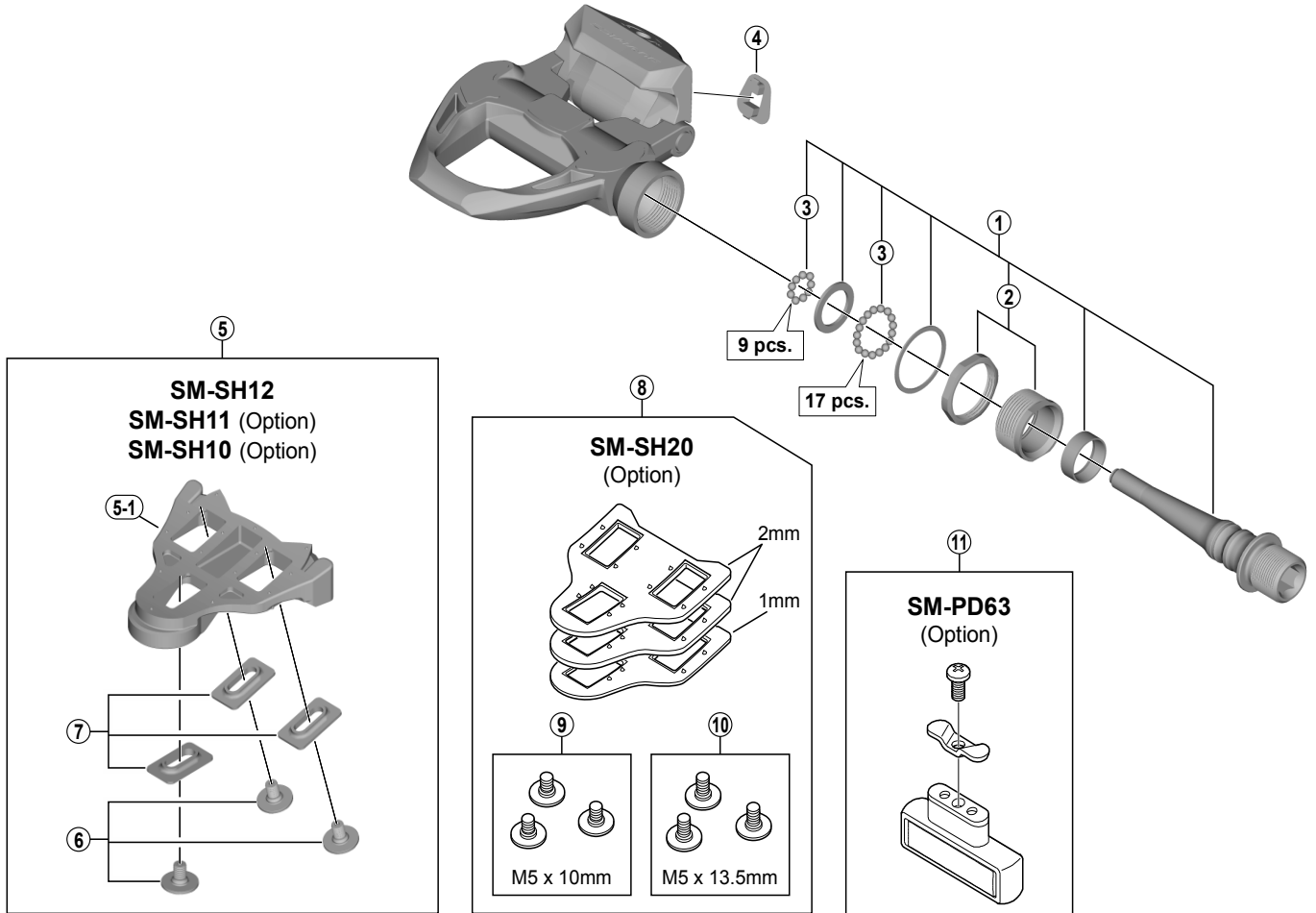


DURA-ACE SPD-SL Pedals  
**PD-R9100** (Standard / 4mm Longer Axle)



PD-9000

ITEM NO.	SHIMANO CODE NO.	DESCRIPTION	INTERCHANGEABILITY
1	YL8898010	Pedal Axle Assembly (Right / B.C.9/16" x 20T.P.I.)	
	YL8898020	Pedal Axle Assembly (Right / B.C.9/16" x 20T.P.I.) for 4mm Long Type	
	YL8898030	Pedal Axle Assembly (Left / B.C.9/16" x 20T.P.I.)	
	YL8898040	Pedal Axle Assembly (Left / B.C.9/16" x 20T.P.I.) for 4mm Long Type	
2	Y42X98060	Bolt & Lock Nut (Right)	A
	Y42X98070	Bolt & Lock Nut (Left)	A
3	Y41N98030	Steel Ball (3/32") 62 pcs.	A
4	Y42U10800	Indicator	A
5	Y40B98140	SM-SH12 Cleat Set (Front Center Pivot / Pair / Standard Type Bolt M5 x 8 mm)	A
	Y42U98010	SM-SH11 Cleat Set (Self-aligning mode / Pair / Option / Standard Type Bolt M5 x 8 mm)	A
	Y42U98020	SM-SH10 Cleat Set (Fixed mode / Pair / Option / Standard Type Bolt M5 x 8 mm)	A
6	YL8898050	Cleat Fixing Bolt (Lightweight type M5 x 8 mm / 6 pcs.)	B
7	YL8898060	Cleat Washer (Silver/6 pcs.)	A
8	Y40B98150	SM-SH20 Cleat Spacer Set (Option)	A
9	Y42U98070	Cleat Fixing Bolt (M5 x 10 mm) 6 pcs.	A
10	Y42U98060	Cleat Fixing Bolt (M5 x 13.5 mm) 6 pcs.	A
11	Y46J98010	SM-PD63 Reflector Unit (Pair/Option)	A
	Y46J98020	SM-PD63 Reflector Unit (AS/Pair/Option)	A

A: Same parts.

B: Parts are usable, but differ in materials, appearance, finish, size, etc.

Absence of mark indicates non-interchangeability.

Specifications are subject to change without notice.

Apr.-2016-4056

© Shimano Inc. I

**SHIMANO**