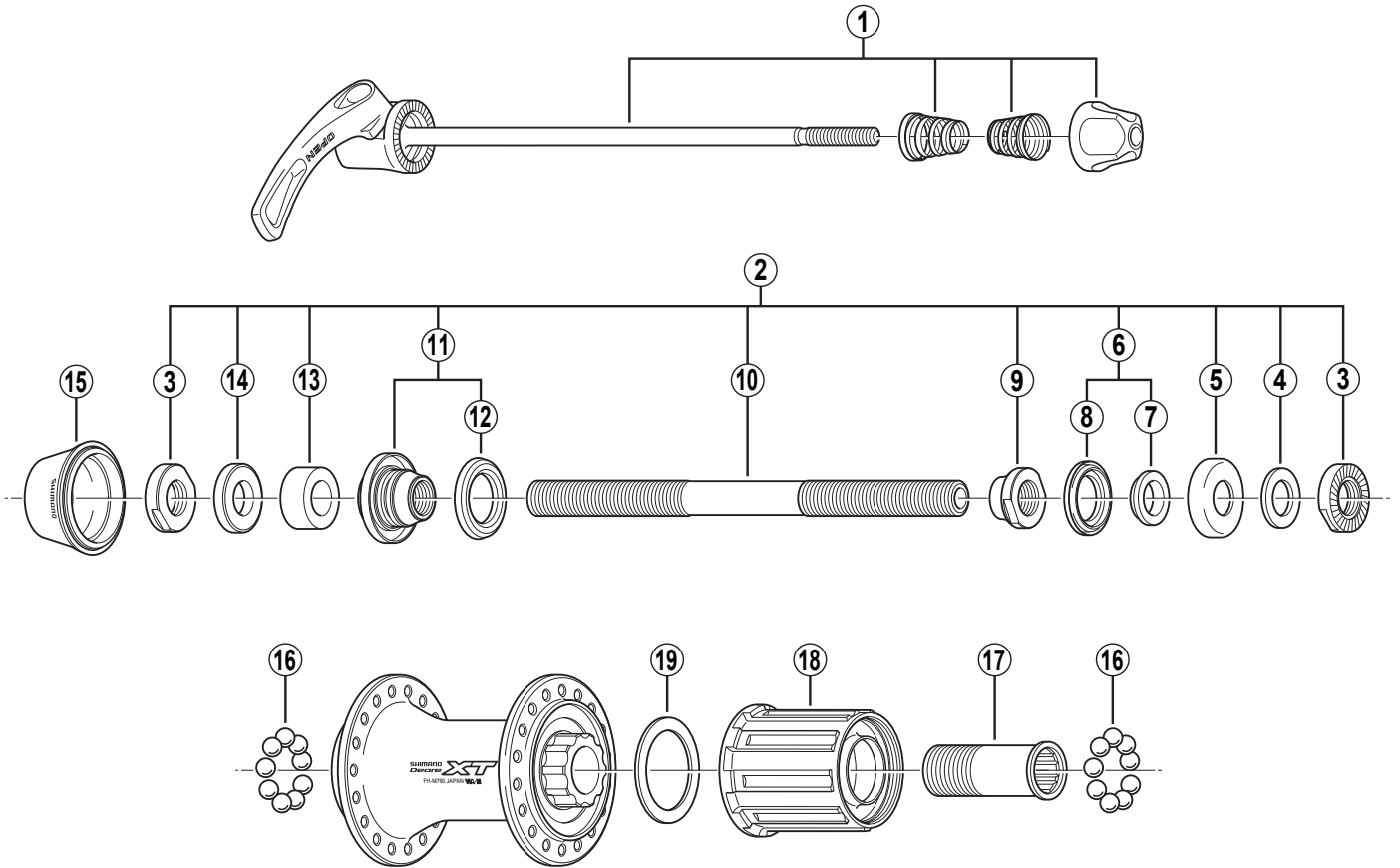


DEORE XT Freehub (9-Speed)

FH-M760-S Silver Version

FH-M760-L Black Version



• Use with CS-M760.

Q'TY	ITEM NO.	SHIMANO CODE NO.	DESCRIPTION
	1	Y-3C0 92000	Complete Quick Release 168 mm (6-5/8") for FH-M760-S
		Y-3C0 92200	Complete Quick Release 168 mm (6-5/8") for FH-M760-L
		Y-3C0 92100	Complete Quick Release 173 mm (6-13/16") for FH-M760-S
		Y-3C0 92300	Complete Quick Release 173 mm (6-13/16") for FH-M760-L
	2	Y-3C0 98020	Complete Hub Axle 146 mm (5-3/4")
	3	Y-32P 08000	Serrated Lock Nut 4 mm
	4	Y-301 07100	Right Hand Washer 1.5 mm
	5	Y-3A0 05100	Right Hand Dust Cap
	6	Y-32X 98020	Right Hand Axle Spacer & Seal Ring
	7	Y-31V 03000	Right Hand Axle Spacer 3.7 mm
	8	Y-214 06000	Right Hand Seal Ring
	9	Y-3AE 03100	Right Hand Cone M10 x 9 mm
	10	Y-360 19209	Hub Axle 146 mm (5-3/4")
	11	Y-3C0 98030	Left Hand Cone (M10 x 16 mm) w/Dust Cover & Seal Ring
	12	Y-377 10000	Left Hand Seal Ring
	13	Y-3BC 04000	Left Hand Axle Spacer 8 mm
	14	Y-3AC 08310	Left Hand Axle Spacer 3 mm
	15	Y-3AC 04000	Rubber Seal
	16	Y-000 91310	Steel Ball (1/4") 18 pcs.
	17	Y-3BL 03000	Body Fixing Bolt
	18	Y-3C0 98010	Complete Freewheel Body w/Right Hand Dust Cap
	19	Y-375 04000	Freewheel Body Washer

Over Lock Nut Dimension: 135 mm (5-5/16")