

# SHIMANO

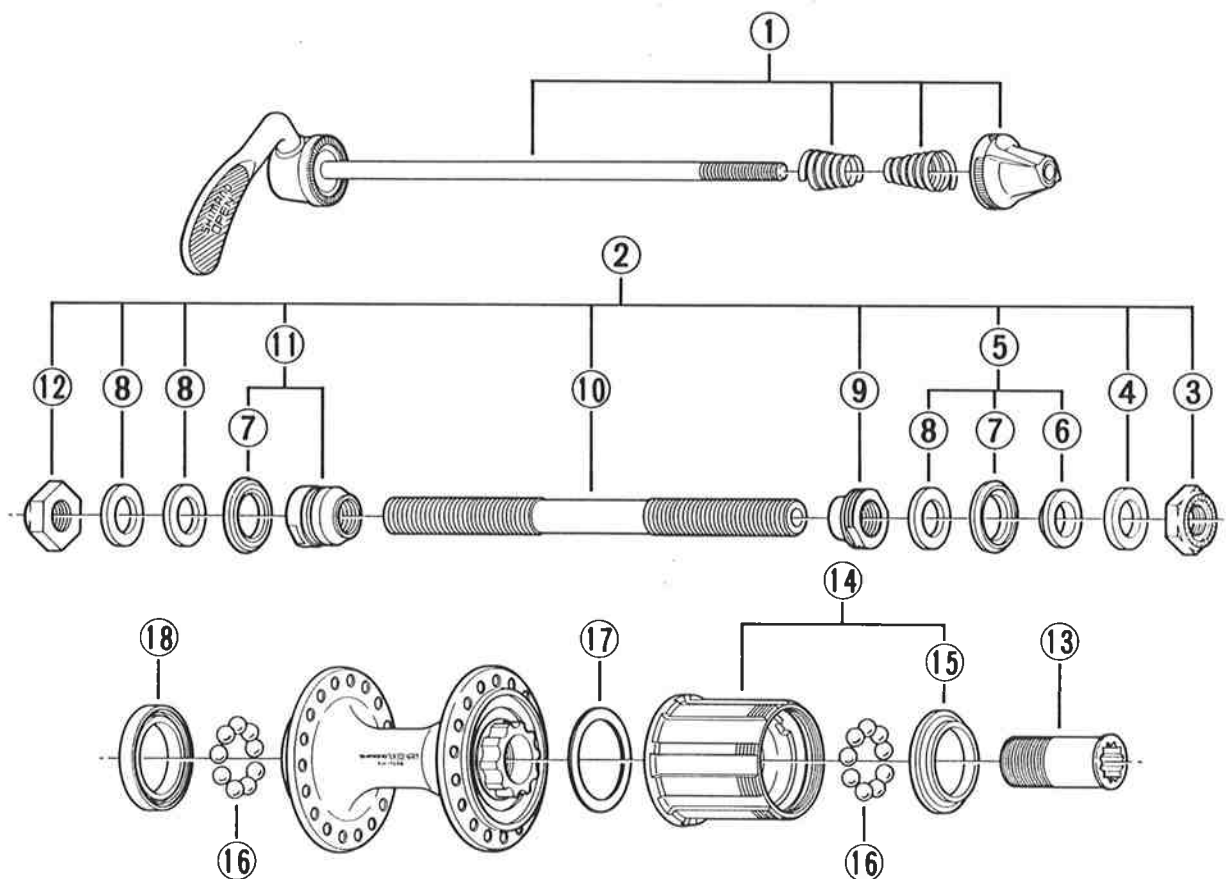
SHIMANO (EUROPA) GmbH.  
Kleinhülsen 1-3 4010 Hilden, Germany  
Tel. 02103-5005-0

SHIMANO AMERICAN CORPORATION  
One Shimano Drive, P.O. Box 19615, Irvine,  
California U.S.A. 92713-9615 Tel. (714) 951-5003

## Small parts list for after market.

- You may photocopy this sheet and use it as an order form.
- Sie können dieses Blatt kopieren und als Bestellformular verwenden.
- Vous pouvez photocopier cette feuille et l'utiliser comme bon de commande.
- Dit blad kan gecopieerd en als bestelformulier gebruikt worden.
- Potete fotocopiare questo foglio e usarlo come modulo di commissione.

### SHIMANO 105SC Freehub FH-1056-8 For 8-Speed



• Use with CS-HG70-8.

Over Lock Nut Dimension: 130mm(5-1/8")

Q'TY	ITEM NO.	PART NO.	DESCRIPTION
	1	31D 9804	Complete Quick Release 161mm(6-11/32")
	2	31D 9802	Complete Hub Axle 141mm(5-9/16")
	3	220 0502-1	Right Hand Lock Nut 3.5mm
	4	301 0610	Right Hand Washer 2.3mm
	5	31D 9803	Right Hand Axle Spacer Unit 5.9mm
	6	31B 0400	Right Hand Axle Spacer 4mm
	7	377 1000	Seal Ring
	8	301 0630	Washer 1.9mm
	* 9	369 0400	Right Hand Cone M10 x 9mm
	10	301 0510	Hub Axle 141mm(5-9/16")
	11	377 9807	Left Hand Cone (M10 x 15.5mm) & Seal Ring
	12	220 0501-1	Left Hand Lock Nut 4.5mm
	13	359 0400	Freewheel Body Fixing Bolt
	14	31D 9801	Complete Freewheel Body w/Right Hand Dust Cap
	15	32E 0300	Right Hand Dust Cap
	16	000 9131	Steel Ball (1/4") 18 pcs.
	17	375 0400	Freewheel Body Washer
	18	31B 9801	Left Hand Dust Cap