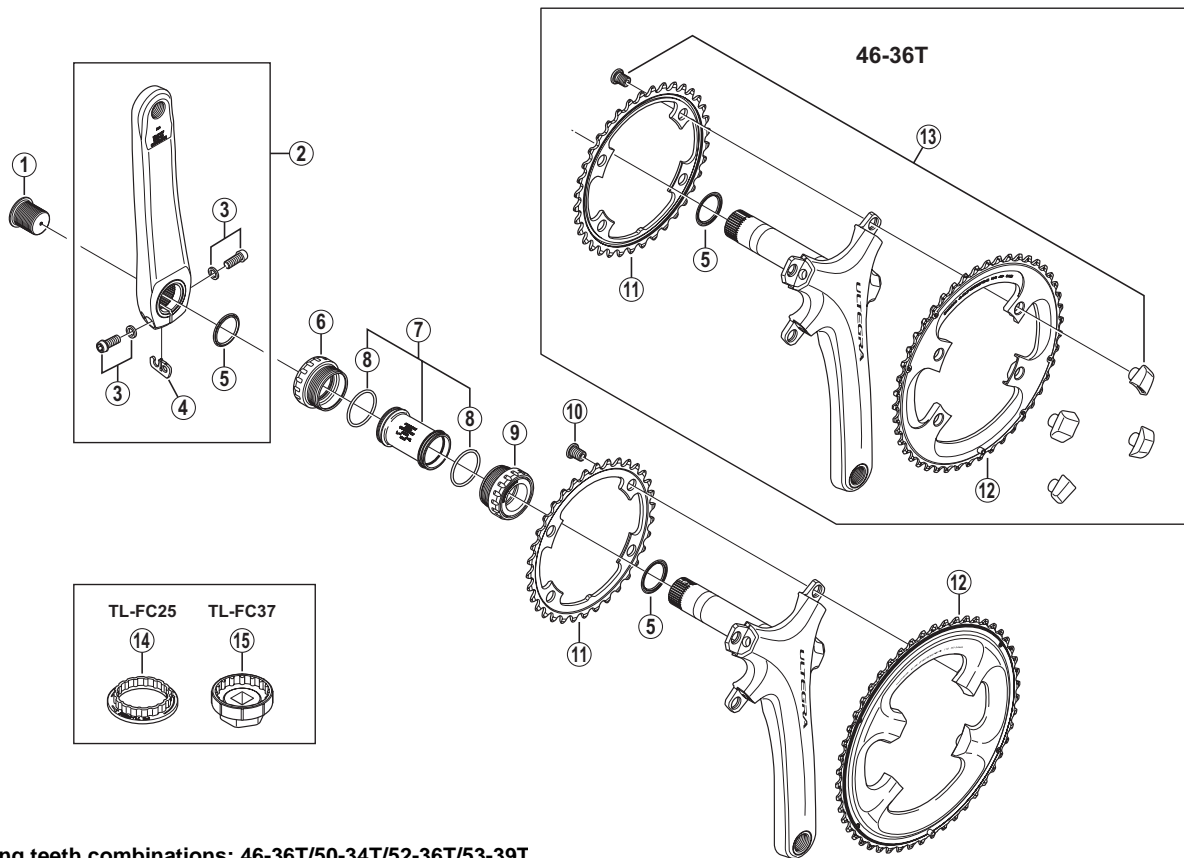


# ULTEGRA Front Chainwheel FC-6800



- Chaining teeth combinations: 46-36T/50-34T/52-36T/53-39T
- Bolt circle diameter: 110 mm

FC-9000

ITEM NO.	SHIMANO CODE NO.	DESCRIPTION	INTERCHANGEABILITY
1	Y1P417000	Crank Arm Fixing Bolt	
2	Y1P498010	Left Hand Crank Arm 165 mm	B
	Y1P498020	Left Hand Crank Arm 170 mm	B
	Y1P498030	Left Hand Crank Arm 172.5 mm	B
	Y1P498040	Left Hand Crank Arm 175 mm	B
3	Y1G398010	Clamp Bolt (M6 x 19) & Washer	
4	Y1GE98050	Plate	B
5	Y1F316000	Ring	A
6	Y1P598010	Left Hand Adapter (B.C.1.37" x 24T) English Thread (SM-BBR60)	B
	Y1P598020	Left Hand Adapter (M36 x 24T) Italian Thread (SM-BBR60)	B
7	Y1G398150	Inner Cover & O-Ring	B
8	Y1TF21000	O-Ring	A
9	Y1P598030	Right Hand Adapter (B.C.1.37" x 24T) English Thread (SM-BBR60)	B
	Y1P598040	Right Hand Adapter (M36 x 24T) Italian Thread (SM-BBR60)	B
10	Y1H598160	Gear Fixing Bolt (M8 x 10.1 / 4 pcs.)	A
* 11	Y1P434000	Chainring 34T-MA for 50-34T	B
	Y1P436000	Chainring 36T-MB for 46-36T/52-36T	B
	Y1P439000	Chainring 39T-MD for 53-39T	B
* 12	Y1P498050	Chainring 46T-MB for 46-36T	
	Y1P498060	Chainring 50T-MA for 50-34T	B
	Y1P498070	Chainring 52T-MB for 52-36T	B
	Y1P498080	Chainring 53T-MD for 53-39T	B
* 13	Y1P498090	46-36T Gear Fixing Bolt (M8 x 10.1) & Nut (4 sets)	
14	Y13009260	TL-FC25 Adapter Installation Tool	
15	Y13009270	TL-FC37 Adapter Installation Tool	

A: Same parts.

B: Parts are usable, but differ in materials, appearance, finish, size, etc.  
Absence of mark indicates non-interchangeability.

Aug.-2013-3609A  
© Shimano Inc. I

Specifications are subject to change without notice.

# SHIMANO