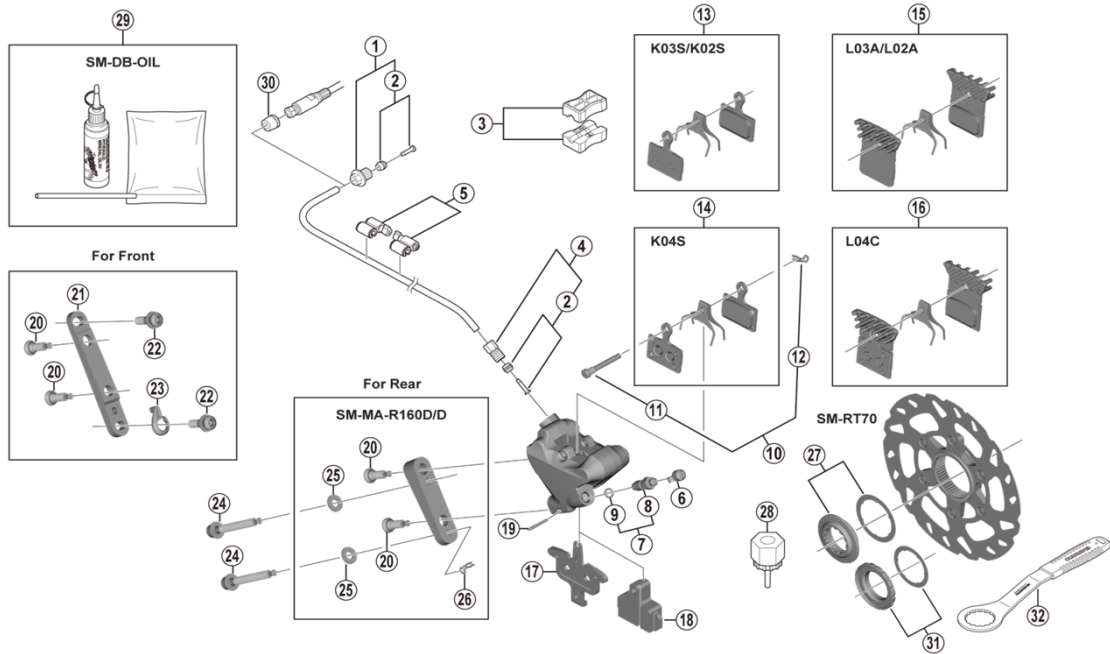


**SHIMANO 105 Disc Brake**  
**BR-R7070** Brake Caliper  
**SM-RT70** Disc Rotor

**SM-BH90-JK-SSR** Brake Hose  
**SM-BH90-JK-SS** Brake Hose



ITEM NO.	SHIMANO CODE NO.	DESCRIPTION
1	Y8RD98010	Flange Connecting Bolt Unit (M9/Black)
2	Y8JA98020	Olive & Connector Insert
3	Y8H198030	TL-BH61 Shimano original tool (2 pcs.)
4	Y8JA98010	Connecting Bolt Unit (M8/Black)
5	Y83098040	SM-HANG Hose Supporter A & B
6	Y8B214000	Bleed Nipple Cap
7	Y8CL98050	Bleed Nipple & Seal Ring
8	Y8CL24200	Bleed Nipple
9	Y8B511001	O-Ring for Bleed Nipple
10	Y8J798060	Pad Axle & Snap Retainer
11	Y8J710000	Pad Axle
12	Y8J716000	Snap Retainer
13	Y8Y898010	Resin Pad (K03S) & Spring
	Y8N398010	Resin Pad (K02S) & Spring
14	Y8N398020	Metal Pad (K04S) & Spring
15	Y8PU98040	Resin Pad (L03A) w/Fin & Spring
	Y8N398030	Resin Pad (L02A) w/Fin & Spring
16	Y8N398040	Metal Pad (L04C) w/Fin & Spring
17	Y8N218000	Pad Spacer
18	Y8N219000	Bleeding Spacer
19	Y8N207000	Bolt Fixing Pin
20	Y8N206000	Caliper Fixing Bolt B
21	Y8N230000	Front Caliper Mount Bracket
22	Y8N204000	Caliper Fixing Bolt A
23	Y8N205000	Snap Ring
	Y8N208000	Caliper Fixing Bolt C for 10 mm Rear mount thickness
	Y8N208050	Caliper Fixing Bolt C for 15 mm Rear mount thickness
24	Y8N208010	Caliper Fixing Bolt C for 20 mm Rear mount thickness
	Y8N208020	Caliper Fixing Bolt C for 25 mm Rear mount thickness
	Y8N208030	Caliper Fixing Bolt C for 30 mm Rear mount thickness
	Y8N208040	Caliper Fixing Bolt C for 35 mm Rear mount thickness
25	Y8NU02000	Washer for R160 Adapter
26	Y8NU03000	Snap Retainer
27	Y8P898010	Lock Ring & Washer
28	Y12009230	TL-LR15 Lock Ring Removal Tool
29	Y83998010	Mineral Oil Bleed Kit (50 ml)
30	Y8H802000	Hose Cover for easy hose joint system, not used with easy hose joint direct system
* 31	Y26L98030	Lock Ring & Washer (Externally serrated type)
* 32	Y13098000	TL-FC36 Lock Ring Removal Tool