

Dealer's Manual

ROAD	GRAVEL	MTB
E-BIKE	LIFESTYLE	GENERAL

Crankset (Inspection Method)

DURA-ACE

FC-R9100
FC-R9100-P
FC-9000

ULTEGRA

FC-R8000
FC-6800

Contents

IMPORTANT NOTICE	3
TO ENSURE SAFETY	4
Model number for inspection	5
Checking the model number and production code	6
Overview.....	6
Location of model number and production code.....	6
Model number for inspection	7
Production code for inspection.....	7
Inspection with the crank arm installed	8
Exterior inspection	8
Abnormal noise inspection.....	9
Cleaning	10
Preparing the cleaning supplies.....	10
Cleaning method	11
Inspecting for issues	21
Introduction	21
Right crank arm.....	21
Left crank arm	22
Example issues	24
Right crank arm.....	24
Left crank arm	27




IMPORTANT NOTICE

- This dealer's manual is intended primarily for use by professional bicycle mechanics.
Users who are not professionally trained for bicycle assembly should not attempt procedures themselves using the dealer's manuals.
If any part of the information on the manual is unclear to you, do not proceed with the installation. Instead, contact your place of purchase or a distributor for assistance.
- Do not disassemble the product other than as stated in the information contained in this dealer's manual.
- All manuals and technical documents are accessible online at <https://si.shimano.com> .

For safety, be sure to read this dealer's manual thoroughly before use, and follow it for correct use.

The following instructions must be observed at all times in order to prevent personal injury and physical damage to equipment and surroundings.

The instructions are classified according to the degree of danger or damage which may occur if the product is used incorrectly.


 DANGER	Failure to follow the instructions will result in death or serious injury.
 WARNING	Failure to follow the instructions could result in death or serious injury.
 CAUTION	Failure to follow the instructions could cause personal injury or physical damage to equipment and surroundings.

TO ENSURE SAFETY

DANGER

- Do not get the charging cable wet and do not touch or hold it while it is wet or with wet hands. If this is not observed, issues with operation or electric shocks may occur.
- Do not touch the metal terminals with metal items such as hairpins. If this is not observed, short-circuits, overheating, burns or other injuries may occur.
- If any liquid leaking from the battery gets into the eyes, immediately wash the affected area with clean water without rubbing the eyes, then seek medical attention. If this is not done, blindness may occur.
- Do not allow the battery terminals to get wet. If this is not observed, fire, bursting, ignition, or overheating may occur.

WARNING

-  Wear approved eye protection while performing procedures.
- If any leaked fluid gets on your skin or clothes, wash it off immediately with clean water. The leaked fluid may damage your skin.

CAUTION

- Be careful not to touch the teeth of the chainrings. Otherwise, you may be injured.
- Do not perform procedures with the charging cable connected.

Model number for inspection

The following crankset models are subject to inspection in this manual.

FC-R9100



FC-R8000



FC-R9100-P



FC-6800



FC-9000



- All crank lengths and chainring combinations are subject to inspection in this manual.
- The left crank of the FC-R8000 and FC-6800 are not subject to inspection in this manual.

Checking the model number and production code

Overview

Perform cleaning and inspection if the model number and production code of the crankset match one of the target crankset models.

Location of model number and production code

Before removing the crankset from the bicycle, confirm that the model number and production code match one of the target crankset models.

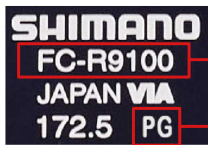


Model number

Production code

Checking the model number and production code

Model number for inspection



Model number

Production code

Model number for inspection

FC-R9100

FC-R9100-P

FC-9000

FC-R8000

FC-6800

Production code for inspection



	A	B	C	D	E	F	G	H	I	J	K	L
K						KF	KG	KH	KI	KJ	KK	KL
L	LA	LB	LC	LD	LE	LF	LG	LH	LI	LJ	LK	LL
M	MA	MB	MC	MD	ME	MF	MG	MH	MI	MJ	MK	ML
N	NA	NB	NC	ND	NE	NF	NG	NH	NI	NJ	NK	NL
O	OA	OB	OC	OD	OE	OF	OG	OH	OI	OJ	OK	OL
P	PA	PB	PC	PD	PE	PF	PG	PH	PI	PJ	PK	PL
Q	QA	QB	QC	QD	QE	QF	QG	QH	QI	QJ	QK	QL
R	RA	RB	RC	RD	RE	RF						

Inspection with the crank arm installed

Exterior inspection

Before removing the crankset from the bicycle, inspect the area around the crank arm.

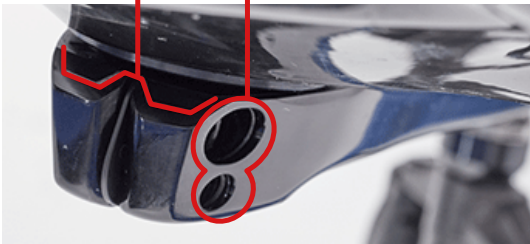
- Right crank arm

Inspect for issues such as cracking or steps, focusing on the areas indicated in red in the figures below.



- Left crank arm

Inspect for issues such as cracking or steps, focusing on the areas indicated in red in the figures below.



For example issues, refer to " Example issues ."

Abnormal noise inspection



If there is an issue with the crankset, it may emit an abnormal noise.



Cleaning

Preparing the cleaning supplies

Prepare the following tools and neutral detergent.

- Bucket



- Sponge/brush



- Neutral detergent



NOTICE

- Prepare a brush or sponge made of a soft material such as plastic.



- Do not use hard materials such as metal scrubbing brushes.



- Do not use alkaline or acidic detergent or part cleaners.



Alkaline or acidic detergent



Part cleaner

Cleaning method

1. Remove the crankset from the bicycle.

For information on removing the crankset, refer to the dealer's manual for the crankset .

Cleaning

Cleaning method

2. Remove the chainrings.

For information on removing the chainrings, refer to the dealer's manual for the crankset .

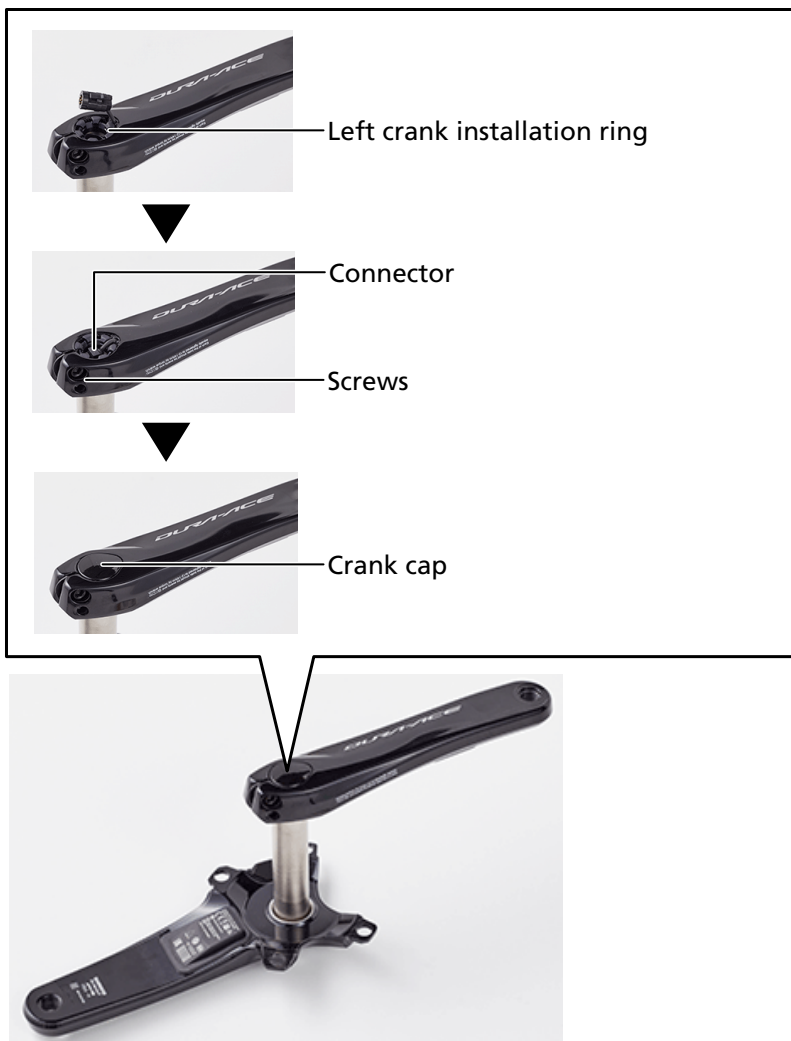


NOTICE

For the FC-R9100-P (Dual-sided power meter)

- After removing the left crank arm and right crank arm from the bicycle, install the left crank arm to the axle of the right crank arm.

Install the left crank installation ring, and insert the connector. Then, lightly tighten the two screws of the left crank arm so that they will not come off while cleaning, and correctly install the crank cap.



- For information on installing the crankset, refer to the dealer's manual for the dual-sided power meter .
- For information on removing the chainrings, refer to the dealer's manual for the dual-sided power meter .

Cleaning

Cleaning method

3. Roughly clean off the dirt.



NOTICE

For the FC-R9100-P (Dual-sided power meter)

- Do not immerse the area around the connector in solvents. Doing so may cause power meter failure.



- Do not scrub the area around the connector too hard with a brush.



Cleaning

Cleaning method

4. Clean the detailed areas.

Focus cleaning on the areas indicated in red in the figures below.

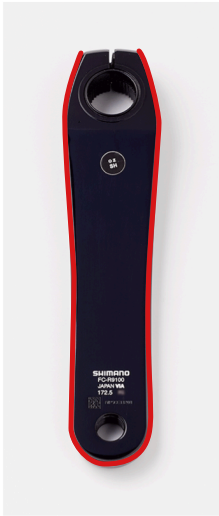
- Right crank arm



Cleaning

Cleaning method

- Left crank arm



TECH TIPS

- Cleaning can be performed more thoroughly by using a small brush.



Before cleaning

After cleaning



5. Wipe off any moisture.

- Use a clean rag or similar object.



- Because detergent is prone to collect inside the axle, make sure to rinse the axle carefully with water, then dry it well.



NOTICE

For the FC-R9100-P (Dual-sided power meter)

- In addition to wiping off the moisture, use compressed air, etc. to sufficiently remove the moisture.
- Remove the crank cap, then loosen the two screws of the left crank arm. Then, correctly remove the connector and the left crank installation ring, and remove the left crank arm.



Crank cap



Screws

Connector



Left crank installation ring

- For information on removing the crankset, refer to the dealer's manual for the dual-sided power meter .

Inspecting for issues

Introduction

If issues such as cracking or steps are found in the crank arm, immediately stop use and replace the target product.

If no issues are found, refer to the dealer's manual for the crankset to reinstall the chainrings and crankset.

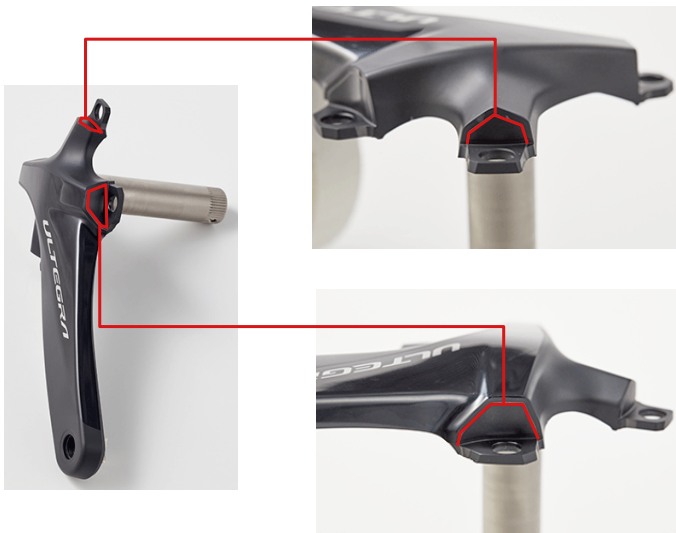
Right crank arm

Inspect for issues such as cracking or steps, focusing on the areas indicated in red in the figures below.



Inspecting for issues

Left crank arm



Left crank arm

Inspect for issues such as cracking or steps, focusing on the areas indicated in red in the figures below.



Inspecting for issues

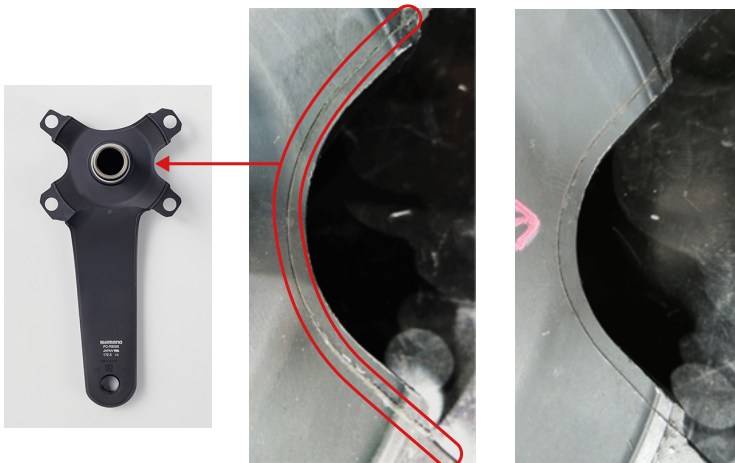
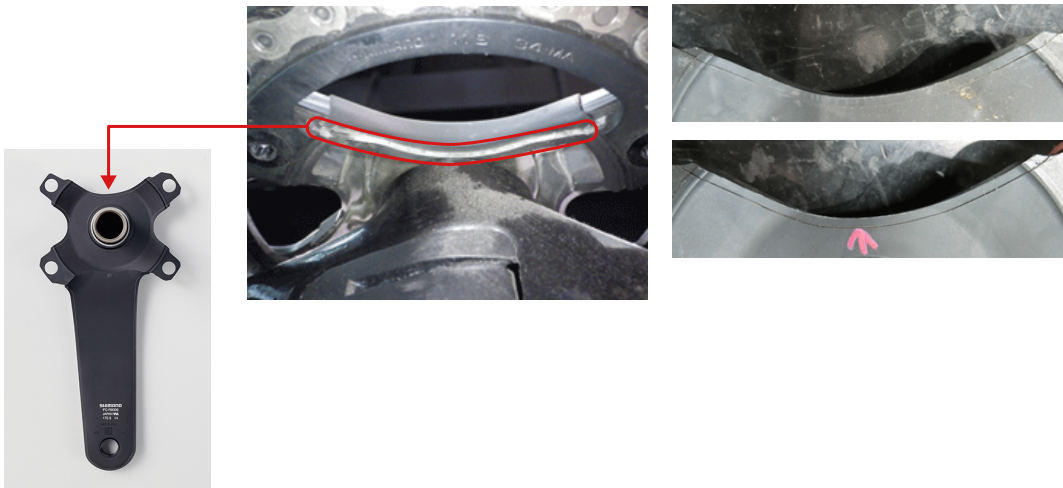
Left crank arm



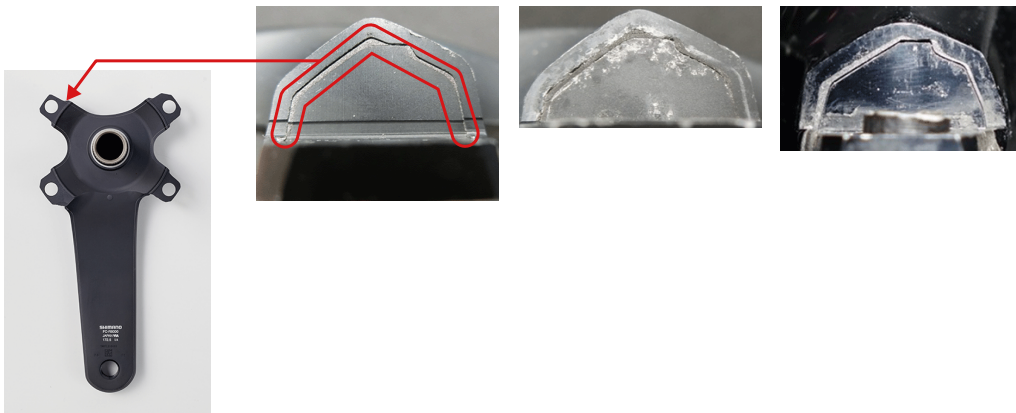
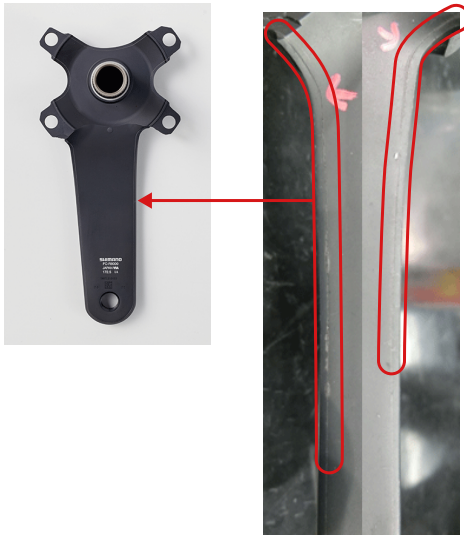
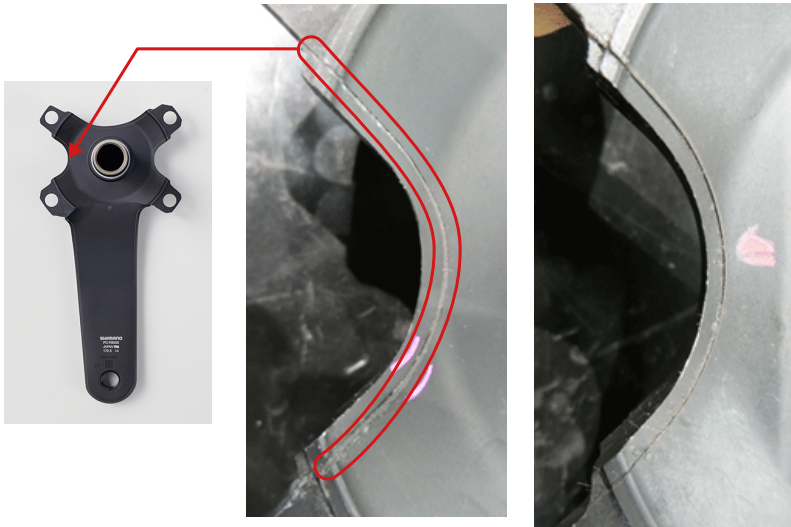
Inspect the area around the screws on both sides of the left crank arm.

Example issues

Right crank arm

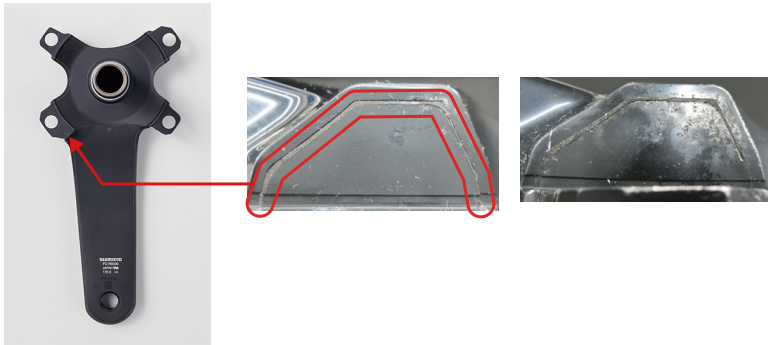
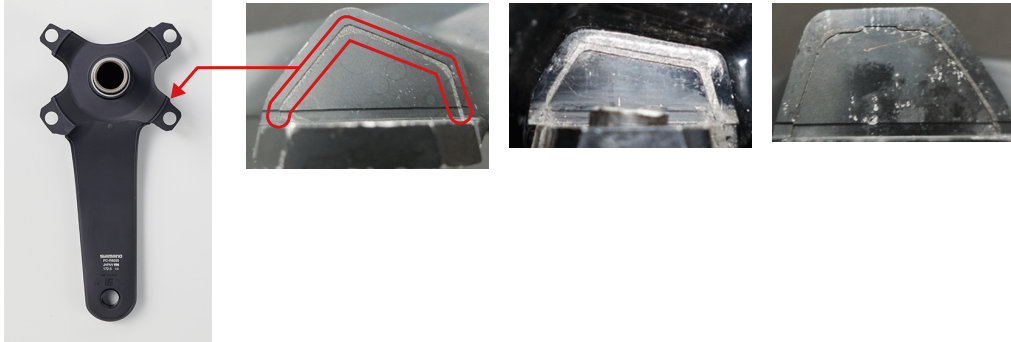
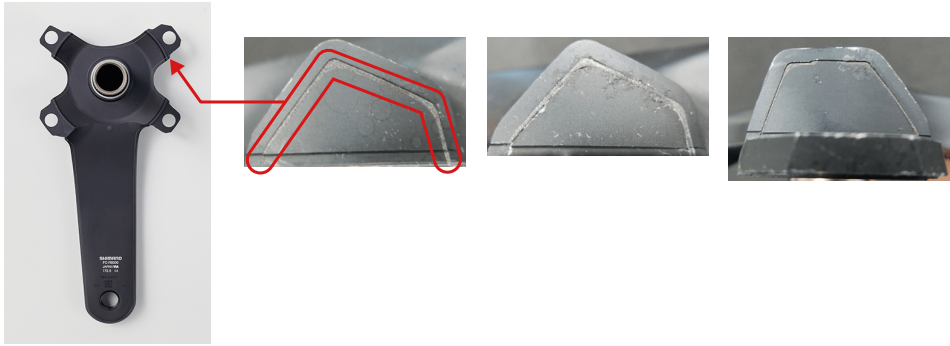


Example issues
Right crank arm



Example issues

Right crank arm

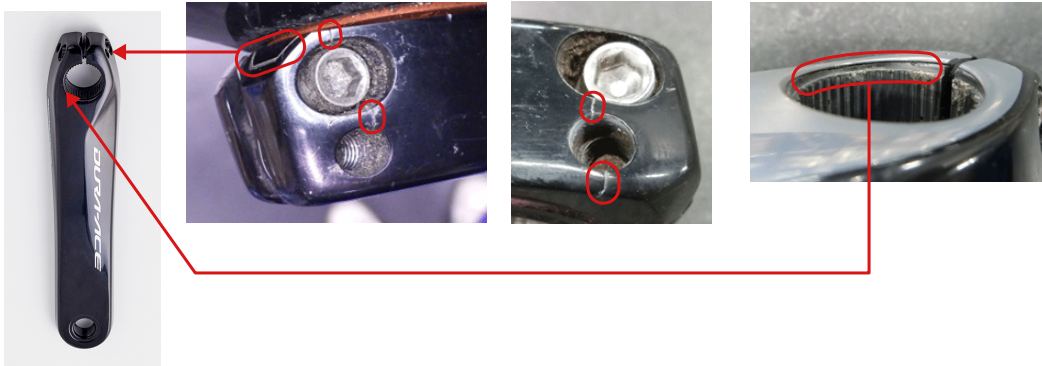
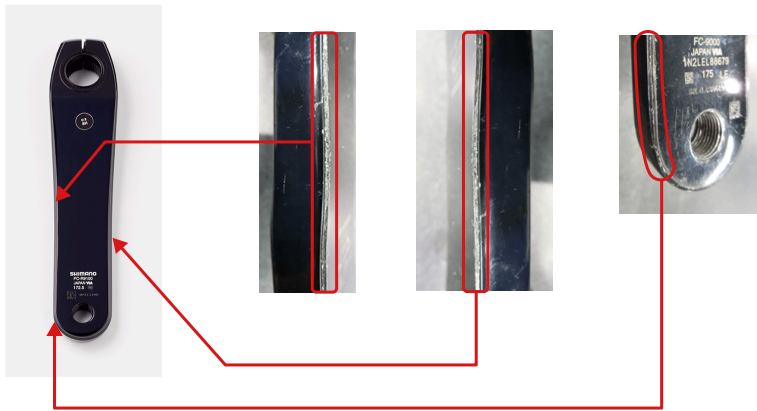


Example issues

Left crank arm



Left crank arm



SHIMANO

SHIMANO NORTH AMERICA BICYCLE, INC.
One Holland, Irvine, California 92618, U.S.A. Phone: +1-949-951-5003

SHIMANO EUROPE B.V.
High Tech Campus 92, 5656 AG Eindhoven, The Netherlands Phone: +31-402-612222

SHIMANO INC.
3-77 Oimatsu-cho, Sakai-ku, Sakai City, Osaka 590-8577, Japan

Please note: specifications are subject to change for improvement without notice. (English)
© Sep. 2023 by SHIMANO INC. ITP