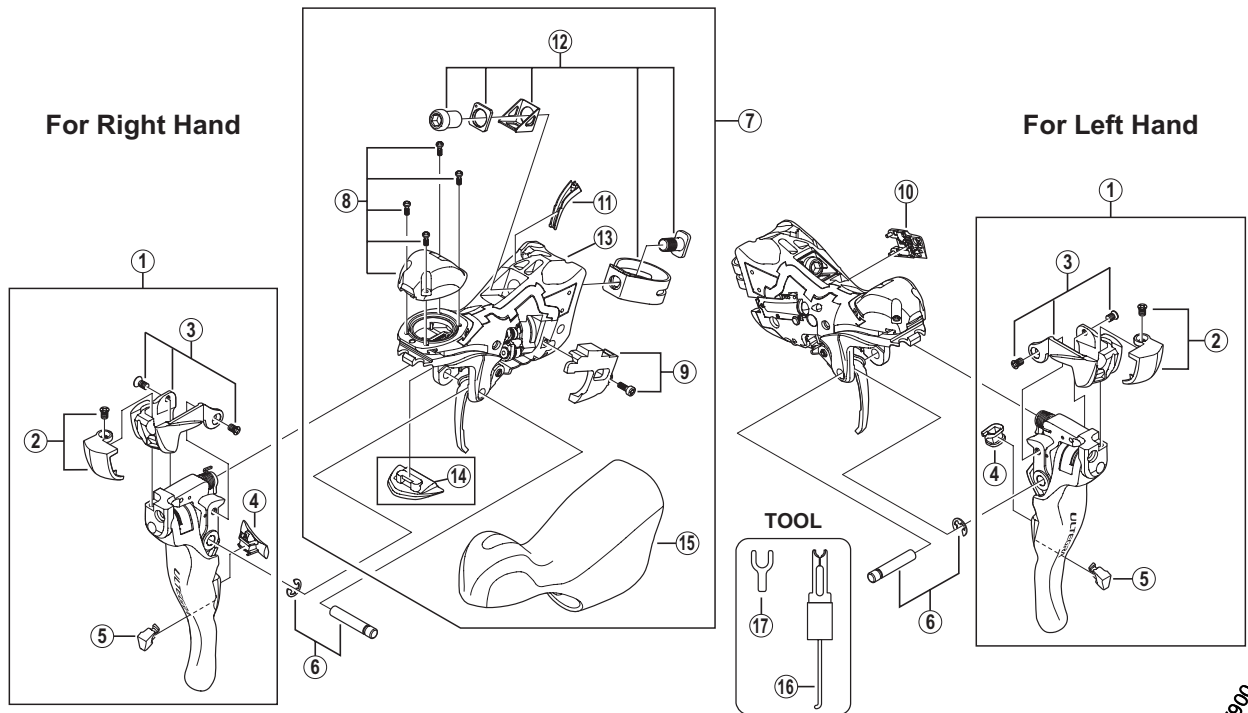


# ULTEGRA Dual Control Lever

## ST-6700 FLIGHT DECK Compatible



ST-7900

ITEM NO.	SHIMANO CODE NO.	DESCRIPTION	INTERCHANGEABILITY
1	Y6SC98010	R.H. Main Lever Assembly	
	Y6SC98020	L.H. Main Lever Assembly	
2	Y6SC98030	R.H. Name Plate A & Fixing Screw	
	Y6SC98040	L.H. Name Plate A & Fixing Screw	
3	Y6SC98050	R.H. Name Plate B & Fixing Screws	
	Y6SC98060	L.H. Name Plate B & Fixing Screws	
4	Y6SC20000	R.H. Main Lever Support	
	Y6SD70000	L.H. Main Lever Support	
5	Y6RT37010	R.H. Release Lever Support	A
	Y6RU87010	L.H. Release Lever Support	A
6	Y6SC98070	Lever Axle & E-ring	
7	Y6SC98190	R.H. Shifting Lever Unit (Bracket Cover: Black)	
	Y6SC98200	L.H. Shifting Lever Unit (Bracket Cover: Black)	
8	Y6SC98100	R.H. Top Cover Unitless & Fixing Screws	
	Y6SC98110	L.H. Top Cover Unitless & Fixing Screws	
9	Y6SC98210	Unit Cover & Fixing Screw	
10	Y6RU54000	SL Cable Cover	A
11	Y6RT46000	R.H. SL Cable Guide	A
	Y6SD66000	L.H. SL Cable Guide	
12	Y6SC98150	Clamp Band Unit (ø23.8 mm - ø24.2 mm)	
13	Y6SC98220	R.H. Bracket	
	Y6SC98230	L.H. Bracket	
14	Y6SC76000	R.H. Adjustment Block (5 mm)	
	Y6SC76010	L.H. Adjustmen Block (5 mm)	
	Y6SC75000	R.H. Adjustment Block (10 mm)	
	Y6SC75010	L.H. Adjustmen Block (10 mm)	
* 15	Y6SC98180	Bracket Covers (Black/Pair)	
	Y6SC98240	Bracket Covers (White/Pair)	
16	Y6RT68000	Tool A for E-ring	A
17	Y6RT66000	Tool B for E-ring	A

A: Same parts.

B: Parts are usable, but differ in materials, appearance, finish, size, etc.

Absence of mark indicates non-interchangeability.

Apr.-2012-2936B

© Shimano Inc. I

Specifications are subject to change without notice.

# SHIMANO