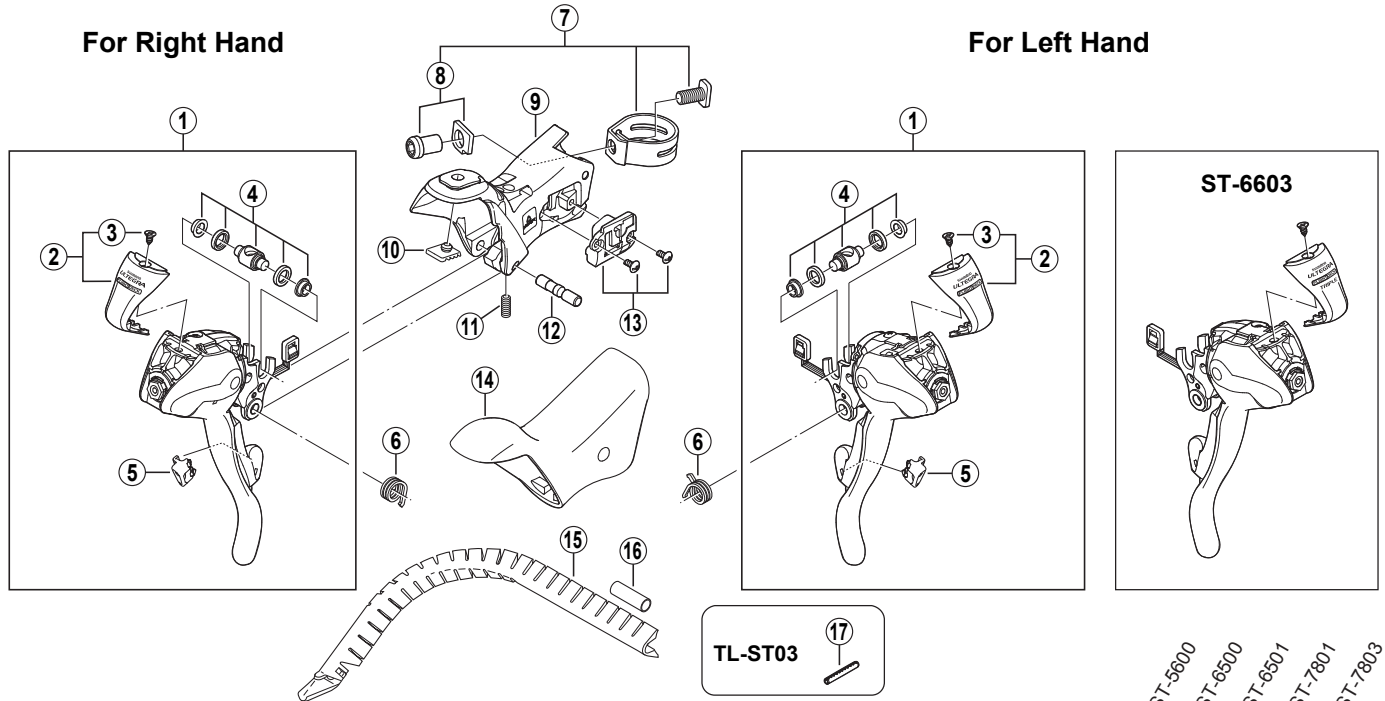


SHIMANO ULTEGRA Dual Control Lever (FLIGHT DECK Compatible)

**ST-6600**    **ST-6600-G** Ice Grey Version    (For Double Gear)  
**ST-6603**    **ST-6603-G** Ice Grey Version    (For Triple Gear)



ITEM NO.	SHIMANO CODE NO.	DESCRIPTION	INTERCHANGEABILITY				
			ST-5600	ST-6500	ST-6501	ST-7801	ST-7803
*	<b>Y-6K2 98010</b>	R.H. Main Lever Assembly	B				
1	<b>Y-6K2 98030</b>	L.H. Main Lever Assembly for ST-6600					
	<b>Y-6K2 98040</b>	L.H. Main Lever Assembly for ST-6603	B				
	<b>Y-6K2 98011</b>	R.H. Main Lever Assembly G(Ice Grey Version)	B				
	<b>Y-6K2 98031</b>	L.H. Main Lever Assembly for ST-6600-G(Ice Grey Version)					
	<b>Y-6K2 98041</b>	L.H. Main Lever Assembly for ST-6603-G(Ice Grey Version)	B				
*	<b>Y-6K2 98020</b>	Name Plate & Fixing Screw					
2	<b>Y-6K2 98050</b>	Name Plate & Fixing Screw for ST-6603					
	<b>Y-6K2 98021</b>	Name Plate & Fixing Screw G(Ice Grey Version)					
	<b>Y-6K2 98051</b>	Name Plate & Fixing Screw for ST-6603-G(Ice Grey Version)					
3	<b>Y-6K2 19000</b>	Name Plate Fixing Screw	A			A	A
4	<b>Y-6BD98110</b>	Cable Hook Unit	A	A	A	A	A
5	<b>Y-6K2 18000</b>	R.H. Release Lever Support	A			A	A
	<b>Y-6K2 64000</b>	L.H. Release Lever Support	A			A	A
6	<b>Y-6K2 87000</b>	R.H. Return Spring	A			A	A
	<b>Y-6K2 87100</b>	L.H. Return Spring	A			A	A
7	<b>Y-6K2 98060</b>	Clamp Band Unit (φ23.8 mm - φ24.2 mm)	A			A	A
8	<b>Y-6JA 98050</b>	Clamp Nut & Washer	A			A	A
*	<b>Y-6K2 98070</b>	R.H. Bracket	B				
9	<b>Y-6K2 98080</b>	L.H. Bracket for ST-6600	B				
	<b>Y-6K2 98090</b>	L.H. Bracket for ST-6603	B				
	<b>Y-6K2 98071</b>	R.H. Bracket G(Ice Grey Version)	B				
	<b>Y-6K2 98081</b>	L.H. Bracket for ST-6600-G(Ice Grey Version)	B				
	<b>Y-6K2 98091</b>	L.H. Bracket for ST-6603-G(Ice Grey Version)	B				
10	<b>Y-6K2 50000</b>	Bump Rubber (1.45 mm)					
	<b>Y-6K2 50010</b>	Bump Rubber (1.60 mm)					
	<b>Y-6K2 50020</b>	Bump Rubber (1.85 mm)					
11	<b>Y-6BD76010</b>	Lever Axle Fixing Screw	A			A	A
* 12	<b>Y-6BS 84000</b>	Lever Axle	A			B	B
	<b>Y-6BD85000</b>	Lever Axle G(Ice Grey Version)	B			A	A
13	<b>Y-6JA 98080</b>	R.H. Water-Proof Cap & Fixing Screws (M2.6 x 6)	A			A	A
	<b>Y-6JA 98090</b>	L.H. Water-Proof Cap & Fixing Screws (M2.6 x 6)	A			A	A
14	<b>Y-6K2 98100</b>	Bracket Covers (Pair)	A				
15	<b>Y-86B 90010</b>	Outer Cable Guide	A	A	A	A	A
16	<b>Y-877 11000</b>	Outer Cable Joint	A	A	A	A	A
17	<b>Y-130 03200</b>	Return Spring Installation Tool (TL-ST03)	A			A	A

A: Same parts.

B: Parts are usable, but differ in materials, appearance, finish, size, etc.

Absence of mark indicates non-interchangeability.

0704-2369A

Specifications are subject to change without notice.

**SHIMANO**