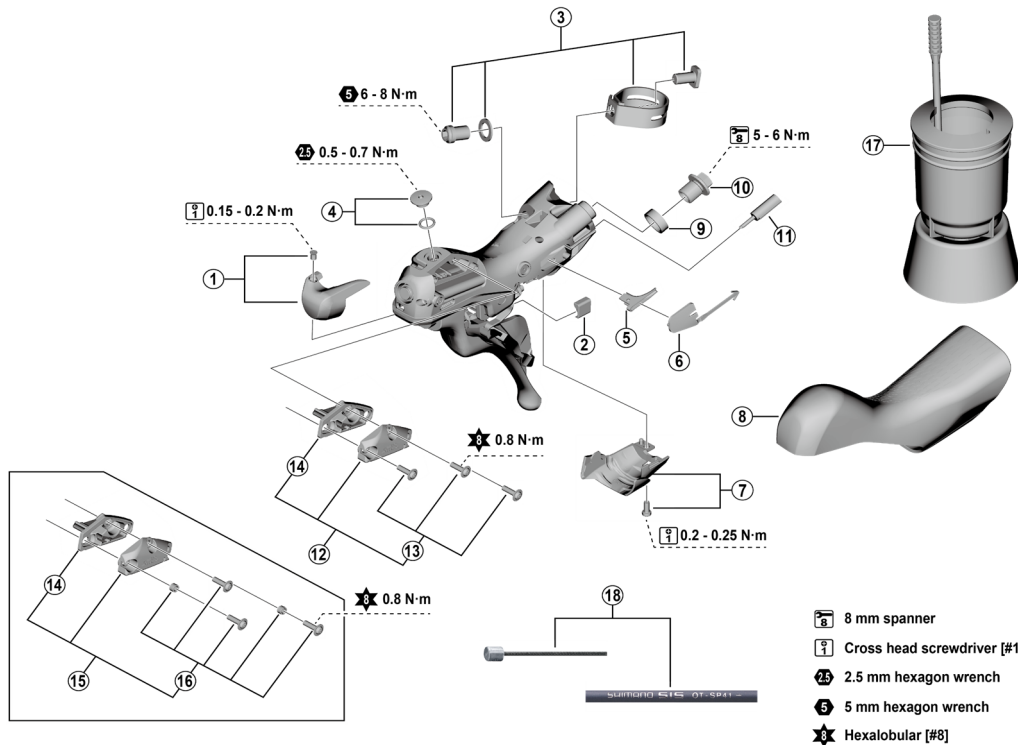


SHIMANO 105 DUAL CONTROL LEVER (For Disc Brake)

ST-R7120 (2x12-speed)



ITEM NO.	SHIMANO CODE NO.	DESCRIPTION	INTERCHANGEABILITY		
1	Y0F398020	Name plate R and fixing screw	A		
	Y0F498010	Name plate L and fixing screw	A		
2	Y63X80000	Main lever support R	A		
	Y63X80010	Main lever support L	A		
3	Y0E098030	Clamp band unit diameter (23.8 - 24.2 mm)	A		
4	Y0F398030	Bleed screw and O-ring	A		
5	Y0RY9801T	SL cable guide R			
	Y07V75000	SL cable guide L	A		
6	Y00E75000	SL cable cover R	A		
	Y0C574000	SL cable cover L	A		
7	Y0F398040	Unit cover R and fixing screw	A		
	Y0F498020	Unit cover L and fixing screw	A		
8	Y0F398010	Bracket covers (pair)	A		
9	Y0RM9801T	Right-hand joint support ring	A		
	Y0C514000	Left-hand joint support ring	A		
10	Y8RD02000	Flange flare nut (M9/black)	A		
11	Y63Z27000	Outer cap with short tongue for ST	A		
12	Y0SD98010	Right-hand lid unit for bracket with bosses	A		
	Y0SE98010	Left-hand lid unit for bracket with bosses	A		
13	Y0SD98020	Lid fixing screw (3 pcs.) for bracket with bosses	A		
14	Y0C678000	Diaphragm R	A		
	Y0C578000	Diaphragm L	A		
15	Y0C598030	Left-hand lid unit for bracket without bosses	A		
16	Y0C698070	Lid fixing screw (3 pcs.) and lid spacer (2 pcs.) for bracket without bosses	A		
17	Y13000090	TL-BR002 Funnel unit for M7 screw	A		
18	Y8ZG98090	OT-SP41 OPTISLICK shift cable sets black (OT-RS900 is included) • Outer cap with short tongue for ST (2 pcs.) • SIS-SP40 outer caps (3 pcs.) • SIS-SP40 sealed outer caps (1 pc.) • Inner end caps (2 pcs.)	A		
	Y8ZG98100	OT-SP41 OPTISLICK shift cable sets white (OT-RS900 is included) • Outer cap with short tongue for ST (2 pcs.) • SIS-SP40 outer caps (3 pcs.) • SIS-SP40 sealed outer caps (1 pc.) • Inner end caps (2 pcs.)	A		
	Y8ZG98110	OT-SP41 OPTISLICK shift cable sets red (OT-RS900 is included) • Outer cap with short tongue for ST (2 pcs.) • SIS-SP40 outer caps (3 pcs.) • SIS-SP40 sealed outer caps (1 pc.) • Inner end caps (2 pcs.)	A		
	Y8ZG98120	OT-SP41 OPTISLICK shift cable sets high-tech gray (OT-RS900 is included) • Outer cap with short tongue for ST (2 pcs.) • SIS-SP40 outer caps (3 pcs.) • SIS-SP40 sealed outer caps (1 pc.) • Inner end caps (2 pcs.)	A		

A: Same parts.

B: Parts are usable, but differ in materials, appearance, finish, size, etc.

Absence of mark indicates non-interchangeability.

Specifications are subject to change without notice.

Torque information is listed.

Sep.-2023-5035

© Shimano Inc. I

SHIMANO

