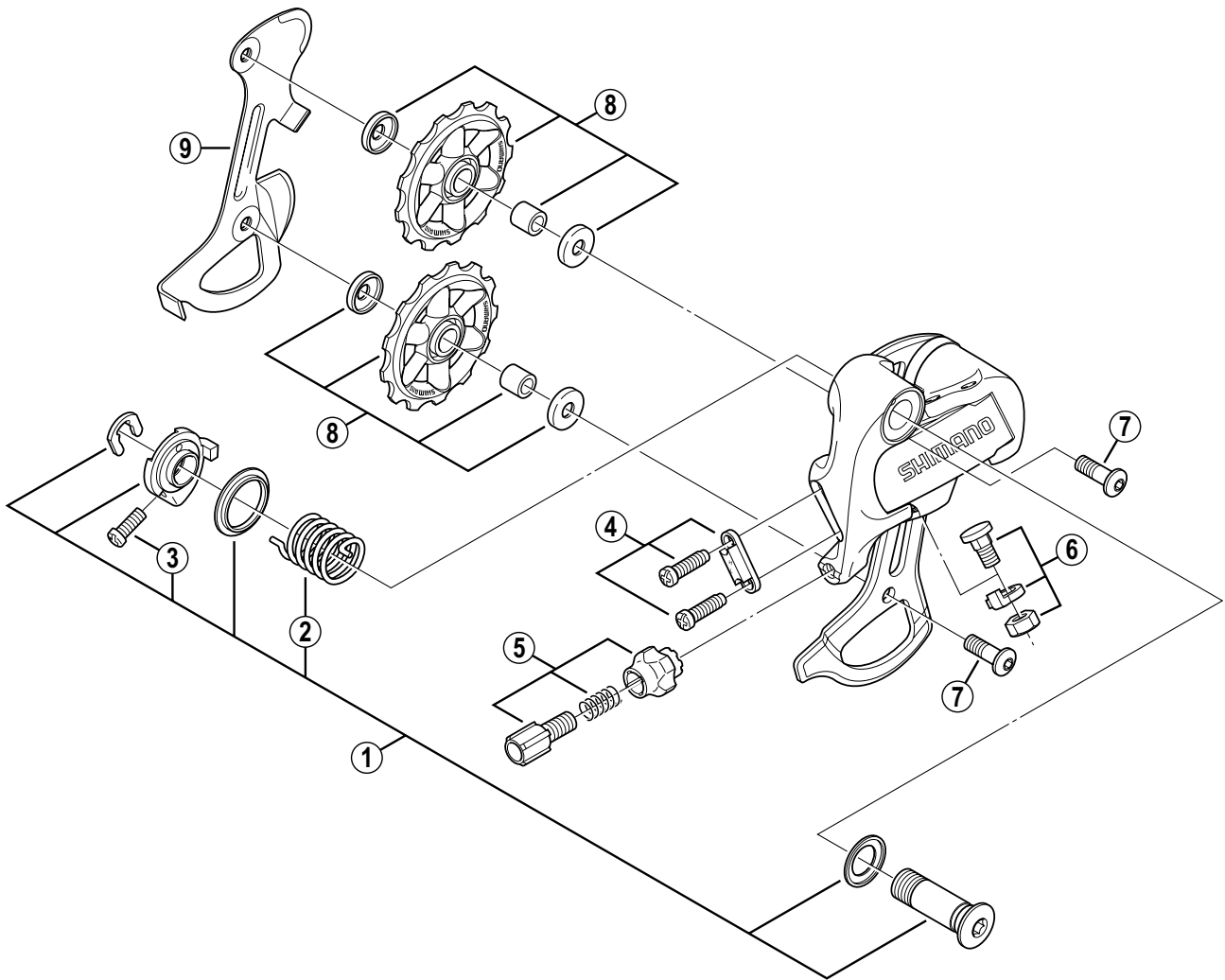


# SHIMANO Rear Derailleur RD-2200 8-Speed



RD-3300  
RD-5500

ITEM NO.	SHIMANO CODE NO.	DESCRIPTION	INTERCHANGEABILITY	
1	Y-5UX 98010	B-Axle Assembly	B	
2	Y-5UX 13000	B-Tension Spring		
3	Y-5T8 22000	B-Tension Adjusting Screw (M4 x 12)	B	B
4	Y-5TK 98020	Stroke Adjusting Screws (M4 x 14.5) & Plate	A	A
5	Y-5T8 98020	Cable Adjusting Bolt Unit	B	B
6	Y-5T8 98030	Cable Fixing Bolt Unit	B	B
7	Y-5TW35010	Pulley Bolt (M5 x 14.5)		
8	Y-5T8 98040	Pulley Unit		
9	Y-5UX 15000	Inner Plate		

A : Same parts.

B : Parts are usable, but differ in materials, appearance, finish, size, etc.

Absence of mark indicates non-interchangeability.

0209-2209

Specifications are subject to change without notice.

# SHIMANO



© 2002 by Shimano Inc.