

Obtaining a driver

* This needs to be performed by a user with administrator privileges.

Install a driver for SM-PCE02

1 Check the status of the device.

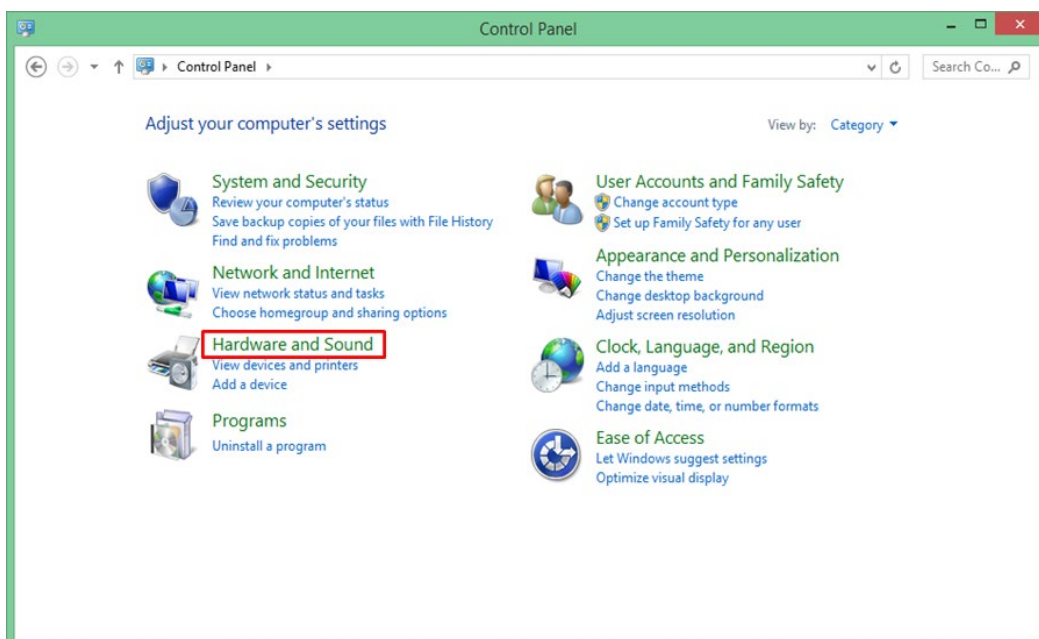
Click "Start" to display the list of applications.

Click "Control Panel" from the list of applications.

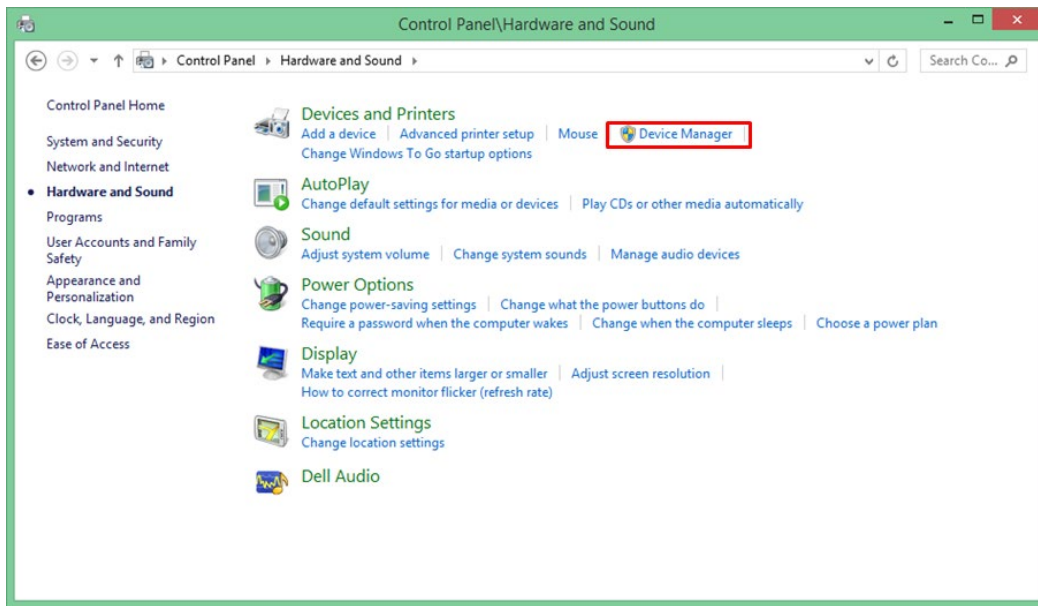
* If it is not listed, you can find it in "Windows System Tools."



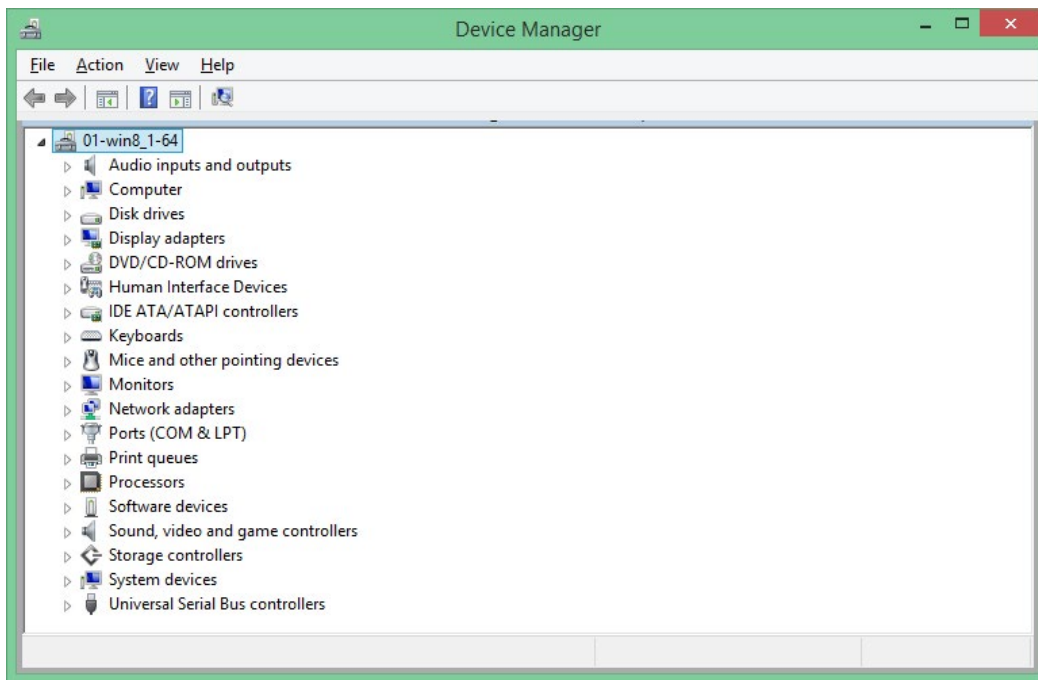
Click "Hardware and Sound".



Click "Devices and Printers" and then "Device Manager."

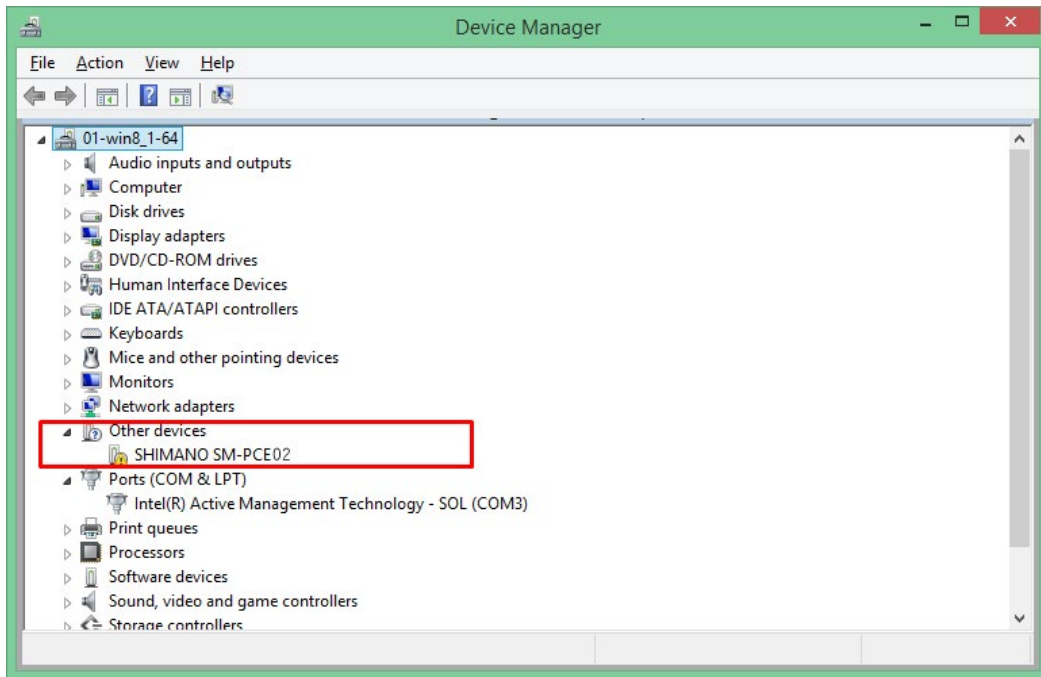


"Device Manager" is displayed.



Connect SM-PCE02.

If the driver is not installed, "SHIMANO SM-PCE02" or "USB Serial Port" will be listed under "Other Devices." The port number may also be displayed.



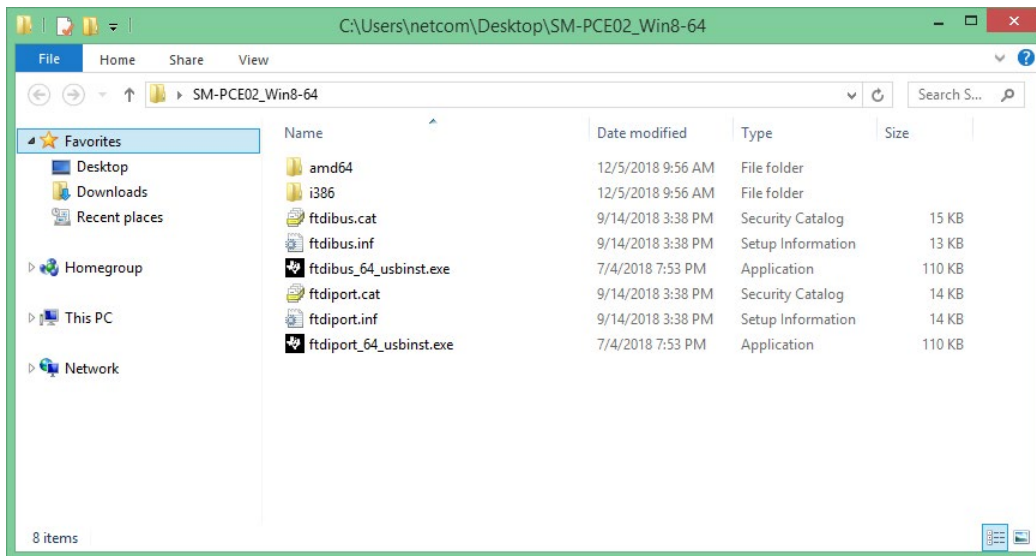
2 Download the driver.

Download the required driver.

SM-PCE02
Windows7 (32bit)
Windows7 (64bit)
Windows8 (32bit)
Windows8 (64bit)
Windows8.1 (32bit)
Windows8.1 (64bit)
Windows10 (32bit)
Windows10 (64bit)

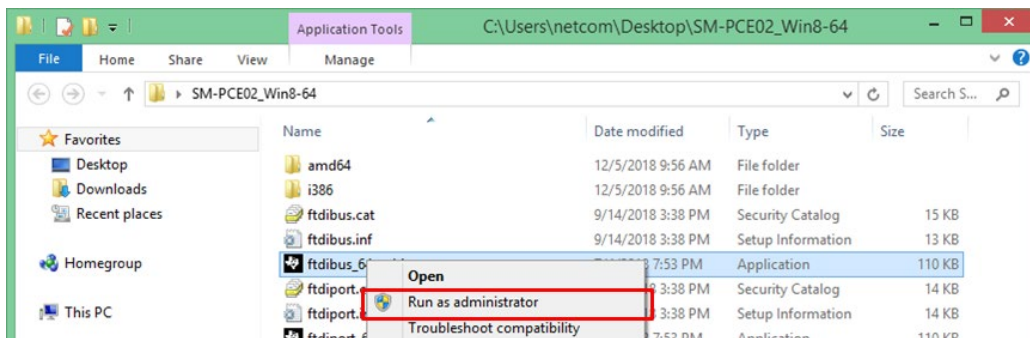
3 Install the driver.

Extract the folder from the downloaded driver.



After extracting the folder, right-click "ftdibus_32_usbinst.exe" in the folder and click "Run as Administrator."

After clicking, the driver begins to install.



Even if a warning message is displayed, install the driver software.

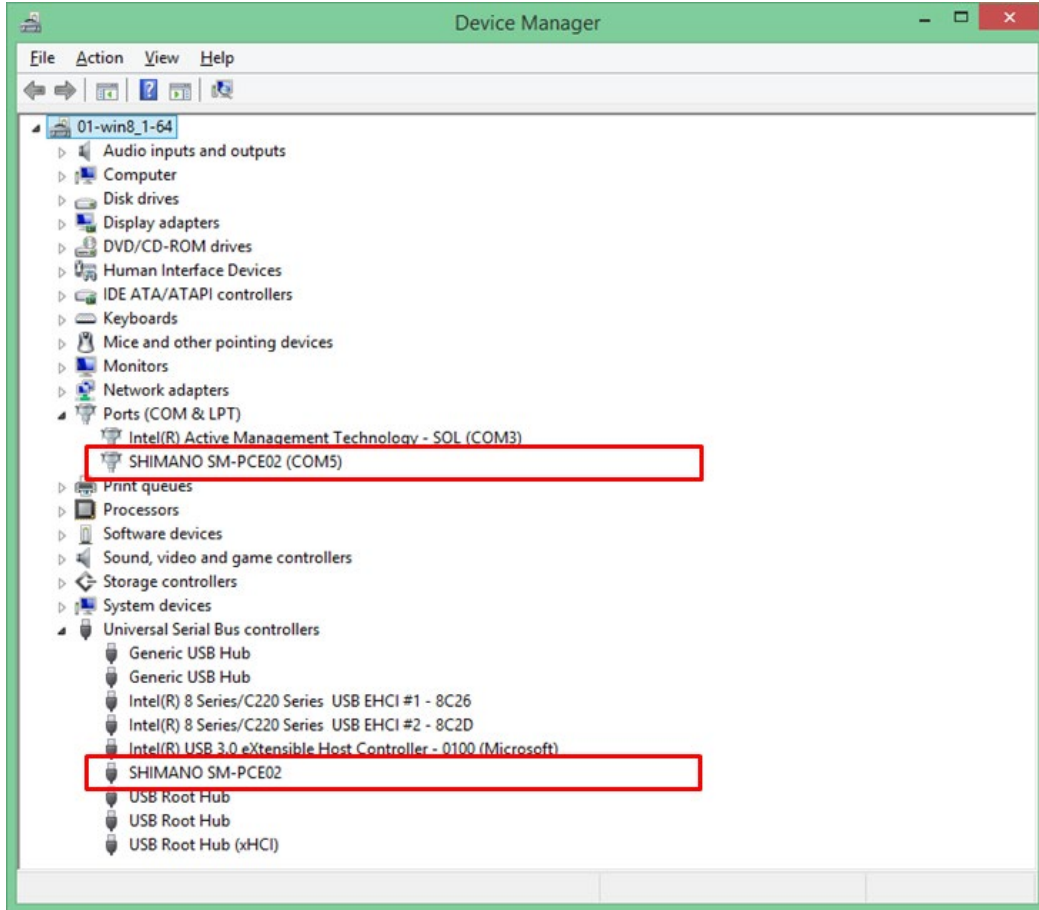
Installation will be complete after a short period of time.

Right-click "ftdiport_32_usbinst.exe" and then click "Run as Administrator" to install it.

No message will be displayed when it completes, so check "Device Manager."

* Refer to step 1 for information on how to open Device Manager.

If "SM-PCE02 (port number)" is listed under "Ports (COM & LPT)" in "Device Manager," installation is complete.



Install a driver for SM-PCE1 or SM-BCR2

1 Check the status of the device.

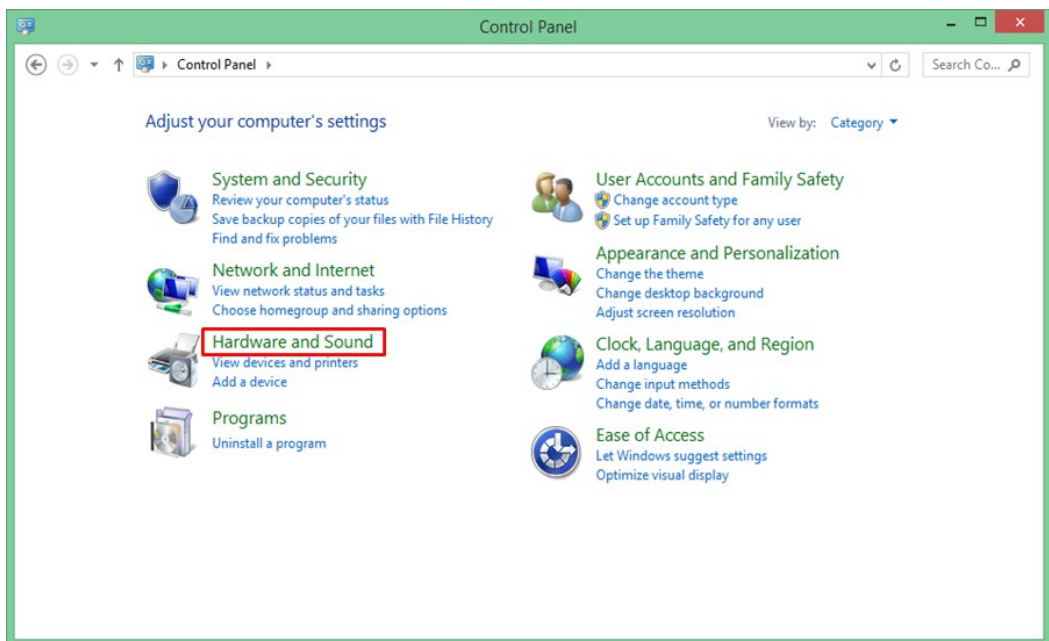
Click "Start" to display the list of applications.

Click "Control Panel" from the list of applications.

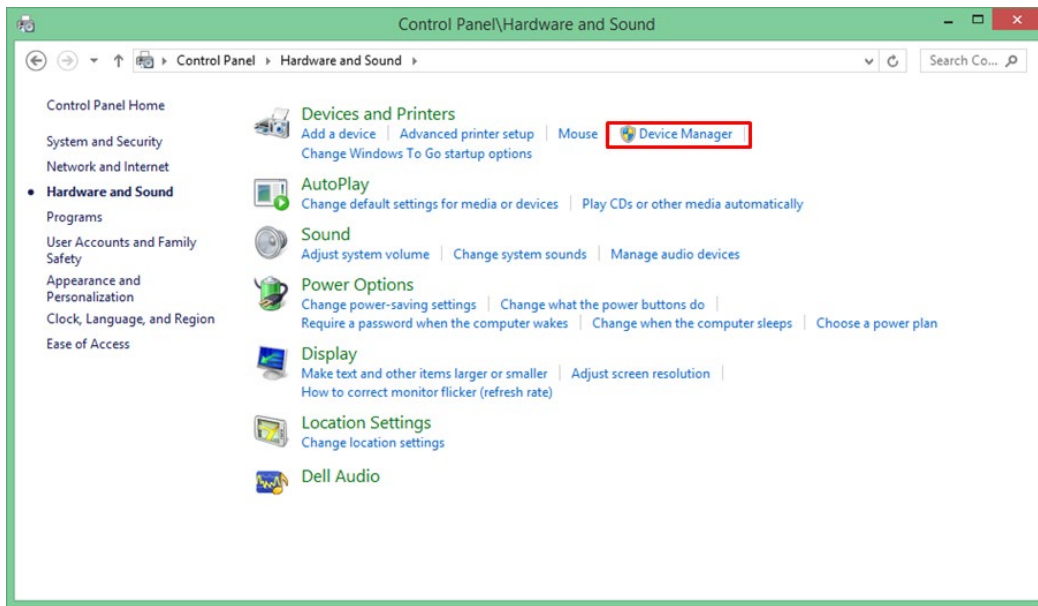
* If it is not listed, you can find it in "Windows System Tools."



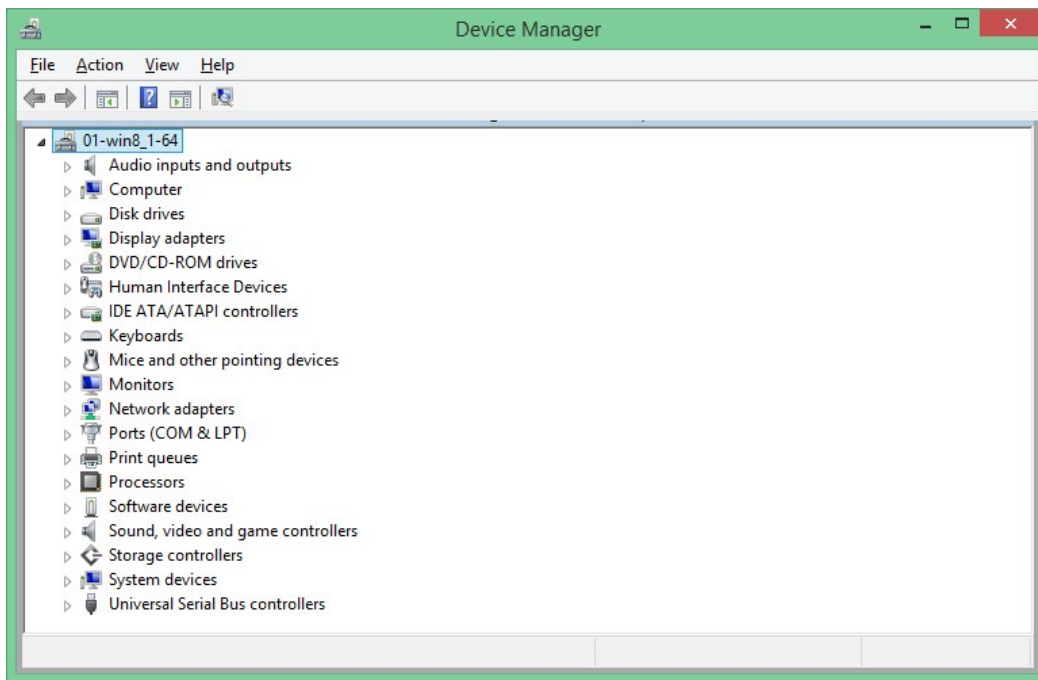
Click "Hardware and Sound".



Click "Devices and Printers" and then "Device Manager."

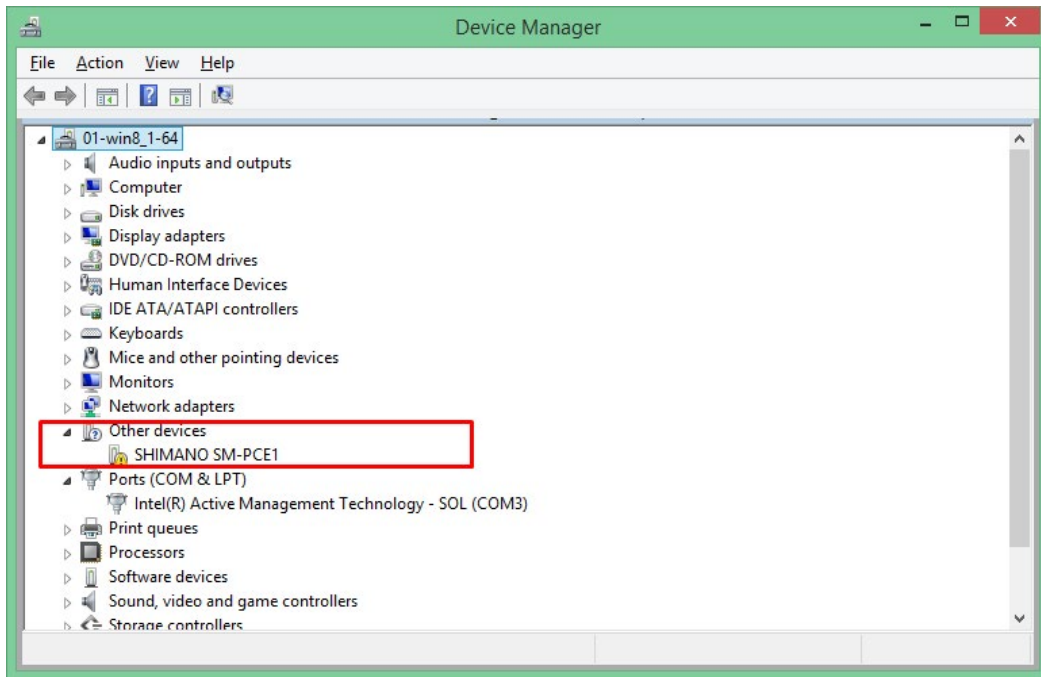


"Device Manager" is displayed.



Connect SM-PCE1.

If the driver is not installed, "SHIMANO SM-PCE1" or "USB Serial Port" will be listed under "Other Devices." The port number may also be displayed.



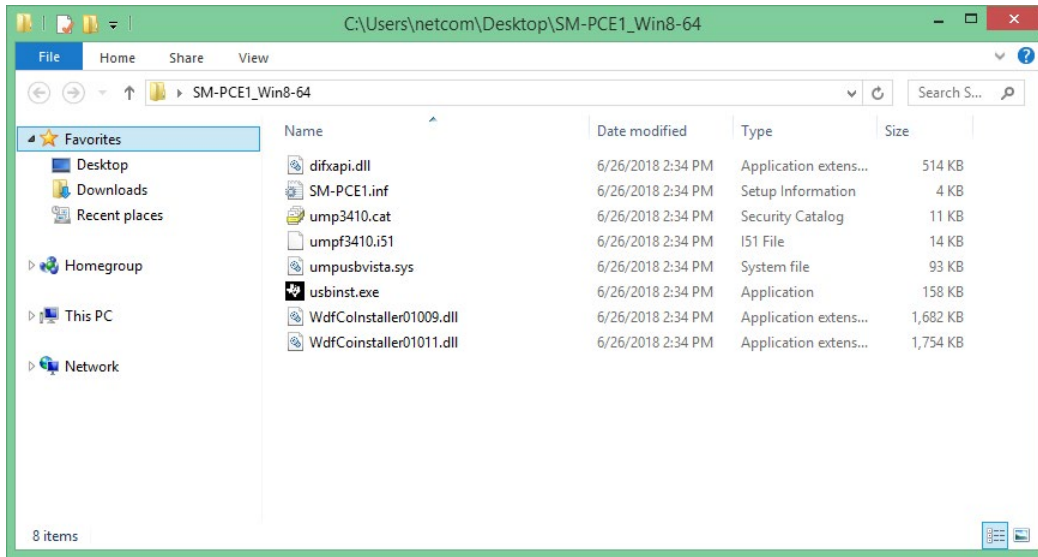
2 Download the driver.

Download the required driver.

SM-PCE1	SM-BCR2
Windows7 (32bit)	Windows7 (32bit)
Windows7 (64bit)	Windows7 (64bit)
Windows8 (32bit)	Windows8 (32bit)
Windows8 (64bit)	Windows8 (64bit)
Windows8.1 (32bit)	Windows8.1 (32bit)
Windows8.1 (64bit)	Windows8.1 (64bit)
Windows10 (32bit)	Windows10 (32bit)
Windows10 (64bit)	Windows10 (64bit)

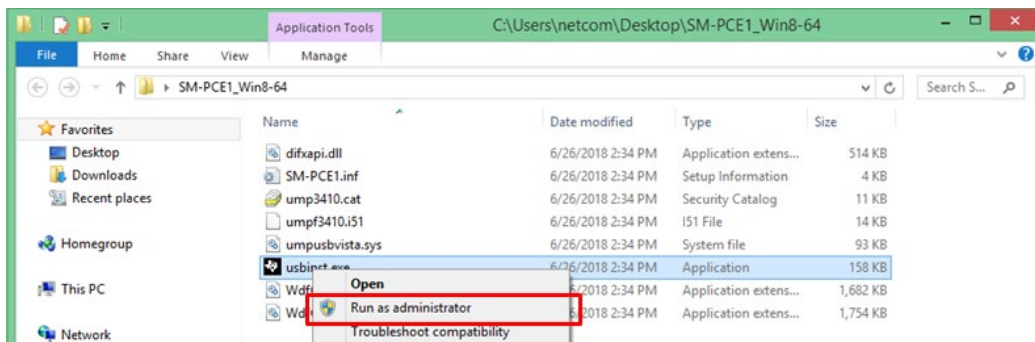
3 Install the driver.

Extract the folder from the downloaded driver.



After extracting the folder, right-click "usbinst.exe" in the folder and click "Run as Administrator."

After clicking, the driver begins to install.



Even if a warning message is displayed, install the driver software.

Installation will be complete after a short period of time.

No message will be displayed when it completes, so check "Device Manager."

* Refer to step 1 for information on how to open Device Manager.

If "SM-PCE1 (port number)" is listed under "Ports (COM & LPT)" in "Device Manager," installation is complete.

