



Shifting Lever

IMPORTANT NOTICE

- Contact the place of purchase or a distributor for information on installation, adjustment, and replacement of the products which are not found in the user's manual. A dealer's manual for professional and experienced bicycle mechanics is available on our website (<https://si.shimano.com>).

For safety, be sure to read this "user's manual" thoroughly before use, follow it for correct use, and store it so that it can be referenced at any time.

The following instructions must be observed at all times in order to prevent personal injury and physical damage to equipment and surroundings. The instructions are classified according to the degree of danger or damage which may occur if the product is used incorrectly.

DANGER	Failure to follow the instructions will result in death or serious injury.
WARNING	Failure to follow the instructions could result in death or serious injury.
CAUTION	Failure to follow the instructions could cause personal injury or physical damage to equipment and surroundings.

Important Safety Information

WARNING

- Because each bicycle may handle slightly differently depending on the model, be sure to learn the proper braking technique (including brake lever pressure and bicycle control characteristics) and operation of your bicycle. Improper use of your bicycle's brake system may result in a loss of control or a fall, which could lead to severe injury.
- Do not disassemble or modify the product. This may cause the product to not operate correctly, and you may suddenly fall and be seriously injured.
- Do not apply the front brake too strongly. If you do so, the front wheel may lock and the bicycle may fall forward, and serious injury may result.
- Because the required braking distance will be longer during wet weather, reduce your speed and apply the brakes early and gently. You may fall or collide and be seriously injured.
- A wet road surface may cause tires to skid; to avoid this, reduce your speed and apply the brakes early and gently. If the tires skid, you may fall and be seriously injured.

Notice

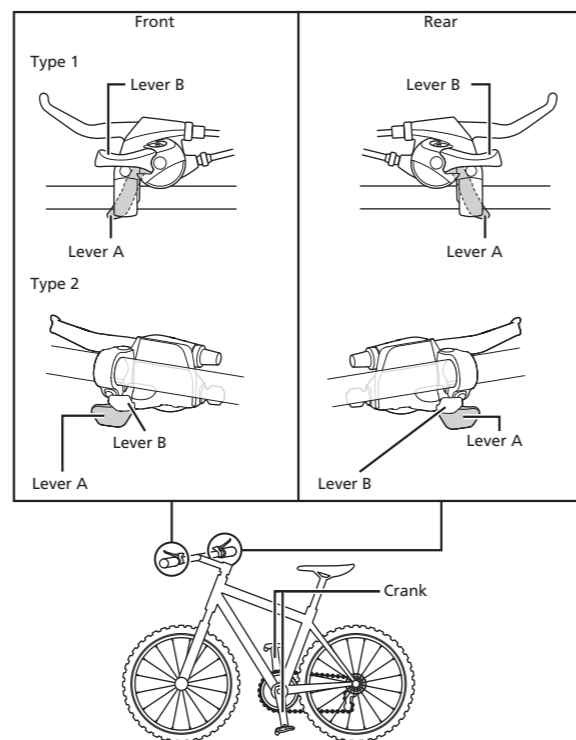
- Be sure to keep turning the crank during lever operation.
- Also read the user's manuals for the front derailleur, rear derailleur, and brake.
- Products are not guaranteed against natural wear and deterioration from normal use and aging.
- For maximum performance we highly recommend SHIMANO lubricants and maintenance products.

Regular Inspections Before Riding the Bicycle

Before riding the bicycle, check the following items. If any problems are found, consult your place of purchase or a distributor.

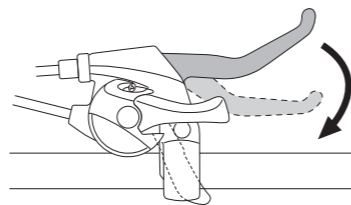
- Do the front and rear brakes work correctly?
- Is gear shifting carried out smoothly?
- Are the levers securely installed to the handlebar?
- Do any abnormal noises occur during operation?

Names of parts



HOW TO OPERATE

■ Operating the brakes



■ Gear shifting operations

Be sure to keep turning the crank arm during the shifting lever operation.

Caution on operation

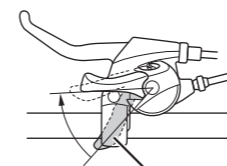
After gear shifting is completed, both levers A and B return to their initial position when you remove your finger. Do not push levers A and B at the same time. Gear shifting is not performed if the levers are pushed at the same time.

■ To make pedaling heavier

Push the lever in the direction indicated with the arrow to shift one gear at a time.

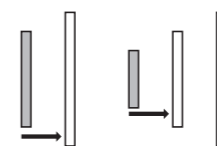
Front side (left side)

Type 1

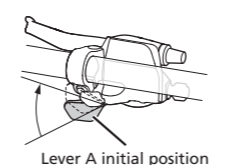


Lever A initial position

Chain position



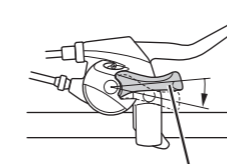
Type 2



Lever A initial position

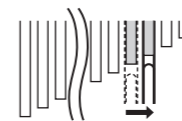
Rear side (right side)

Type 1

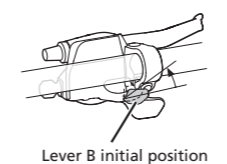


Lever B initial position

Chain position



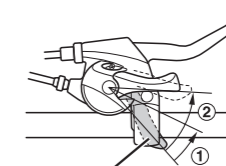
Type 2



Lever B initial position

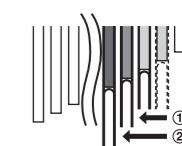
Rear side (right side)

Type 1

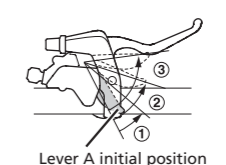


Lever A initial position

Chain position



Type 2



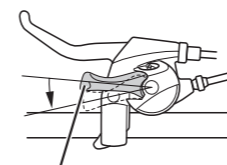
Lever A initial position

■ To make pedaling lighter

Push the lever in the direction indicated with the arrow to shift one gear at a time.

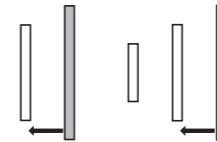
Front side (left side)

Type 1

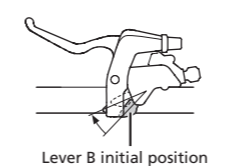


Lever B initial position

Chain position



Type 2



Lever B initial position

SHIMANO

SHIMANO NORTH AMERICA BICYCLE, INC.

One Holland, Irvine, California 92618, U.S.A. Phone: +1-949-951-5003

SHIMANO EUROPE B.V.

High Tech Campus 92, 5656 AG Eindhoven, The Netherlands Phone: +31-402-612222

SHIMANO INC.

3-77 Oimatsu-cho, Sakai-ku, Sakai City, Osaka 590-8577, Japan