

User's Manual

Bar End Shift Lever



Contents

IMPORTANT NOTICE..... 3

Important safety information 4

Notice..... 5

Regular inspections before riding the bicycle 6

Names of parts..... 7




How to operate..... 8

IMPORTANT NOTICE

- Contact the place of purchase or a distributor for information on installation, adjustment, and replacement of the products which are not found in the user's manual. A dealer's manual for professional and experienced bicycle mechanics is available on our website (<https://si.shimano.com>).

For safety, be sure to read this “user's manual” thoroughly before use, follow it for correct use, and store it so that it can be referenced at any time.

The following instructions must be observed at all times in order to prevent personal injury and physical damage to equipment and surroundings. The instructions are classified according to the degree of danger or damage which may occur if the product is used incorrectly.

	DANGER	Failure to follow the instructions will result in death or serious injury.
	WARNING	Failure to follow the instructions could result in death or serious injury.
	CAUTION	Failure to follow the instructions could cause personal injury or physical damage to equipment and surroundings.

Important safety information

WARNING

- Do not disassemble or modify the product. This may cause the product to not operate correctly, and you may suddenly fall and be seriously injured.

Notice

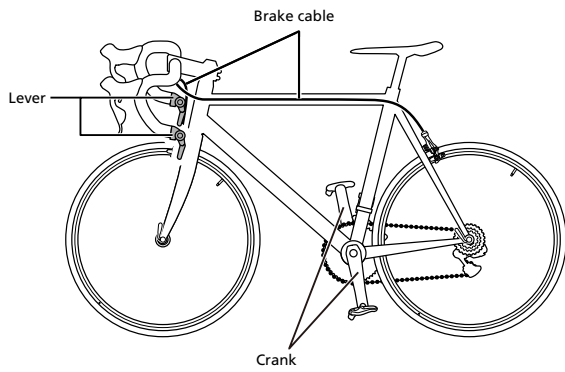
- Be sure to keep turning the crank during the lever operation.
- Products are not guaranteed against natural wear and deterioration from normal use and aging.
- For maximum performance we highly recommend SHIMANO lubricants and maintenance products.

Regular inspections before riding the bicycle

Before riding the bicycle, check the following items. If any problems are found, consult your place of purchase or a distributor.

- Is gear shifting carried out smoothly?
- Do any abnormal noises occur during operation?
- Are the levers securely installed to the handlebar?

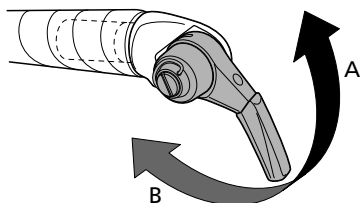
Names of parts



How to operate

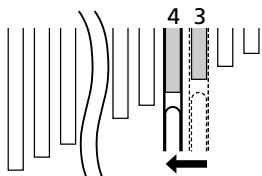
Be sure to keep turning the crank during the lever operation.

Rear



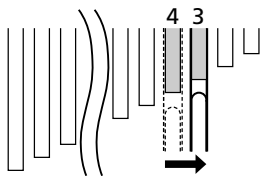
A: Shifts from smallest to largest sprocket side

Example: From the 3rd to 4th sprocket

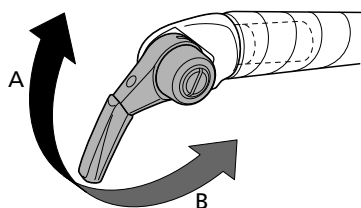


B: Shifts from largest to smallest sprocket side

Example: From the 4th to 3rd sprocket

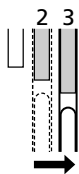


Front



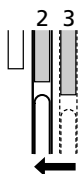
A: Shifts from smallest to largest chainring side

Example: From the 2nd to 3rd chainring



B: Shifts from largest to smallest chainring side

Example: From the 3rd to 2nd chainring



SHIMANO

SHIMANO NORTH AMERICA BICYCLE, INC.
One Holland, Irvine, California 92618, U.S.A. Phone: +1-949-951-5003

SHIMANO EUROPE B.V.
High Tech Campus 92, 5656 AG Eindhoven, The Netherlands Phone: +31-402-612222

SHIMANO INC.
3-77 Oimatsu-cho, Sakai-ku, Sakai City, Osaka 590-8577, Japan