



Rear Derailleur (DI2)

IMPORTANT NOTICE

- Contact the place of purchase or a distributor for information on installation, adjustment, and replacement of the products which are not found in the user's manual. A dealer's manual for professional and experienced bicycle mechanics is available on our website (<https://si.shimano.com>).

For safety, be sure to read this "user's manual" thoroughly before use, follow it for correct use, and store it so that it can be referenced at any time.

The following instructions must be observed at all times in order to prevent personal injury and physical damage to equipment and surroundings. The instructions are classified according to the degree of danger or damage which may occur if the product is used incorrectly.

DANGER	Failure to follow the instructions will result in death or serious injury.
WARNING	Failure to follow the instructions could result in death or serious injury.
CAUTION	Failure to follow the instructions could cause personal injury or physical damage to equipment and surroundings.

Important safety information

WARNING

- Do not disassemble or modify the product. This may cause the product to not operate correctly, and you may suddenly fall and be seriously injured.
- Never use alkali based or acid based solvents such as rust cleaners. If those solvents are used the chain might break and cause serious injury.
- Clean the chain with an appropriate chain cleaner regularly. Intervals between maintenance depend on the use and riding circumstances.
- Check the chain for any damage (deformation or cracking), skipping, or other abnormalities such as unintended gear shifting. If any problems are found, consult your place of purchase or a distributor. The chain may break, and you may fall.

Notice

- Be sure to check that the plate unit cover and cap are installed before riding the bicycle.
 - * In the case of a model with a chain stabilizer (However, there are models without a cap.)
- Be careful not to get water into the E-TUBE ports.
- The components are designed to be fully waterproofed to withstand wet weather riding conditions; however, do not deliberately place them into water.
- Do not clean the bicycle with a high-pressure washer. If water gets into any of the components, operating problems or corrosion may result.
- Handle the components carefully, and avoid subjecting them to strong shock.
- Do not use thinner or other solvents to clean the products. Such solvents may damage the surface.
- If gear shifting operations cannot be carried out smoothly, clean the shifting unit and lubricate all moving parts.

- If the chain keeps skipping, replace the gears and chain at the place of purchase.
- If there is a large amount of excess play in the pulleys and extra noise is generated while riding, replace the pulleys at your place of purchase.
- The gears should be periodically washed with a neutral detergent. In addition, cleaning the chain with neutral detergent and lubricating it can be an effective way of extending the life of the gears and the chain.
- Contact the place of purchase for updates of the component software. The most up-to-date information is available on the SHIMANO website.
- Products are not guaranteed against natural wear and deterioration from normal use and aging.
- For maximum performance we highly recommend SHIMANO lubricants and maintenance products.

This device complies with part 15 of the FCC Rules. Operation is subject to the following two conditions:

(1) This device may not cause harmful interference, and (2) this device must accept any interference received, including interference that may cause undesired operation.

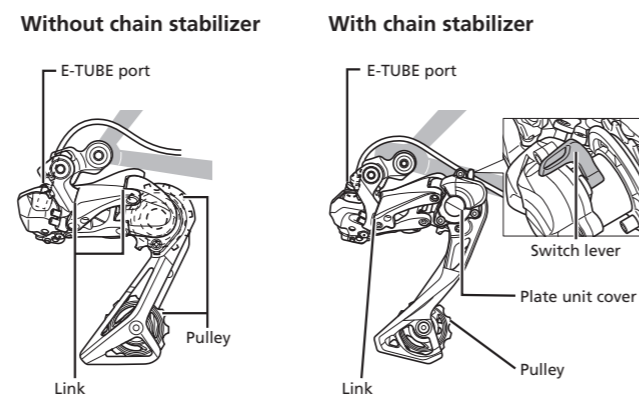
Regular inspections before riding the bicycle

Before riding the bicycle, check the following items. If any problems are found, consult your place of purchase or a distributor.

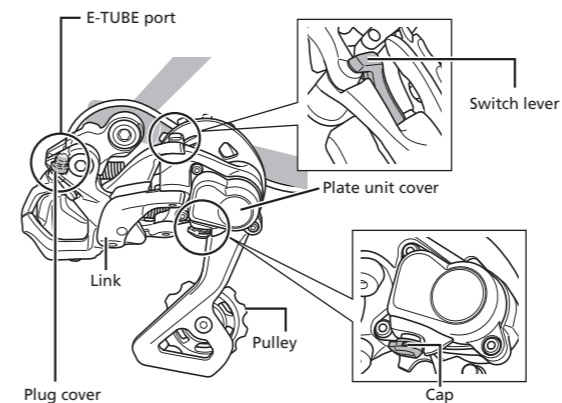
- Is gear shifting carried out smoothly?
- Has excess play increased in the links?
- Has excess play increased in the pulleys?
- Are there any abnormal noises coming from the derailleur?
- Has the chain become elongated?
- Is there any noticeable damage on the chain?
- Is the plug cover installed in the correct position? *For MTB

Names of parts

<For ROAD>



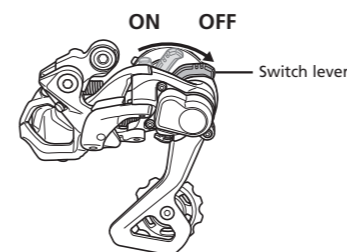
<For MTB>



How to operate

When removing the rear wheel, be sure to first move the switch lever to the OFF position.

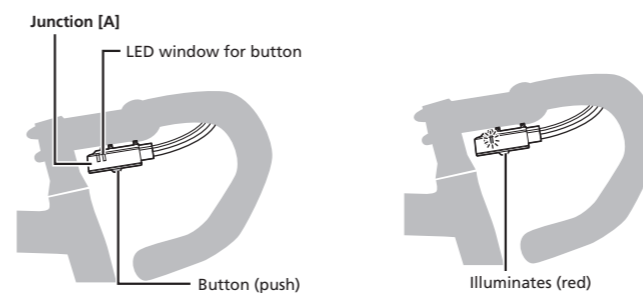
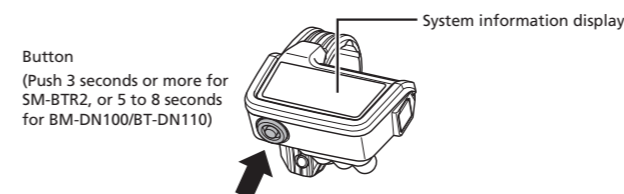
- * The shape and position of the switch lever differ depending on the model.



About the RD protection function

- * Rotate the front chainwheel while restoring operation after the RD protection function has activated.

In order to protect the system when the bicycle falls and is subjected to a strong impact, the RD protection function will activate and momentarily sever the connection between the motor and the link, impairing the proper function of the rear derailleur. If this happens, press and hold the mode button on the system information display or the button on junction [A] (for 3 seconds or more for SM-BTR2, or 5 to 8 seconds for BM-DN100/BT-DN110). This will restore the connection between the motor and the link, and clear the RD protection function for the rear derailleur. When recovery cannot be performed via button operations, it may be possible by hand. Check with the place of purchase in advance.



Press and hold button → illuminate (red) → flash (red) → RD protection reset → complete

(The LED flashes red after holding down the button for approximately 3 seconds for the SM-BTR2 or approximately 5 seconds for the BM-DN100/BT-DN110.)

When the red LED of junction [A] is lit, the rear derailleur will not shift. Press the button until the red LED turns off.

SHIMANO

SHIMANO NORTH AMERICA BICYCLE, INC.
One Holland, Irvine, California 92618, U.S.A. Phone: +1-949-951-5003

SHIMANO EUROPE B.V.
High Tech Campus 92, 5656 AG Eindhoven, The Netherlands Phone: +31-402-612222

MADISON (A DIVISION OF H.YOUNG (OPERATIONS) LTD)
Roebuck Way, Knowlhill, Milton Keynes, Buckinghamshire, MK5 8HL, United Kingdom

SHIMANO INC.
3-77 Oimatsu-cho, Sakai-ku, Sakai City, Osaka 590-8577, Japan

