



Electric Wire

IMPORTANT NOTICE

- Contact the place of purchase or a distributor for information on installation, adjustment, and replacement of the products which are not found in the user's manual. A dealer's manual for professional and experienced bicycle mechanics is available on our website (<https://si.shimano.com>).

For safety, be sure to read this "user's manual" thoroughly before use, follow it for correct use, and store it so that it can be referenced at any time.

The following instructions must be observed at all times in order to prevent personal injury and physical damage to equipment and surroundings. The instructions are classified according to the degree of danger or damage which may occur if the product is used incorrectly.

⚠ DANGER	Failure to follow the instructions will result in death or serious injury.
⚠ WARNING	Failure to follow the instructions could result in death or serious injury.
⚠ CAUTION	Failure to follow the instructions could cause personal injury or physical damage to equipment and surroundings.

Important safety information

⚠ WARNING

- Do not disassemble or modify the product. This may cause the product to not operate correctly, and you may suddenly fall and be seriously injured.

Notice

- Be sure to use the SHIMANO original tool to remove and insert electric wires. The compatible SHIMANO original tool differs according to the model of the electric wire.
- When removing and inserting electric wires, do not forcibly bend the plug part. It may result in a poor connection.
- The connectors are small and waterproof, so do not connect and disconnect electric wires except when necessary. Doing so may impair the waterproofing.
- When connecting electric wires, make sure that foreign matter does not get inside the plug or E-TUBE port. A connection with foreign matter present may result in a malfunction.
- If the plug is exposed during storage, transportation, or maintenance work, and there is a possibility of foreign matter getting inside, protect the plug with masking tape or a similar material.
- If you do not feel a click when connecting an electric wire, contact the place of purchase.

Regular inspections before riding the bicycle

Before riding the bicycle, check the following items. If any problems are found, consult your place of purchase or a distributor.

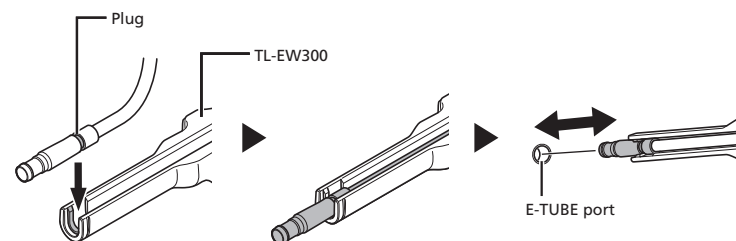
- Is there any noticeable damage to the electric wires?

Connecting and disconnecting the electric wire

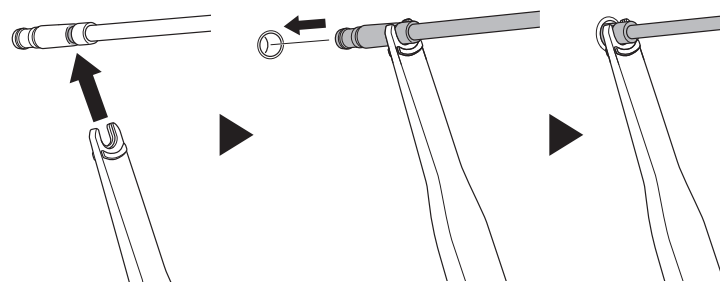
■ EW-SD300

Use the SHIMANO original tool TL-EW300 when connecting or disconnecting the EW-SD300.

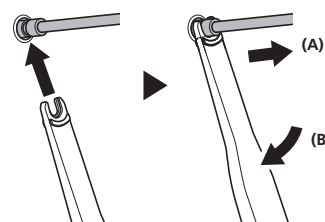
- * When connecting or disconnecting the EW-SD300, use the method indicated in the figure. When connecting, push it straight in until you feel it click into place.



- When connecting the EW-SD300, the method below can also be used.



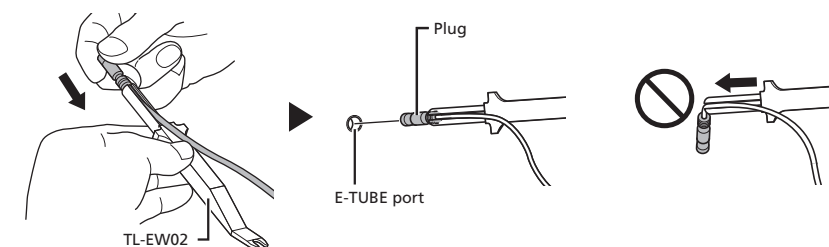
- * When disconnecting the EW-SD300, the method below can also be used. Lift the TL-EW300 straight up as indicated in (A), or use the TL-EW300 as a lever as indicated in (B).



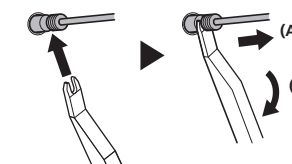
■ EW-SD50

Use the SHIMANO original tool TL-EW02 when connecting or disconnecting the EW-SD50. When connecting, push it straight in until you feel it click into place.

- * When connecting the EW-SD50, use the method indicated in the figure.



- * When disconnecting the EW-SD50, lift the TL-EW02 straight up as indicated in (A), or use the TL-EW02 as a lever as indicated in (B).



Troubleshooting

Details	Causes / possibilities	Remedy
Click cannot be felt when connecting an electric wire. Cannot fully connect a wire.	Is there foreign matter inside the plug or E-TUBE port?	Contact the place of purchase.

SHIMANO



SHIMANO NORTH AMERICA BICYCLE, INC.
One Holland, Irvine, California 92618, U.S.A. Phone: +1-949-951-5003

SHIMANO EUROPE B.V.
High Tech Campus 92, 5656 AG Eindhoven, The Netherlands Phone: +31-402-612222

MADISON (A DIVISION OF H.YOUNG (OPERATIONS) LTD)
Roebuck Way, Knowlhill, Milton Keynes, Buckinghamshire, MK5 8HL, United Kingdom

SHIMANO INC.
3-77 Oimatsu-cho, Sakai-ku, Sakai City, Osaka 590-8577, Japan