

SM-PCE1

NOTE

- Do not use outdoors or in environments with high humidity.
- Do not place the SM-PCE1 on dusty floors when using it.
- Place the SM-PCE1 on a stable surface such as a table when using it.
- Do not place any objects on top of the SM-PCE1 or its cables.
- Do not wrap the cables into bundles.
- Do not hold the SM-PCE1 by the cables when carrying it.
- Do not apply excessive tension to the cables.
- Do not use any USB cable other than the USB cable which is supplied with the SM-PCE1.
- Connect the SM-PCE1 directly to a computer, without using an intermediate device such as a USB hub.
- Do not ride the bicycle while the SM-PCE1 and cable are still connected to it.
- Do not connect two or more of the same units to the same connection point. If this is not done, the units may not operate correctly.
- Do not connect or disconnect units again while unit recognition is in progress or after recognition is complete. If this is not done, the units may not operate correctly.
- Check the procedures which are given in the user's manual for the PC application when connecting and disconnecting units.
- After connecting the battery and launching the PC application, be sure to disconnect the SM-PCE1 from the bicycle and then disconnect and reconnect the battery. If this is not done, the system may not operate correctly.
- The tightness of the PC link cable will tend to drop after repeated connections and disconnections. If this happens, replace the cable.
- Do not wash the SM-PCE1 or wipe it using detergents.
- Do not connect two or more SM-PCE1 units to the same PC at the same time. If two or more SM-PCE1 units are connected, they will not operate correctly. In addition, operating errors may occur at the PC and it may require the PC to be restarted.

Specifications

Operating temperature	0 °C -- 40 °C
Storage temperature	- 20 °C -- 70 °C
Operating/ storage humidity	10 -- 95 % RH/ 10 -- 95 % RH
Rated voltage	5 V ± 5 %
Rated power	2.5 W
Interface	USB 2.0 (Full Speed)
Port type	At PC: A type At SM-PCE1: Mini B type
Dimensions	96.4 x 53.4 x 22 mm
Weight	80 g
LED	During normal operation: Illuminated During charging: Flashing

- Accessories: * PC link cable (x 2) 2 m
* USB cable (x 1) 50 cm

Compatible PCs

Operating system	Windows XP 32bit/64bit (SP2 or higher) Windows Vista 32bit/64bit Windows 7 32bit/64bit
Required components	.NET Framework 3.5
Other hardware	USB 1.1/2.0 Active Internet connection Display resolution: XGA (1024 x 768 dots) or higher

(as of 1 November 2010)

Features

The SM-PCE1 can be used to connect a PC to the bicycle (system or unit), and a PC application (such as Shimano STEPS Manager) can be used to carry out tasks such as problem diagnosis of single units and the whole system, updating firmware*, and retrieving logs. For details on operating the PC, refer to the manual for the PC application.

* Firmware: the software inside each unit

Flow of operation when using the SM-PCE1 for the first time

After purchasing the SM-PCE1, follow this procedure to prepare the SM-PCE1 for use.

- Download the PC application from the website.
- Install the PC application.
- Connect the SM-PCE1 to the PC.
- Install the USB driver.
 - For details, refer to the manual for the PC application.
 - The method for displaying the manual for Shimano STEPS Manager is given in "Displaying the manual for Shimano STEPS Manager".
- Connect the SM-PCE1 to the system or to a unit.

This completes the preparation for using the SM-PCE1.

* These Service Instructions describe the procedure using Shimano STEPS Manager as an example.

* Shimano STEPS Manager is one type of PC application.

1. Downloading the PC application

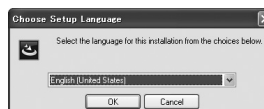
The PC application can be obtained by downloading it from <http://media.shimano.com>. You will need the following user ID and password at this time.

- User ID: shimano
- Password: 2s8m8n3

2. Installing the PC application

After downloading the PC application, run the Installer to install it to the PC by the following procedure. (The screenshots below show examples of installing Shimano STEPS Manager to a PC which is running Windows XP.)

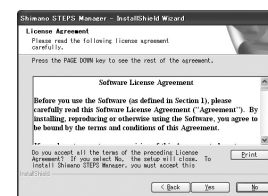
- Run the Installer. Select the language in the window which appears, and then click [OK].



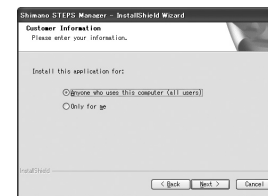
- Click the [Next] button.



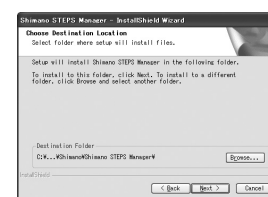
- If you agree to the terms of the Software License Agreement, click the [Yes] button.



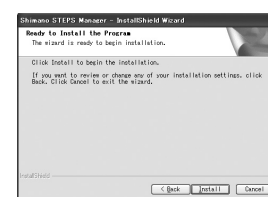
- If you would like Shimano STEPS Manager to be available for use by all users of the PC, select "Anyone who uses this computer (all users)". If you would like only the current user of the PC to be able to use the application, select "Only for me". After making the selection, click the [Next] button.



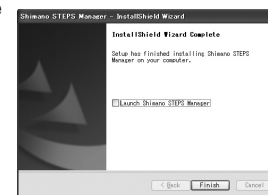
- Select the installation folder and then click the [Next] button.



- Installation will begin when you click the [Install] button.

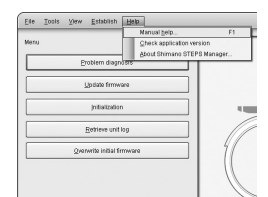


- When installation is complete, the following window appears. Click the [Finish] button to close the installation wizard. If you select "Launch Shimano STEPS Manager", Shimano STEPS Manager will be launched when you click the [Finish] button.



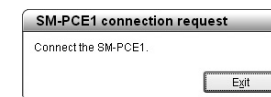
■ Displaying the manual for Shimano STEPS Manager

After Shimano STEPS Manager is launched, you can select "Manual Help" from the "Help" menu on the menu bar to display the user's manual for Shimano STEPS Manager.



3. Connect the SM-PCE1 to the PC

When the PC application is run, a "Connect the SM-PCE1." message will be displayed, so connect the USB cable of the SM-PCE1 to the PC.



4. Install the USB driver

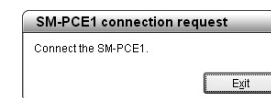
Install the USB driver according to the instructions given in the manual for the PC application (such as Shimano STEPS Manager).

5. Connect the SM-PCE1 to the system or unit

Connect the SM-PCE1 to the system or to a unit according to the instructions given in the manual for the PC application (such as Shimano STEPS Manager).

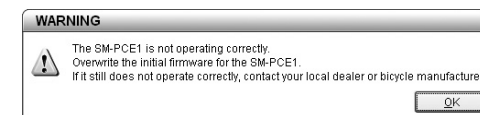
Troubleshooting

- If the message "Connect the SM-PCE1." appears on the PC screen shortly after the SM-PCE1 has been connected to the PC, there may be a problem with the SM-PCE1. (The message window shown below appears when Shimano STEPS Manager is being used.)



If the same problem occurs even after repeatedly disconnecting and reconnecting the USB cable, contact the place of purchase or the nearest bicycle manufacturer in the country of use.

- If the LED on the SM-PCE1 does not illuminate after the PC application has been launched, the firmware may not have been correctly written into the SM-PCE1. In such cases, a message such as the following will appear on the PC screen. (The message window shown below appears when Shimano STEPS Manager is being used.)



Use the load initial firmware function to reload the firmware, and if this does not solve the problem, contact the place of purchase or the nearest bicycle manufacturer in the country of use.

SHIMANO

SHIMANO EUROPE B.V.
 Industrieweg 24, 8071 CT Nunspeet, The Netherlands Phone: +31-341-272222

SHIMANO AMERICAN CORPORATION
 One Holland, Irvine, California 92618, U.S.A. Phone: +1-949-951-5003

SHIMANO INC.
 3-77 Oimatsu-cho, Sakai-ku, Sakai-shi, Osaka 590-8577, Japan

* Service Instructions in further languages are available at :
<http://techdocs.shimano.com>

Please note: specifications are subject to change for improvement without notice. (English)
 © May 2011 by Shimano Inc. XBC IZM Printed in Japan.