

SERVICE INSTRUCTIONS

SI-65E0C

SL-1056 SL-1055 SL-A551 SL-A550 Shifting Lever SL-A410

Before use, read these instructions carefully, and follow them for correct use.

Type 1: SIS type (SL-1056/SL-A551: 8-sprocket, SL-1055/SL-A550: 7-sprocket) with friction-select mechanism
Type 2: SIS type (SL-A410: 7-sprocket)

Note

* For SIS use, be sure to use the following combination:

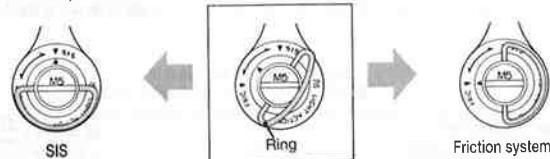
	8-sprocket, SIS	7-sprocket, SIS
Shifting lever	SL-1056/SL-A551/SL-6401-8	SL-1055/SL-A550/SL-6400/SL-A410
Rear derailleur	RD-1056/RD-A551/RD-6401	RD-1055/RD-A550/RD-1056/ RD-A551/RD-6400/RD-6401/ RD-A410
Freehub	FH-1056/FH-A551/ FH-7403/FH-6402-HG	FH-1055/FH-A550/FH-A410/ FH-6400-HG/FH-6401-HG
Cassette sprocket	CS-HG70-8/CS-HG90-8	CS-HG70/CS-HG90/CS-HG50
Chain	CN-UG50/CN-HG50/CN-HG90/CN-HG70	
Outer casing	Shimano SIS outer casing	
Bottom bracket guide	SM-SP55/SM-SP25/SM-SP15	

* Because the high cable resistance of a frame with internal cable routing would impair the SIS function, this type of frame should not be used.

* SL-1056, SL-1055, SL-A551, SL-A550 and SL-A410 cannot be used in combination with the Dura-Ace rear derailleur.

SIS operation

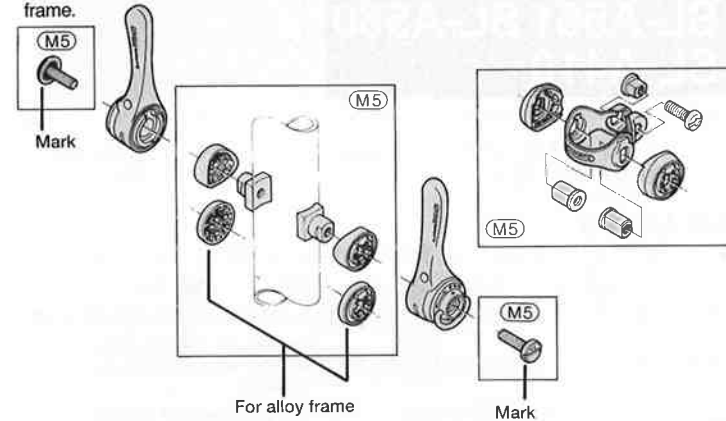
Turn the ring and set to either SIS or friction. (The SL-A410 is not equipped with this mechanism.) Be sure to turn the ring securely to the▲set position.



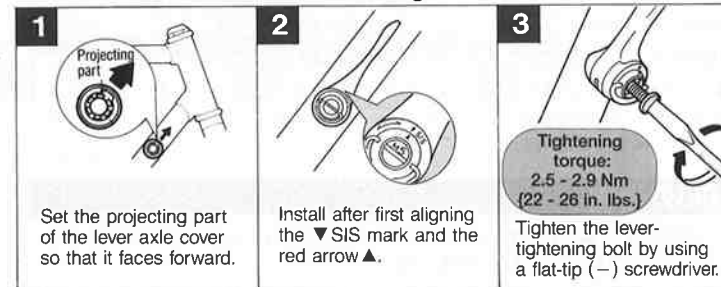
Installation of the shifting lever

Install by referring to the illustration below.

There are two types of lever axle cover: the type for M5 and the type for the alloy frame.



Installation of the rear side shifting lever



SHIMANO

SHIMANO AMERICAN CORPORATION

One Shimano Drive, P.O. Box 19615, Irvine, California U.S.A. 92713-9615 Tel. (714) 951-5003

SHIMANO (EUROPA) GmbH.

Kleinhülsen 1-3 4010 Hilden, Germany Tel. 02103-5005-0

SHIMANO INC.

77 Chinatsu-cho, 3-cho, Sakai, Osaka, 590 Japan Tel. (0722)-23-3213

These service instructions are printed on recycled paper and can be recycled again.



Please note: specifications are subject to change for improvement without notice. (English)
© Jun. 1994 by Shimano Inc. XBC SZK Printed in Japan.