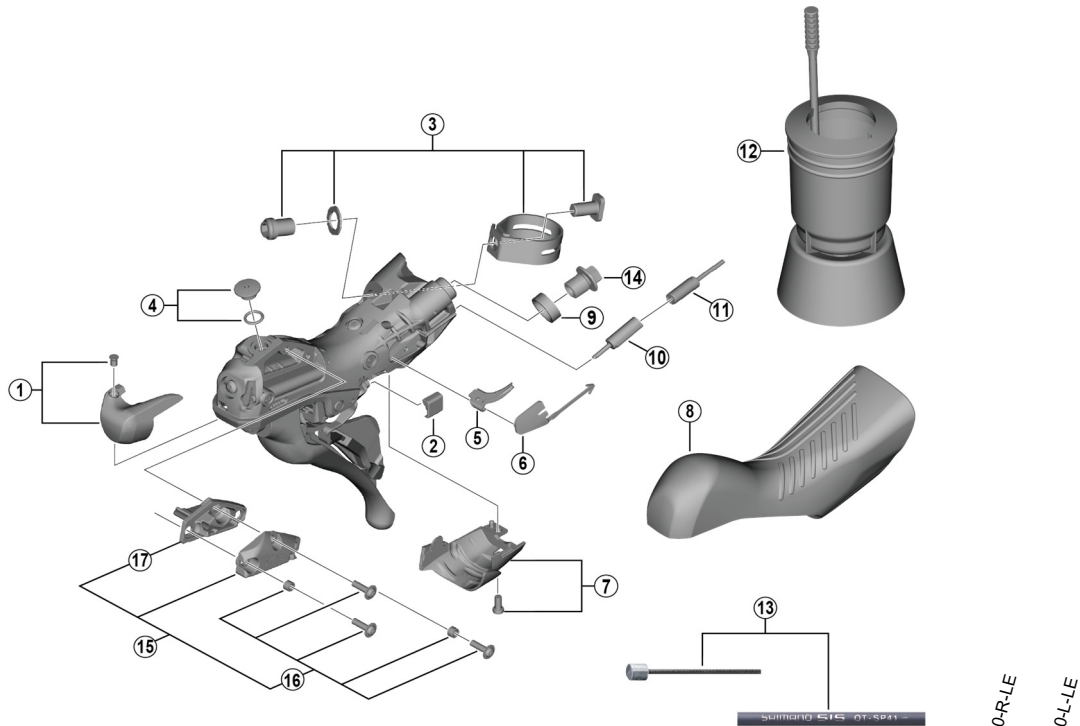


GRX Dual Control Lever (2x11-speed) For Disc Brake

ST-RX810-R
ST-RX810-L

ST-RX810-R-LE
ST-RX810-L-LE



Note

There are no specific service parts for ST-RX810-R-LE/ST-RX810-L-LE.
ST-RX810-R/ST-RX810-L service parts can be used for ST-RX810-R-LE/ST-RX810-L-LE.

ITEM NO.	SHIMANO CODE NO.	DESCRIPTION	INTERCHANGEABILITY	
			ST-RX810-R-LE	ST-RX810-L-LE
1	Y0E098020	Right hand name plate R and fixing screw	A	
	Y0E198010	Left hand name plate L and fixing screw		A
2	Y63X80000	Main lever support R	A	
	Y63X80010	Main lever support L		A
3	Y0E098030	Clamp band unit diameter (23.8 - 24.2 mm)	A	A
4	Y0C698030	Bleed screw and O-ring	A	A
5	Y07X75000	SL cable guide R	A	
	Y07V75000	SL cable guide L		A
6	Y00E75000	SL cable cover R	A	
	Y0C574000	SL cable cover L		A
7	Y0C698040	Right hand unit cover R and fixing screw	A	
	Y0C598020	Left hand unit cover L and fixing screw		A
8	Y0JK98010	Bracket covers (pair)	A	A
9	Y0C514000	Joint support ring	A	A
10	Y63Z27000	Outer cap with short tongue for ST	A	A
11	Y63Z28000	Outer cap with long tongue	A	A
* 12	Y13000090	TL-BR002 Funnel unit for M7 screw	A	A
13	Y8ZG98090	OT-SP41 OPTISLICK shift cable sets black (OT-RS900 is included) • Outer cap with short tongue for ST (2 pcs.) • SIS-SP40 outer caps (3 pcs.) • SIS-SP40 sealed outer caps (1 pc.) • Inner end caps (2 pcs.)	A	A
	Y8ZG98100	OT-SP41 OPTISLICK shift cable sets white (OT-RS900 is included) • Outer cap with short tongue for ST (2 pcs.) • SIS-SP40 outer caps (3 pcs.) • SIS-SP40 sealed outer caps (1 pc.) • Inner end caps (2 pcs.)	A	A
	Y8ZG98110	OT-SP41 OPTISLICK shift cable sets red (OT-RS900 is included) • Outer cap with short tongue for ST (2 pcs.) • SIS-SP40 outer caps (3 pcs.) • SIS-SP40 sealed outer caps (1 pc.) • Inner end caps (2 pcs.)	A	A
	Y8ZG98120	OT-SP41 OPTISLICK shift cable sets high-tech gray (OT-RS900 is included) • Outer cap with short tongue for ST (2 pcs.) • SIS-SP40 outer caps (3 pcs.) • SIS-SP40 sealed outer caps (1 pc.) • Inner end caps (2 pcs.)	A	A
14	Y8RD02000	Flange flare nut (M9/black)	A	A
15	Y0C698060	Right hand lid unit	A	
	Y0C598030	Left hand lid unit		A
16	Y0C698070	Lid fixing screw (3 pcs.) and lid spacer (2 pcs.)	A	A
17	Y0C678000	Diaphragm R	A	
	Y0C578000	Diaphragm L		A

A: Same parts.

B: Parts are usable, but differ in materials, appearance, finish, size, etc.

Absence of mark indicates non-interchangeability.

Specifications are subject to change without notice.

Jun.-2022-4593C

© Shimano Inc. I

SHIMANO