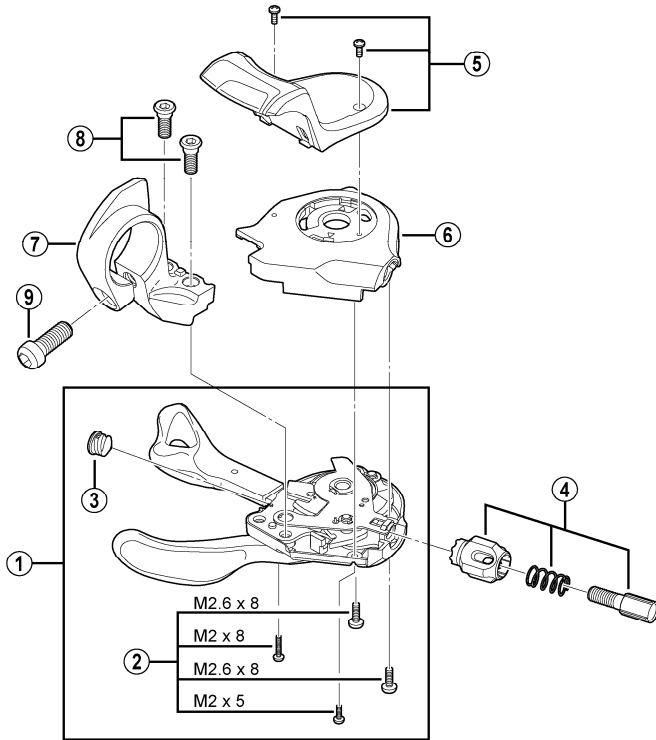
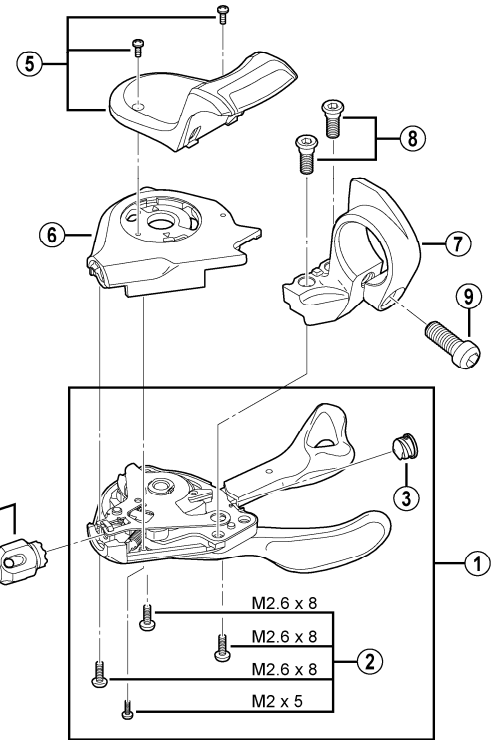


SHIMANO Rapidfire Lever
SL-R780-S Silver Version
SL-R780-L Black Version

For Left Hand



For Right Hand



SL-4600
 SL-M770-A

ITEM NO.	SHIMANO CODE NO.	DESCRIPTION	INTERCHANGEABILITY		
1	Y6UY98010	R.H. Shifting Lever Unit			
	Y6UZ98010	L.H. Shifting Lever Unit			
2	Y6UR98020	R.H. Base Cover Fixing Screw Unit	A	A	
	Y6US98020	L.H. Base Cover Fixing Screw Unit	A		
3	Y6CD33000	Inner Hole Cap	A	A	
4	Y6T898020	Cable Adjusting Bolt Unit			
5	Y6UY98020	R.H. Indicator Unit for SL-R780-S			
	Y6UZ98020	L.H. Indicator Unit for SL-R780-S			
	Y6UY98030	R.H. Indicator Unit for SL-R780-L			
	Y6UZ98030	L.H. Indicator Unit for SL-R780-L			
6	Y6UR02100	R.H. Base Cover for SL-R780-S			
	Y6US52100	L.H. Base Cover for SL-R780-S			
	Y6UR02110	R.H. Base Cover for SL-R780-L			
	Y6US52110	L.H. Base Cover for SL-R780-L			
7	Y6MP01700	R.H. Bracket for SL-R780-S			
	Y6NX51700	L.H. Bracket for SL-R780-S			
	Y6MP01710	R.H. Bracket for SL-R780-L			
	Y6NX51710	L.H. Bracket for SL-R780-L			
8	Y6MP98080	SL Fixing Bolt (M4) 2pcs.	A	A	
9	Y8U914000	Clamp Bolt (M6 x 15)	A	A	

A: Same parts.

B: Parts are usable, but differ in materials, appearance, finish, size, etc.

Absence of mark indicates non-interchangeability.

May.-2011-3220

© Shimano Inc. A

Specifications are subject to change without notice.

SHIMANO