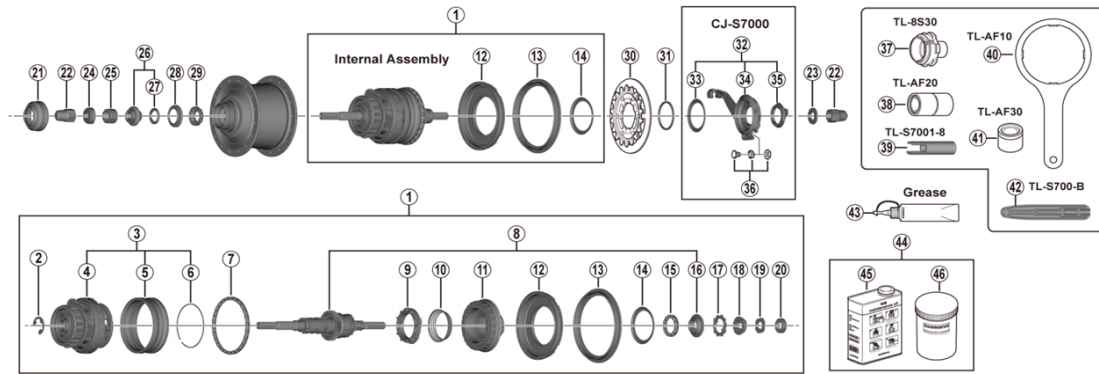


ALFINE 8-speed Internal Hub SG-S7000-8



SG-S7001

ITEM NO.	SHIMANO CODE NO.	DESCRIPTION	INTERCHANGEABILITY	
1	Y31L98010	Internal Assembly (Axle Length 187 mm)		
2	Y34R79000	Stop Ring Diameter (12 mm / 1.0 mm)	A	
	Y34R79010	Stop Ring Diameter (12 mm / 1.3 mm)	A	
	Y34R79020	Stop Ring Diameter (12 mm / 1.6 mm)	A	
3	Y36W98020	Ring Gear Unit	A	
4	Y36W98030	Carrier Unit	A	
5	Y36W07000	Ring Gear 1	A	
6	Y34R80000	Ring Gear 1 Stop Ring	A	
7	Y34R98030	Ball Retainer O (3/16" x 26)	A	
8	Y31L98020	Hub Axle Unit (Axle Length 187 mm) & Right Hand Cone w/Seal		
9	Y34R98050	Clutch Unit	A	
10	Y34R21000	Return Spring A		
11	Y37L98020	Driver Unit	A	
12	Y35Z98050	Right Hand Dust Cap A w/Seal	A	
13	Y35Z20000	Chain Guard	A	
14	Y34R0E000	Right Hand Dust Cap B	A	
15	Y34R98070	Ball Retainer P (3/16" x 13)	A	
16	Y37J98080	Right Hand Cone w/Seal	A	
17	Y31L04000	Driver Plate		
18	Y31L98030	Lock Washer		
19	Y34R09000	Stop Washer	A	
20	Y35Z11000	Right Hand Serated Lock Nut (5.4 mm)	A	
21	Y24Z02000	Rotor Mount Cover	A	
22	Y72A01000	Cap Nut (3/8")	A	
23	Y33Z20500	Non-turn Washer 5R (Yellow)	A	
	Y33M39600	Non-turn Washer 6R (Silver)	A	
	Y33M39700	Non-turn Washer 7R (Black)	A	
	Y34R85010	Non-turn Washer 8R (Dark Blue)	A	
24	Y33M39510	Non-turn Washer 5L (Brown)	A	
	Y33M39610	Non-turn Washer 6L (White)	A	
	Y33M39710	Non-turn Washer 7L (Gray)	A	
	Y34R85000	Non-turn Washer 8L (Dark Green)	A	
25	Y35Z19000	Left Hand Serated Lock Nut (10.7 mm)	A	
26	Y31L98040	Left Hand Cone w/Dust Cap & Seal Ring	A	
27	Y37710000	Seal Ring	A	
28	Y32T08100	Left Hand Inner Dust Cap	A	
29	Y36U98030	Ball Retainer (7/32" x 9)	A	
30	Y1ZN98010	Sprocket Wheel 18T w/Guard Plate (CS-S500)	A	
	Y1ZN98020	Sprocket Wheel 20T w/Guard Plate (CS-S500)	A	
31	Y32120100	Snap Ring C	A	
32	Y7ZR98010	CJ-S7000 Cassette Joint Unit		
33	Y74Y18000	Driver Cap	A	
34	Y7ZR98020	CJ-S7000 Cassette Joint		
35	Y33Z98020	Cassette Joint Fixing Ring	A	
36	Y6TV98070	Inner Cable Fixing Bolt Unit		
37	Y70800300	TL-8S30 Carrier Unit Tool		
38	Y70810000	TL-AF20 Right Hand Cone Installation Tool	A	
39	Y70820000	TL-S7001-8 Right Hand Cone Removal Tool		
40	Y32010000	TL-AF10 Right Hand Dust Cap A Installation Tool	A	
41	Y70811000	TL-AF30 Left Hand Inner Dust Cap Installation Tool	A	
42	Y72A06000	TL-S700-B Inner Cable Fixing Bolt Installation Tool		
43	Y04120800	Internal Hub Grease (Net. 100g)	A	
44	Y00298010	WB maintenance oil set	A	
45	Y00201000	WB maintenance oil (1L)	A	
46	Y00201100	Bottle	A	
-	Y35Z07010	Right Hand Hub Cup	A	

A: Same parts.

B: Parts are usable, but differ in materials, appearance, finish, size, etc.

Absence of mark indicates non-interchangeability.

Specifications are subject to change without notice.

Jul.-2018-3810A

© Shimano Inc. I

SHIMANO