

SHIMANO

SHIMANO (EUROPA) GmbH.
Kleinhülsen 1-3 4010 Hilden, Germany
Tel. 02103-5005-0

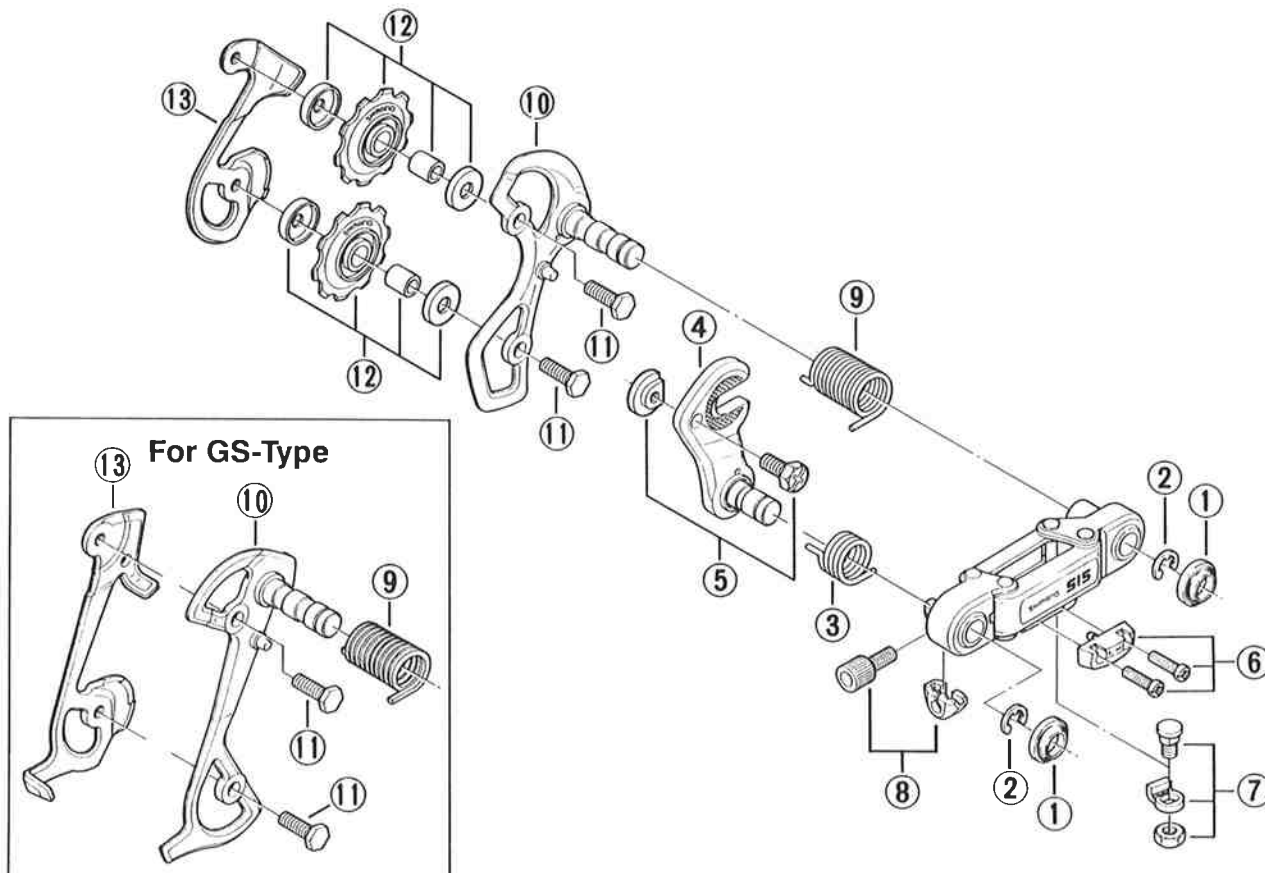
SHIMANO AMERICAN CORPORATION
One Shimano Drive, P.O. Box 19615, Irvine,
California U.S.A. 92718 Tel. (714) 951-5003

Small parts list for after market.

- You may photocopy this sheet and use it as an order form.
- Sie können dieses Blatt kopieren und als Bestellformular verwenden.
- Vous pouvez photocopier cette feuille et l'utiliser comme bon de commande.
- Dit blad kan gecopieerd en als bestelformulier gebruikt worden.
- Potete fotocopiare questo foglio e usarlo come modulo di commissione.

RD-TY15-SS Rear Derailleur Short Cage

RD-TY15-GS Rear Derailleur Long Cage



Q'TY	ITEM NO.	PART NO.	DESCRIPTION
	1	526 4500	Axle Cap
	2	521 3001	Stop Ring (ø6mm)
	3	54Y 2412	B-Tension Spring
	4	54S 9801	Adapter w/Mounting Shaft
	5	525 9801	Adapter Screw (M5 x 11.5) & Nut
	6	521 9823	Stroke Adjusting Screws (M4 x 14.5) & Plate
	7	54Y 9806	Cable Fixing Bolt Unit
	8	54S 9802	Cable Adjusting Barrel & Plate
	9	54Y 2411	P-Tension Spring (SS-Type)
		522 2800	P-Tension Spring (GS-Type)
	10	54S 9803	Outer Plate w/Mounting Shaft (SS-Type)
		54S 9804	Outer Plate w/Mounting Shaft (GS-Type)
	11	524 7200	Pulley Bolt (M5 x 15.4) SS-Type
		54Y 2500	Pulley Bolt (M5 x 16.1) GS-Type
	12	563 9839	Pulley Unit
		539 2201	Inner Plate (SS-Type)
	13	511 0402	Inner Plate (GS-Type)