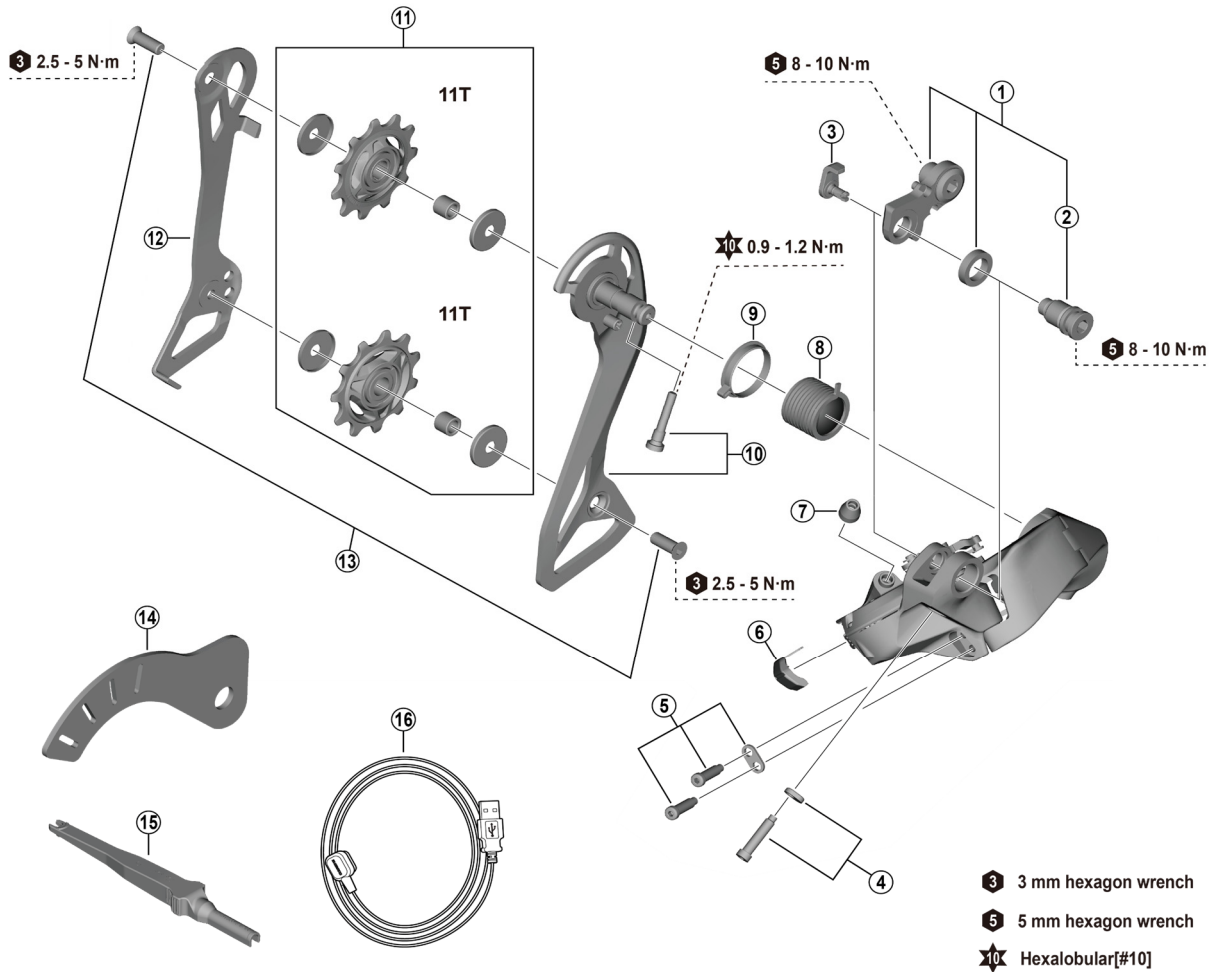


# SHIMANO 105 Rear Derailleur RD-R7150 (12-speed)



- 3 mm hexagon wrench
- 5 mm hexagon wrench
- Hexalobular[#10]

ITEM NO.	SHIMANO CODE NO.	DESCRIPTION	INTERCHANGEABILITY	
			RD-R8150	RD-R7100
1	Y3HY98020	Mounting screw unit		A
2	Y3HY9801T	B-Axle		A
3	Y3GK51000	Stay cable	A	
4	Y3HY98050	End adjusting screw and plate		
5	Y3HY98030	Stroke adjusting screws and plate		
6	Y3J145000	Charger cover	A	
7	Y3GK89000	Boot	A	
8	Y5PV17000	Plate tension spring	A	A
9	Y5PU130T0	P-seal ring	A	
10	Y3HY98040	Outer plate and fixing screw		
11	Y3HY98010	Tension and guide pulley set	B	
*	Y3JU98030	Tension and guide pulley set (used for RD-R7100)		A
12	Y3HY9802T	Inner plate		
13	Y5V598140	Pulley screw (2 pcs.)	B	A
14	Y3K49801T	G-pulley setting tool		A
15	Y7HE40000	TL-EW300 Plug tool	A	
16	IEWEC300A	EW-EC300 Charging cable	A	

A: Same parts.

B: Parts are usable, but differ in materials, appearance, finish, size, etc.

Absence of mark indicates non-interchangeability.

Specifications are subject to change without notice.

Torque information is listed.

Oct.-2024-4927C

© Shimano Inc. I

## SHIMANO

