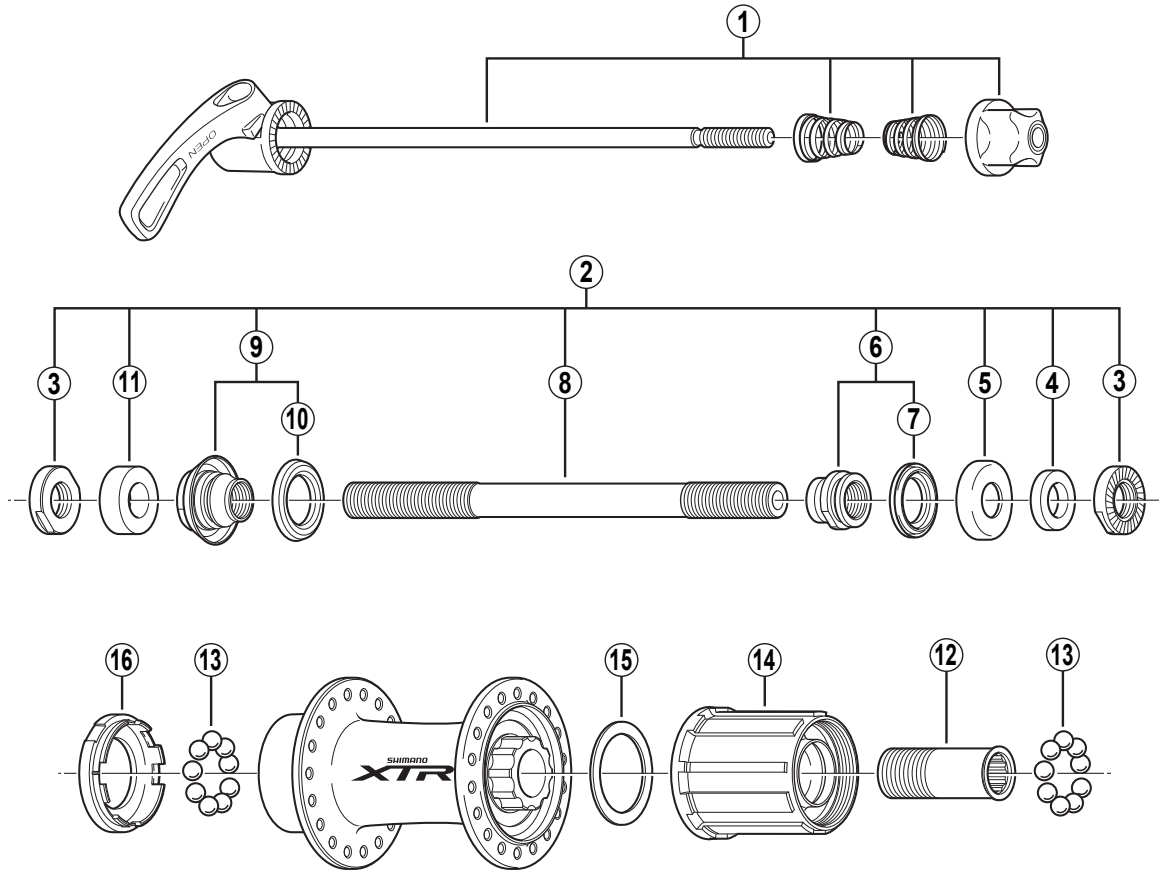


SHIMANO XTR Freehub
FH-M960 9-Speed



• Use with CS-M960.

Q'TY	ITEM NO.	SHIMANO CODE NO.	DESCRIPTION
	* 1	Y-3BY 98010	Complete Quick Release 168 mm (6-5/8")
		Y-3BY 98050	Complete Quick Release 173 mm (6-13/16")
	2	Y-3BY 98020	Complete Hub Axle 146 mm (5-3/4")
	3	Y-32P 08000	Serrated Lock Nut 4 mm
	4	Y-3BY 12000	Right Hand Axle Spacer B 3.4 mm
	5	Y-3A0 05000	Right Hand Dust Cap
	6	Y-3BY 98030	Right Hand Cone (M10 x 12.5 mm) & Seal Ring
	7	Y-214 06000	Right Hand Seal Ring
	8	Y-32T 09000	Hub Axle 146 mm (5-3/4")
	9	Y-32T 98040	Left Hand Cone (M10 x 16 mm) w/Dust Cover & Seal Ring
	10	Y-377 10000	Left Hand Seal Ring
	11	Y-3BY 11000	Left Hand Axle Spacer A 6.7 mm
	12	Y-3BY 09000	Body Fixing Bolt
	13	Y-000 91370	Stainless Ball (1/4") 18 pcs.
	14	Y-3BY 98040	Complete Freewheel Body w/Right Hand Dust Cap
	15	Y-3BY 10000	Freewheel Body Washer
	16	Y-3BY 13000	Left Hand Cap

Over Lock Nut Dimension: 135 mm (5-5/16")