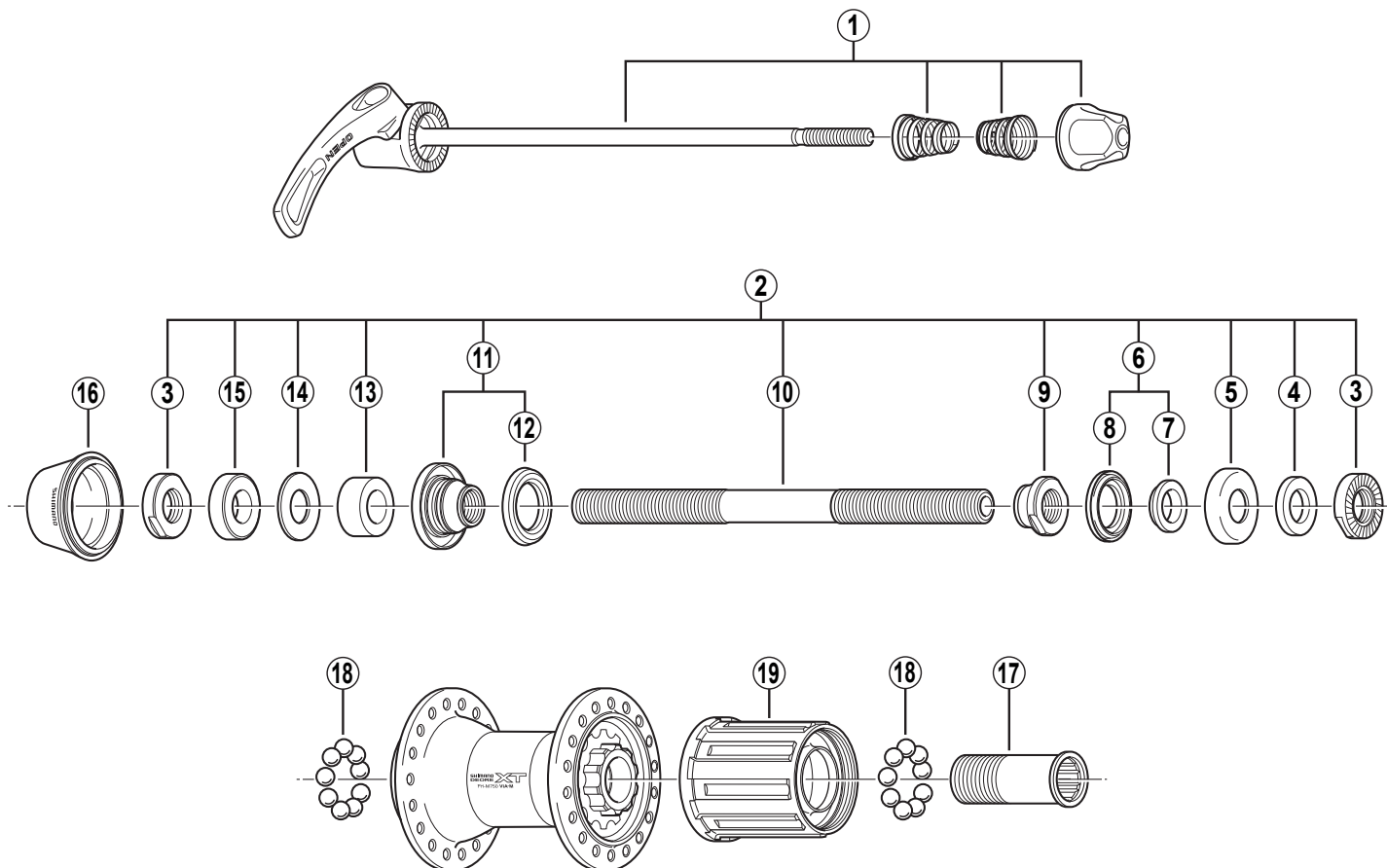


DEORE XT Freehub  
**FH-M750-N** 9-Speed



• Use with CS-M750.

Q'TY	ITEM NO.	SHIMANO CODE NO.	DESCRIPTION
	* 1	Y-32P 90300	Complete Quick Release 168 mm (6-5/8")
		Y-3BC98040	Complete Quick Release 173 mm (6-13/16")
	2	Y-3BC98020	Complete Hub Axle 146 mm (5-3/4")
	3	Y-32P 08000	Serated Lock Nut 4 mm
	4	Y-301 06100	Right Hand Washer 2.3 mm
	5	Y-3A0 05100	Right Hand Dust Cap
	6	Y-32X 98020	Right Hand Axle Spacer & Seal Ring
	7	Y-31V 03000	Right Hand Axle Spacer 3.7 mm
	8	Y-214 06000	Right Hand Seal Ring
	9	Y-32P 09000	Right Hand Cone M10 x 9 mm
	10	Y-360 19209	Hub Axle 146 mm (5-3/4")
	11	Y-32P 98030	Left Hand Cone (M10 x 16 mm) w/Dust Cover & Seal Ring
	12	Y-377 10000	Left Hand Seal Ring
	13	Y-3BC04000	Left Hand Axle Spacer 8 mm
	14	Y-3AC09000	Left Hand Washer 0.5 mm
	15	Y-3AC08010	Left Hand Axle Spacer 5 mm
	16	Y-3AC04000	Rubber Seal
	17	Y-3BL 03000	Body Fixing Bolt
	18	Y-000 91310	Steel Ball (1/4") 18 pcs.
	19	Y-3BC98030	Complete Freewheel Body w/Right Hand Dust Cap

Over Lock Nut Dimension: 135 mm (5-5/16")