



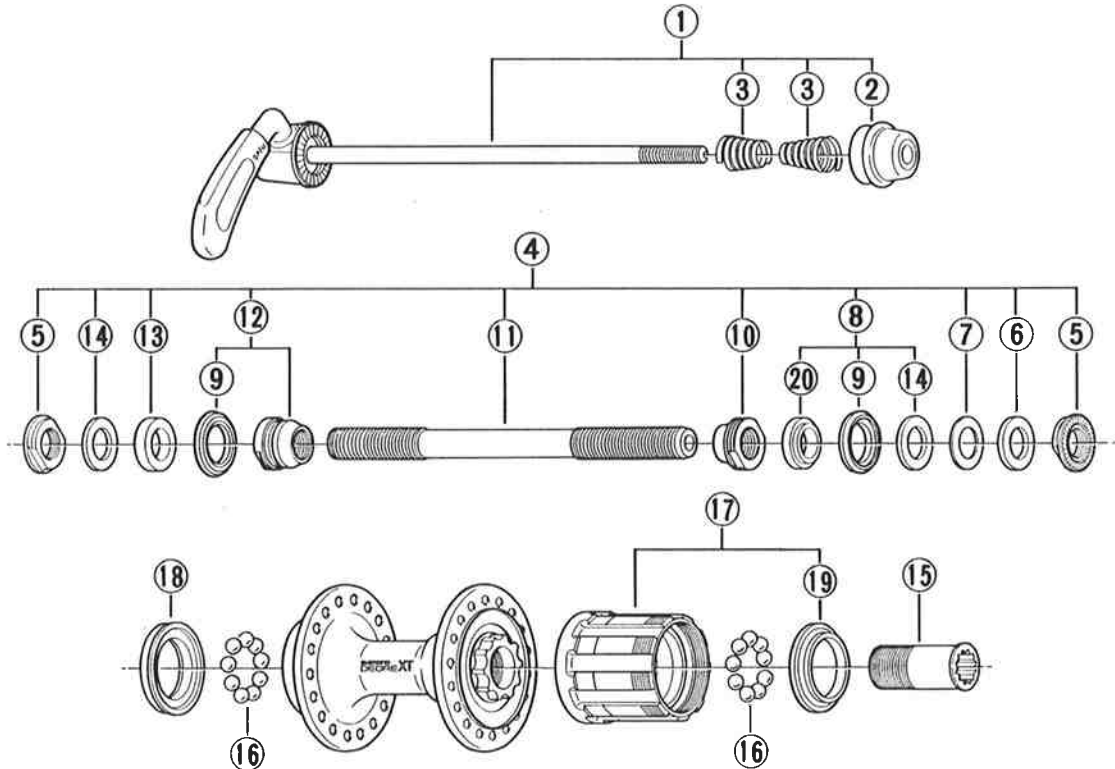
**SHIMANO (EUROPA) GmbH.**  
Kleinhülsen 1-3 4010 Hilden,  
West Germany Tel. 02103-5005-0

**SHIMANO AMERICAN CORPORATION**  
One Shimano Drive, P.O. Box 19615, Irvine,  
California U.S.A. 92718 Tel. (714) 951-5003

## Small parts list for after market.

- You may photocopy this sheet and use it as an order form.
- Sie können dieses Blatt kopieren und als Bestellformular verwenden.
- Vous pouvez photocopier cette feuille et l'utiliser comme bon de commande.
- Dit blad kan gecopieerd en als bestelformulier gebruikt worden.
- Potete fotocopiare questo foglio e usarlo come modulo di commissione.

### FH-M732-QR Freehub DEORE XT-II / Quick Release Type / 7-Speed



● Use with CS-HG70 or CS-HG50.

O.L.: Over Lock Nut Dimension

Q'TY	ITEM NO.	PART NO.	DESCRIPTION
	1	375 9803	Complete Quick Release 161mm for O.L. 130mm
		375 9809	Complete Quick Release 166mm for O.L. 135mm
	2	375 9061	Nut for Skewer
	3	231 1100	Volute Spring
	4	375 9811	Complete Hub Axle 141mm for O.L. 130mm
		375 9810	Complete Hub Axle 146mm for O.L. 135mm
	5	32A 0700	Lock Nut 4mm
	6	301 0630	Right Hand Washer 1.9mm
	7	220 0431	Right Hand Washer 0.5mm
	8	380 9020	Right Hand Axle Spacer Unit 5.5mm
	9	377 1000	Seal Ring
	10	381 0600	Right Hand Cone M10 x 9mm
	11	360 1910-9	Hub Axle 141mm for O.L. 130mm
		360 1920-9	Hub Axle 146mm for O.L. 135mm
	12	378 9805	Left Hand Cone (M10 x 13.5mm) & Seal Ring
	13	220 0460	Left Hand Axle Spacer 4mm
	14	301 0620	Washer 1mm
	15	359 0400	Freewheel Body Fixing Bolt
	16	000 9131	Steel Ball (1/4") 18pcs.
	17	32A 9801	Complete Freewheel Body w/Right Hand Dust Cap
	18	32A 9802	Left Hand Dust Cap
	* 19	32E 0300	Right Hand Dust Cap
	20	31B 0400	Right Hand Axle Spacer 4.5mm



**SHIMANO (EUROPA) GmbH.**

Kleinhülsen 1-3 4010 Hilden,  
West Germany Tel. 02103-5005-0

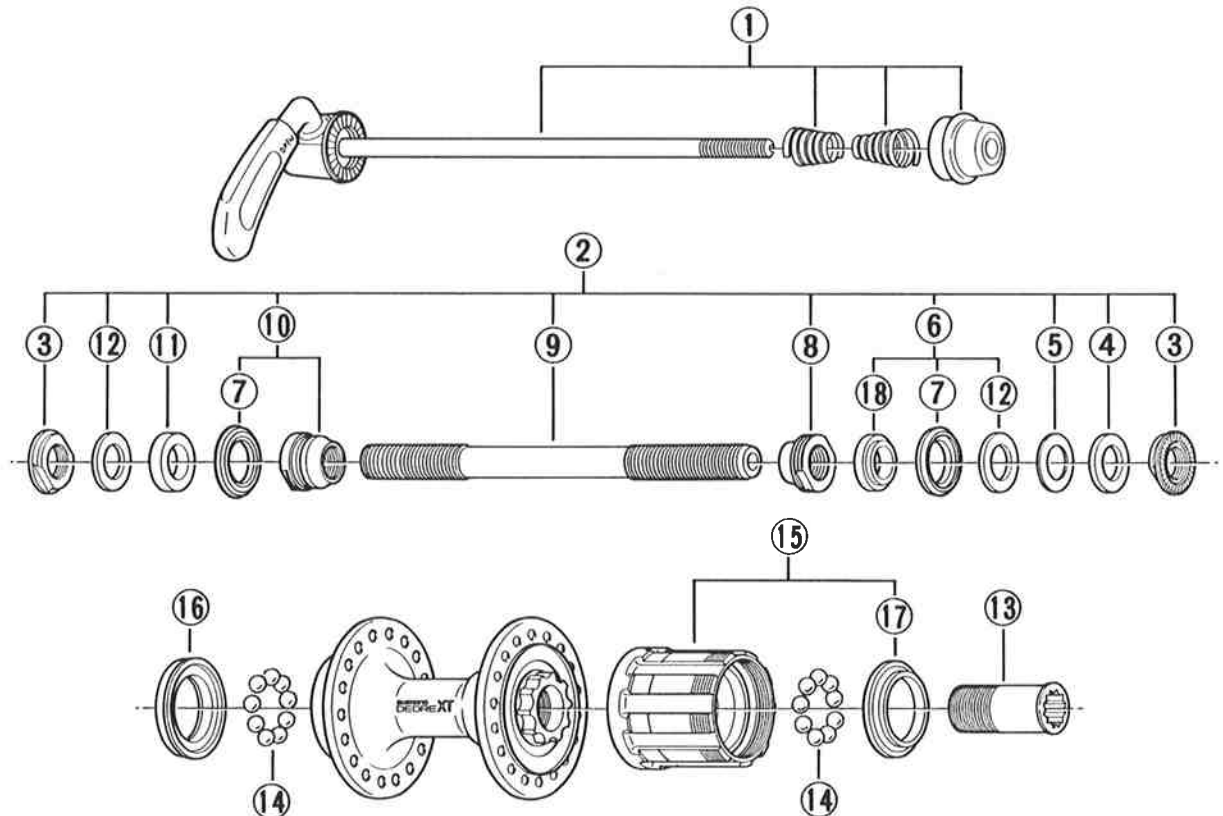
**SHIMANO AMERICAN CORPORATION**

One Shimano Drive, P.O. Box 19615, Irvine,  
California U.S.A. 92718 Tel. (714) 951-5003

## Small parts list for after market.

- You may photocopy this sheet and use it as an order form.
- Sie können dieses Blatt kopieren und als Bestellformular verwenden.
- Vous pouvez photocopier cette feuille et l'utiliser comme bon de commande.
- Dit blad kan gecopieerd en als bestelformulier gebruikt worden.
- Potete fotocopiare questo foglio e usarlo come modulo di commissione.

### FH-M732-QR Freehub DEORE XT-II / Quick Release Type / 7-Speed



• Use with CS-HG70 or CS-HG50.

O.L.: Over Lock Nut Dimension

Q'TY	ITEM NO.	PART NO.	DESCRIPTION
	1	375 9803	Complete Quick Release 161mm(6-11/32") for O.L. 130mm(5-1/8")
		375 9809	Complete Quick Release 166mm(6-17/32") for O.L. 135mm(5-5/16")
	2	375 9811	Complete Hub Axle 141mm(5-9/16") for O.L. 130mm(5-1/8")
		375 9810	Complete Hub Axle 146mm(5-3/4") for O.L. 135mm(5-5/16")
	3	32A 0700	Lock Nut 4mm
	4	301 0630	Right Hand Washer 1.9mm
	5	220 0431	Right Hand Washer 0.5mm
	6	380 9020	Right Hand Axle Spacer Unit 5.5mm
	7	377 1000	Seal Ring
	8	381 0600	Right Hand Cone M10 x 9mm
	9	360 1910-9	Hub Axle 141mm(5-9/16") for O.L. 130mm(5-1/8")
		360 1920-9	Hub Axle 146mm(5-3/4") for O.L. 135mm(5-5/16")
	10	378 9805	Left Hand Cone (M10 x 13.5mm) & Seal Ring
	11	220 0460	Left Hand Axle Spacer 4mm
	12	301 0620	Washer 1mm
	13	359 0400	Freewheel Body Fixing Bolt
	14	—	Steel Ball (1/4") 9pcs.
	15	32A 9801	Complete Freewheel Body w/Right Hand Dust Cap
	16	32A 9802	Left Hand Dust Cap
	*17	32E 0300	Right Hand Dust Cap
	18	31B 0400	Right Hand Axle Spacer 4.5mm