



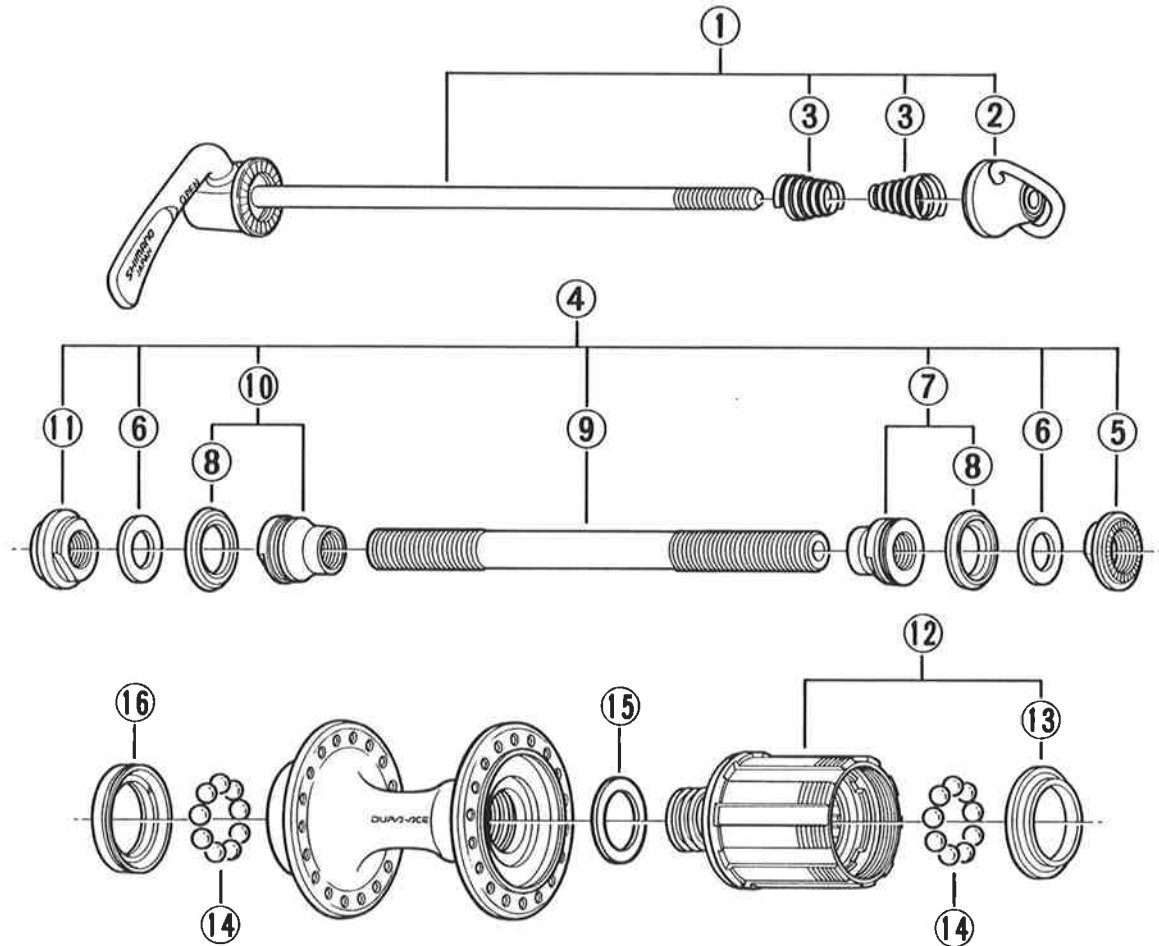
SHIMANO (EUROPA) GmbH.
Kleinhülsen 1-3 4010 Hilden,
West Germany Tel. 02103-5005-0

SHIMANO AMERICAN CORPORATION
One Shimano Drive, P.O. Box 19615, Irvine,
California U.S.A. 92718 Tel. (714) 951-5003

Small parts list for after market.

- You may photocopy this sheet and use it as an order form.
- Sie können dieses Blatt kopieren und als Bestellformular verwenden.
- Vous pouvez photocopier cette feuille et l'utiliser comme bon de commande.
- Dit blad kan gecopieerd en als bestelformulier gebruikt worden.
- Potete fotocopiare questo foglio e usarlo come modulo di commissione.

FH-7403 Freehub DURA-ACE/8-Speed



● Use with CS-7401.

Over Lock Nut Dimension: 130mm

Q'TY	ITEM NO.	PART NO.	DESCRIPTION
	1	240 9822	Complete Quick Release 161mm
	2	216 9835	Nut for Skewer
	3	233 2100	Volute Spring
	4	354 9806	Complete Hub Axle 141mm
	* 5	33A 0300	Right Hand Lock Nut 4.6mm
	6	354 1310	Washer 1.2mm
	7	354 9804	Right Hand Cone (M10 x 14mm) & Seal Ring
	8	377 1000	Seal Ring
	9	360 1910-9	Hub Axle 141mm
	10	354 9805	Left Hand Cone (M10 x 16mm) & Seal Ring
	11	354 1200	Left Hand Lock Nut 9.2mm
	12	33A 9801	Complete Freewheel Body (B.C. 34.6) w/Right Hand Dust Cap
	13	32E 0300	Right Hand Dust Cap
	14	000 9137	Steel Ball (1/4") 18pcs.
	15	356 5800	Freewheel Body Washer
	16	354 9803	Left Hand Dust Cap



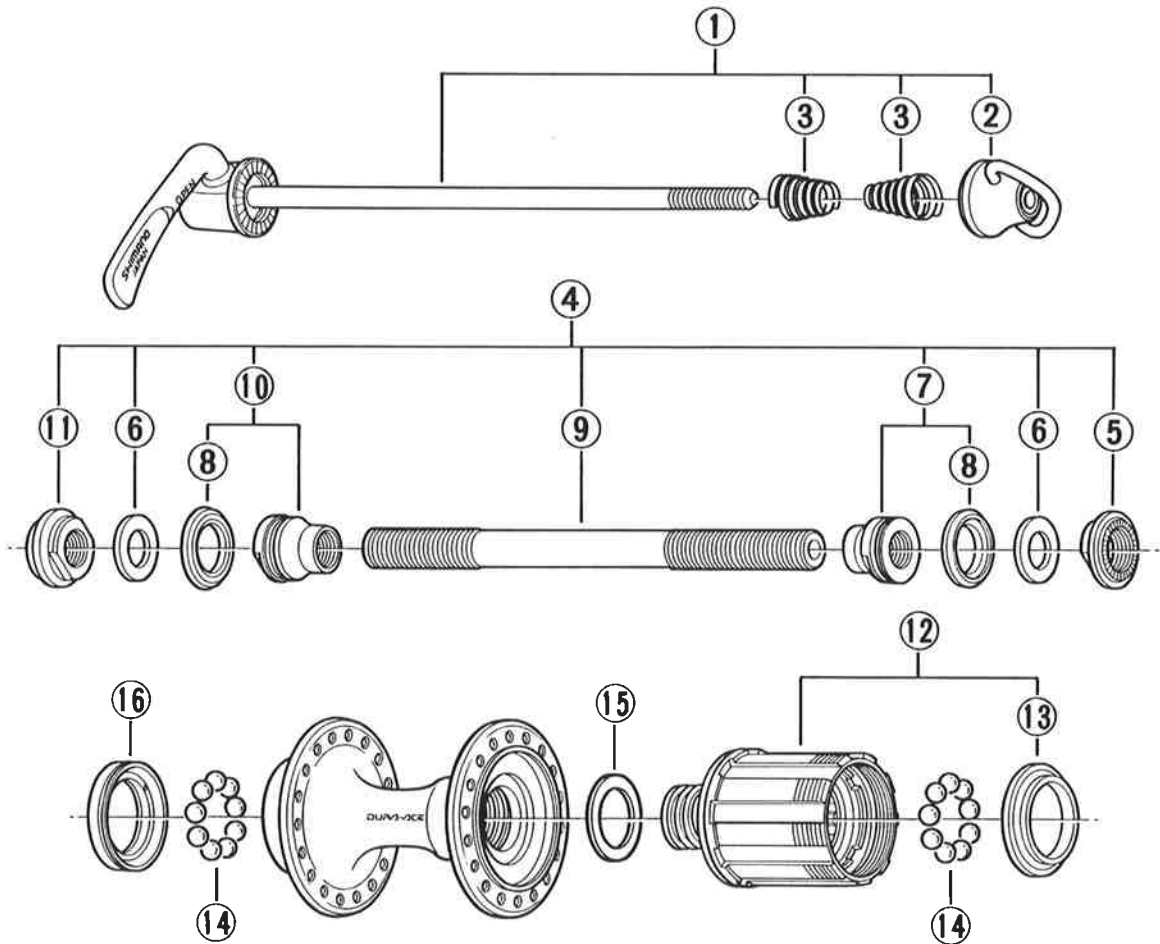
SHIMANO (EUROPA) GmbH.
Kleinhülsen 1-3 4010 Hilden,
West Germany Tel. 02103-5005-0

SHIMANO AMERICAN CORPORATION
One Shimano Drive, P.O. Box 19615, Irvine,
California U.S.A. 92718 Tel. (714) 951-5003

Small parts list for after market.

- You may photocopy this sheet and use it as an order form.
- Sie können dieses Blatt kopieren und als Bestellformular verwenden.
- Vous pouvez photocopier cette feuille et l'utiliser comme bon de commande.
- Dit blad kan gecopieerd en als bestelformulier gebruikt worden.
- Potete fotocopiare questo foglio e usarlo come modulo di commissione.

FH-7403 Freehub DURA-ACE/8-Speed



● Use with CS-7401.

Over Lock Nut Dimension: 130mm(5-1/8")

Q'TY	ITEM NO.	PART NO.	DESCRIPTION
	1	240 9822	Complete Quick Release 161mm(6-11/32")
	2	216 9835	Nut for Skewer
	3	233 2100	Volute Spring
	4	354 9806	Complete Hub Axle 141mm(5-9/16")
	* 5	33A 0300	Right Hand Lock Nut 4.6mm
	6	354 1310	Washer 1.2mm
	7	354 9804	Right Hand Cone (M10 x 14mm) & Seal Ring
	8	377 1000	Seal Ring
	9	360 1910-9	Hub Axle 141mm(5-9/16")
	10	354 9805	Left Hand Cone (M10 x 16mm) & Seal Ring
	11	354 1200	Left Hand Lock Nut 9.2mm
	12	33A 9801	Complete Freewheel Body (B.C. 34.6) w/Right Hand Dust Cap
	13	32E 0300	Right Hand Dust Cap
	14	—	Steel Ball (1/4") 9pcs.
	15	356 5800	Freewheel Body Washer
	16	354 9803	Left Hand Dust Cap