



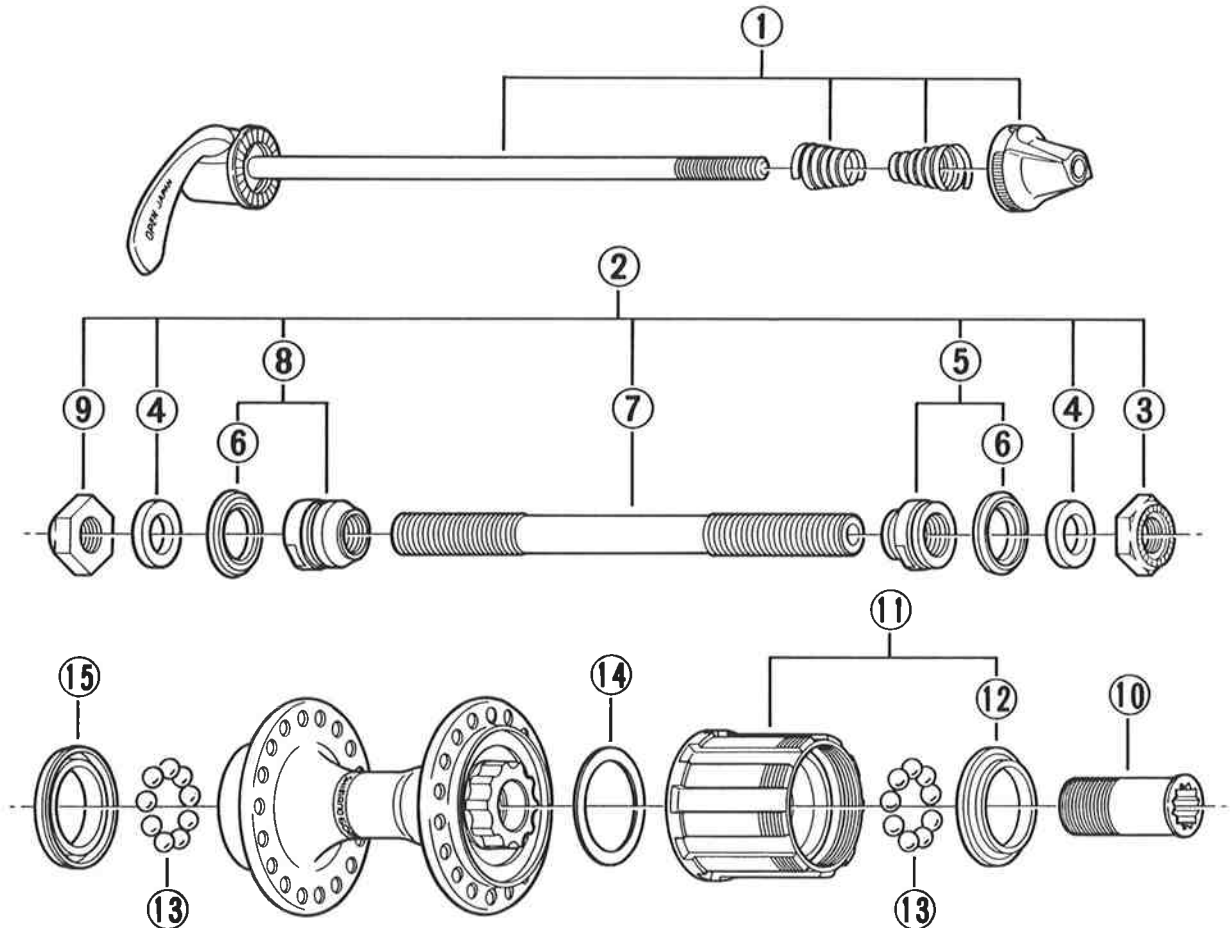
SHIMANO (EUROPA) GmbH.
Kleinhülsen 1-3 4010 Hilden,
West Germany Tel. 02103-5005-0

SHIMANO AMERICAN CORPORATION
One Shimano Drive, Irvine, California
U.S.A. 92718 Tel. (714) 951-5003

Small parts list for after market.

- You may photocopy this sheet and use it as an order form.
- Sie können dieses Blatt kopieren und als Bestellformular verwenden.
- Vous pouvez photocopier cette feuille et l'utiliser comme bon de commande.
- Dit blad kan gecopieerd en als bestelformulier gebruikt worden.
- Potete fotocopiare questo foglio e usarlo come modulo di commissione.

FH-6401 Freehub SHIMANO 600 Ultegra/7-Speed



• Use with CS-HG90.

Over Lock Nut Dimension: 126mm(4-31/32")

Q'TY	ITEM NO.	PART NO.	DESCRIPTION
	1	377 9803	Complete Quick Release 157mm(6-3/16")
	2	32Y 9802	Complete Hub Axle 137mm(5-13/32")
	3	220 0502-1	Right Hand Lock Nut 3.5mm
	4	301 0610	Washer 2.3mm
	5	377 9806	Right Hand Cone (M10x12mm) & Seal Ring
	6	377 1000	Seal Ring
	7	360 1900-9	Hub Axle 137mm(5-13/32")
	8	377 9807	Left Hand Cone (M10x15.5mm) & Seal Ring
	9	220 0501-1	Left Hand Lock Nut 4.5mm
	10	359 0400	Freewheel Body Fixing Bolt
	11	32Y 9801	Complete Freewheel Body w/Right Hand Dust Cap
	12	32E 0300	Right Hand Dust Cap
	13		Steel Ball (1/4") 9pcs.
	14	375 0400	Freewheel Body Dust Cap
	15	32Y 0300	Left Hand Dust Cap

Printed in Japan 8907-U1075



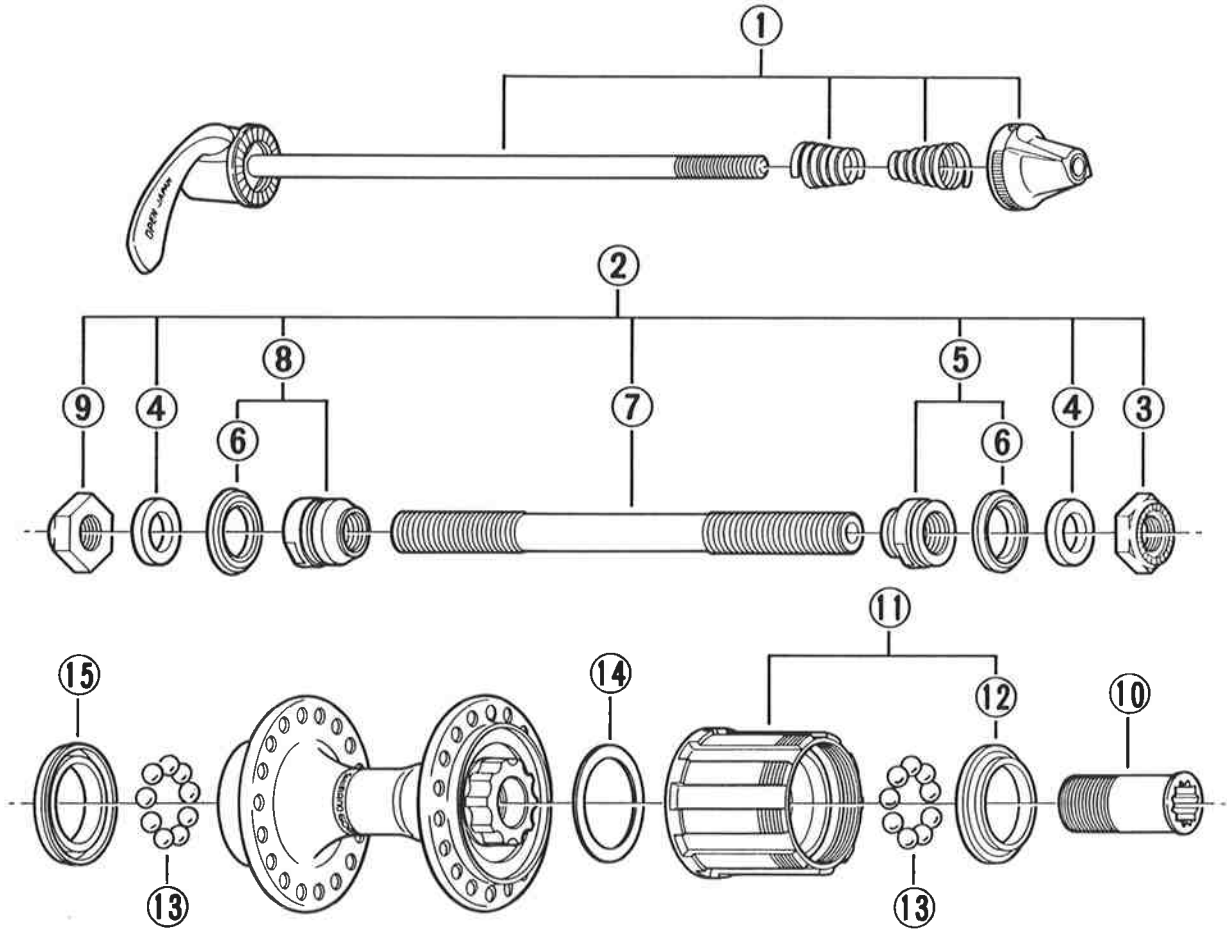
SHIMANO (EUROPA) GmbH.
Kleinhülsen 1-3 4010 Hilden,
West Germany Tel. 02103-5005-0

SHIMANO AMERICAN CORPORATION
One Shimano Drive, Irvine, California
U.S.A. 92718 Tel. (714) 951-5003

Small parts list for after market.

- You may photocopy this sheet and use it as an order form.
- Sie können dieses Blatt kopieren und als Bestellformular verwenden.
- Vous pouvez photocopier cette feuille et l'utiliser comme bon de commande.
- Dit blad kan gecopieerd en als bestelformulier gebruikt worden.
- Potete fotocopiare questo foglio e usarlo come modulo di commissione.

FH-6401 Freehub SHIMANO 600 Ultegra/7-Speed



• Use with CS-HG90.

Over Lock Nut Dimension: 126mm

	Q'TY	ITEM NO.	PART NO.	DESCRIPTION
		1	377 9803	Complete Quick Release 157mm
		2	32Y 9802	Complete Hub Axle 137mm
		3	220 0502-1	Right Hand Lock Nut 3.5mm
		4	301 0610	Washer 2.3mm
		5	377 9806	Right Hand Cone (M10x12mm) & Seal Ring
		6	377 1000	Seal Ring
		7	360 1900-9	Hub Axle 137mm
		8	377 9807	Left Hand Cone (M10x15.5mm) & Seal Ring
		9	220 0501-1	Left Hand Lock Nut 4.5mm
		10	359 0400	Freewheel Body Fixing Bolt
		11	32Y 9801	Complete Freewheel Body w/Right Hand Dust Cap
		12	32E 0300	Right Hand Dust Cap
		13	000 0131	Steel Ball (1/4") 18pcs.
		14	375 0400	Freewheel Body Dust Cap
		15	32Y 0300	Left Hand Dust Cap

Printed in Japan 8907-E1075