



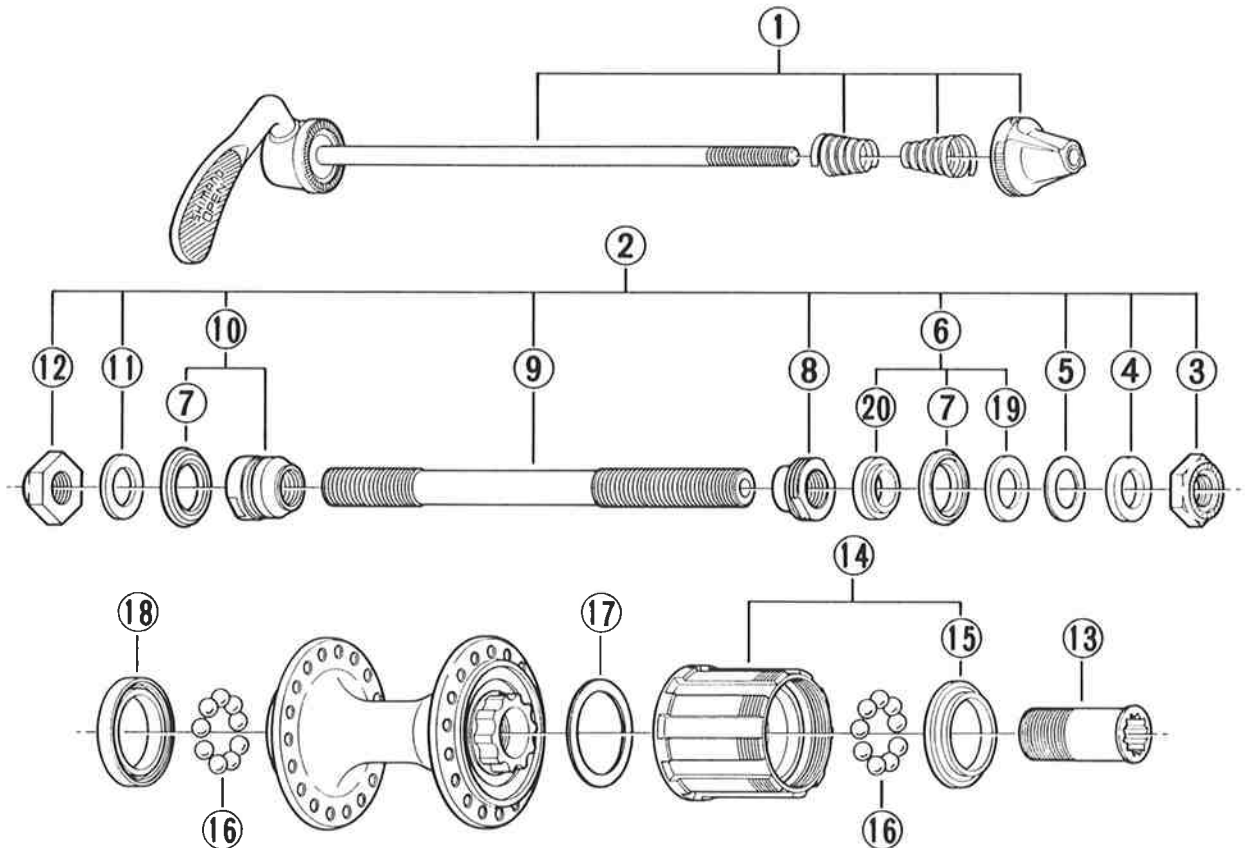
SHIMANO (EUROPA) GmbH.
Kleinhülsen 1-3 4010 Hilden,
West Germany Tel. 02103-5005-0

SHIMANO AMERICAN CORPORATION
One Shimano Drive, P.O. Box 19615, Irvine,
California U.S.A. 92718 Tel. (714) 951-5003

Small parts list for after market.

- You may photocopy this sheet and use it as an order form.
- Sie können dieses Blatt kopieren und als Bestellformular verwenden.
- Vous pouvez photocopier cette feuille et l'utiliser comme bon de commande.
- Dit blad kan gecopieerd en als bestelformulier gebruikt worden.
- Potete fotocopiare questo foglio e usarlo come modulo di commissione.

FH-1055 Freehub SHIMANO 105 / 7-Speed



• Use with CS-HG70 or CS-HG50.

Over Lock Nut Dimension: 126mm

Q'TY	ITEM NO.	PART NO.	DESCRIPTION
	1	301 9821	Complete Quick Release 159mm
	2	301 9820	Complete Hub Axle 137mm
	3	220 0502-1	Right Hand Lock Nut 3.5mm
	4	301 0610	Right Hand Washer 2.3mm
	5	220 0431	Right Hand Washer 0.5mm
	* 6	380 9020	Right Hand Axle Spacer Unit 5.5mm
	7	377 1000	Seal Ring
	8	369 0400	Right Hand Cone M10 x 9mm
	9	301 0500	Hub Axle 137mm
	10	377 9807	Left Hand Cone (M10 x 15.5mm) & Seal Ring
	11	301 0810	Left Hand Washer 1.2mm
	12	220 0501-1	Left Hand Lock Nut 4.5mm
	13	359 0400	Freewheel Body Fixing Bolt
	14	32E 9802	Complete Freewheel Body w/Right Hand Dust Cap
	15	32E 0300	Right Hand Dust Cap
	* 16	000 9131	Steel Ball (1/4") 18pcs.
	17	375 0400	Freewheel Body Dust Cap
	18	31B 9801	Left Hand Dust Cap
	* 19	301 0620	Washer 1mm
	* 20	31B 0400	Right Hand Axle Spacer 4.5mm



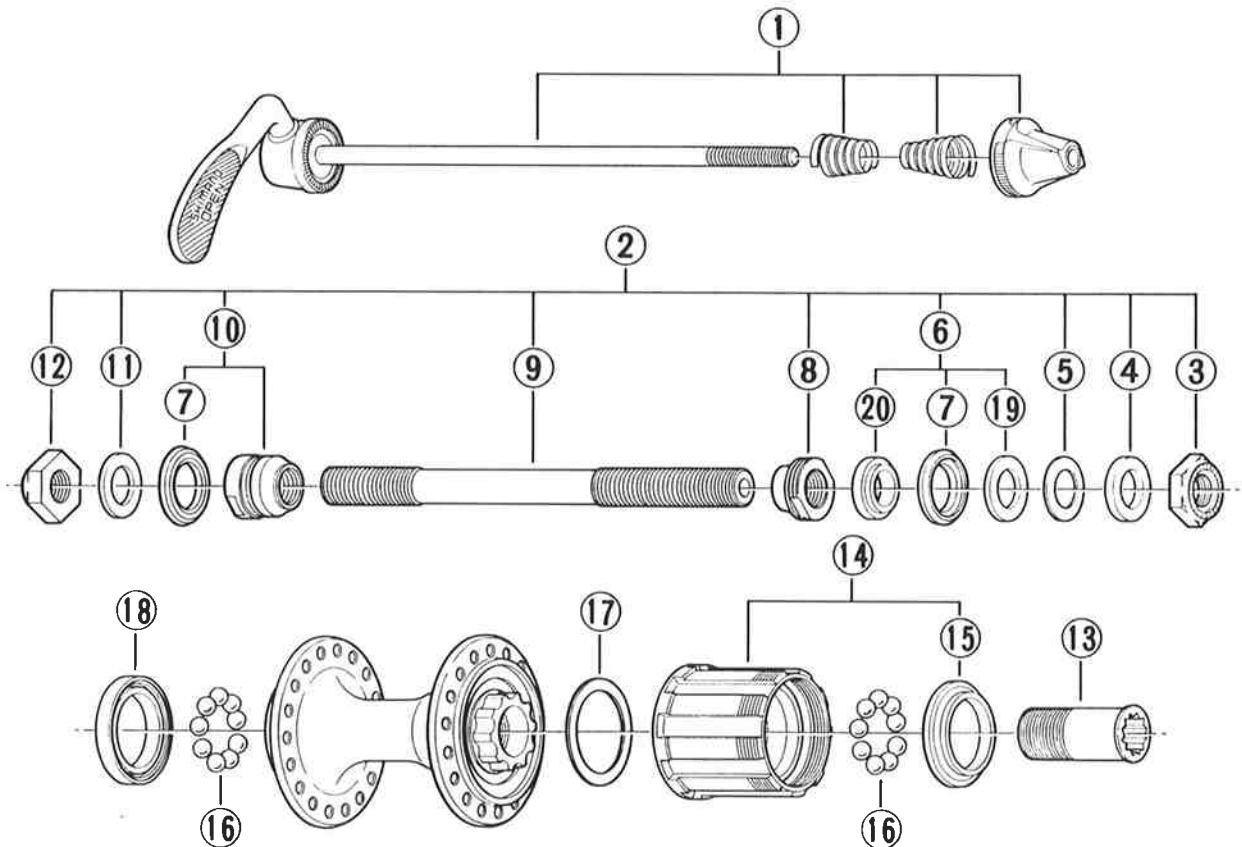
SHIMANO (EUROPA) GmbH.
Kleinhülsen 1-3 4010 Hilden,
West Germany Tel. 02103-5005-0

SHIMANO AMERICAN CORPORATION
One Shimano Drive, P.O. Box 19615, Irvine,
California U.S.A. 92718 Tel. (714) 951-5003

Small parts list for after market.

- You may photocopy this sheet and use it as an order form.
- Sie können dieses Blatt kopieren und als Bestellformular verwenden.
- Vous pouvez photocopier cette feuille et l'utiliser comme bon de commande.
- Dit blad kan gecopieerd en als bestelformulier gebruikt worden.
- Potete fotocopiare questo foglio e usarlo come modulo di commissione.

FH-1055 Freehub SHIMANO 105 / 7-Speed



● Use with CS-HG70 or CS-HG50.

Over Lock Nut Dimension: 126mm(4-31/32")

Q'TY	ITEM NO.	PART NO.	DESCRIPTION
	1	301 9821	Complete Quick Release 159mm(6-1/4")
	2	301 9820	Complete Hub Axle 137mm(5-13/32")
	3	220 0502-1	Right Hand Lock Nut 3.5mm
	4	301 0610	Right Hand Washer 2.3mm
	5	220 0431	Right Hand Washer 0.5mm
	* 6	380 9020	Right Hand Axle Spacer Unit 5.5mm
	7	377 1000	Seal Ring
	8	369 0400	Right Hand Cone M10 x 9mm
	9	301 0500	Hub Axle 137mm(5-13/32")
	10	377 9807	Left Hand Cone (M10 x 15.5mm) & Seal Ring
	11	301 0810	Left Hand Washer 1.2mm
	12	220 0501-1	Left Hand Lock Nut 4.5mm
	13	359 0400	Freewheel Body Fixing Bolt
	14	32E 9802	Complete Freewheel Body w/Right Hand Dust Cap
	15	32E 0300	Right Hand Dust Cap
	16	—	Steel Ball (1/4") 9pcs.
	17	375 0400	Freewheel Body Dust Cap
	18	31B 9801	Left Hand Dust Cap
	* 19	301 0620	Washer 1mm
	* 20	31B 0400	Right Hand Axle Spacer 4.5mm