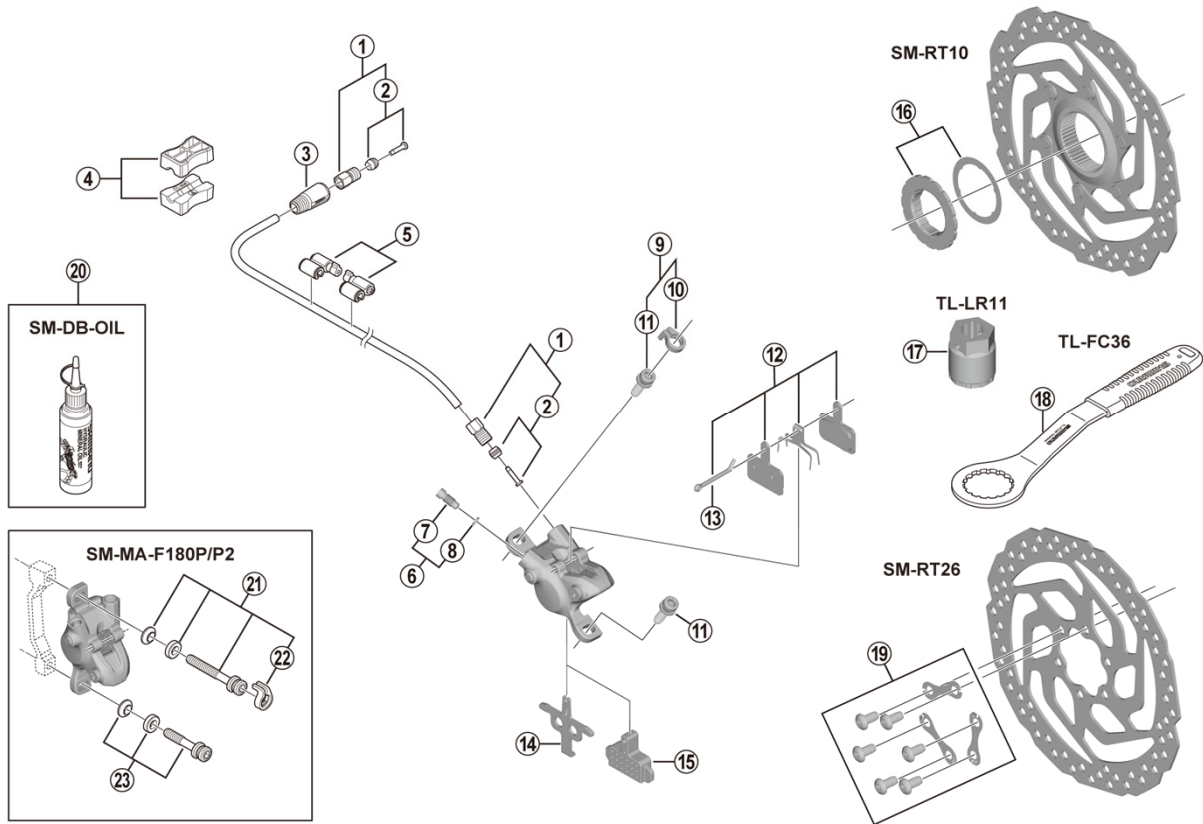


Disc Brake  
**BR-M315** Brake Caliper  
**SM-BH59** Brake Hose

**SM-RT10** Disc Rotor/Center Lock  
**SM-RT26** Disc Rotor/6-Bolt



BR-M315

ITEM NO.	SHIMANO CODE NO.	DESCRIPTION	INTERCHANGE-ABILITY
1	Y8AL98020	Flare Nut Unit	A
2	Y8H298040	Olive & Connector Insert	A
3	Y8H203210	Cover	A
4	Y8H198030	TL-BH61 Shimano original tool (2 pcs.)	A
5	Y83098040	SM-HANG Hose Supporter A & B	A
6	Y8VZ98010	Bleed Screw & O-Ring	A
7	Y8VZ07000	Bleed Screw	A
8	Y8B511000	O-Ring	A
*	Y2F398020	Caliper Fixing Screw (M6 x 18.7) & Snap Ring	A
*	Y2RT06000	Snap Ring	A
11	Y8C509020	Caliper Fixing Screw (M6 x 18.7)	A
*	EBPB01SRESINA	Resin Pad (B01S) & Spring w/Split Pin 3 Type	A
*	Y8DB06200	Split Pin	A
14	Y8PE03000	Pad Spacer	B
15	Y8FZ05000	Bleeding Spacer	A
16	Y8PW98020	Lock Ring & Washer	B
17	Y8PW04100	TL-LR11 Lock Ring Removal Tool	A
18	Y13098000	TL-FC36 Lock Ring Removal Tool	A
19	Y8NX98010	Rotor Fixing Screw & Lock Washer	A
*	Y83998020	Mineral Oil (100 ml)	A
*	Y83998030	Mineral Oil (500 ml)	A
*	Y2RT98020	Caliper Fixing Screw Unit (M6 x 37.9)	A
*	Y2RT07000	Snap Ring	A
23	Y8G498030	Caliper Fixing Screw Unit (M6 x 32.1)	A

A: Same parts.

B: Parts are usable, but differ in materials, appearance, finish, size, etc.

Absence of mark indicates non-interchangeability.

Specifications are subject to change without notice.

Jul.-2020-3985A

© Shimano Inc. I

**SHIMANO**