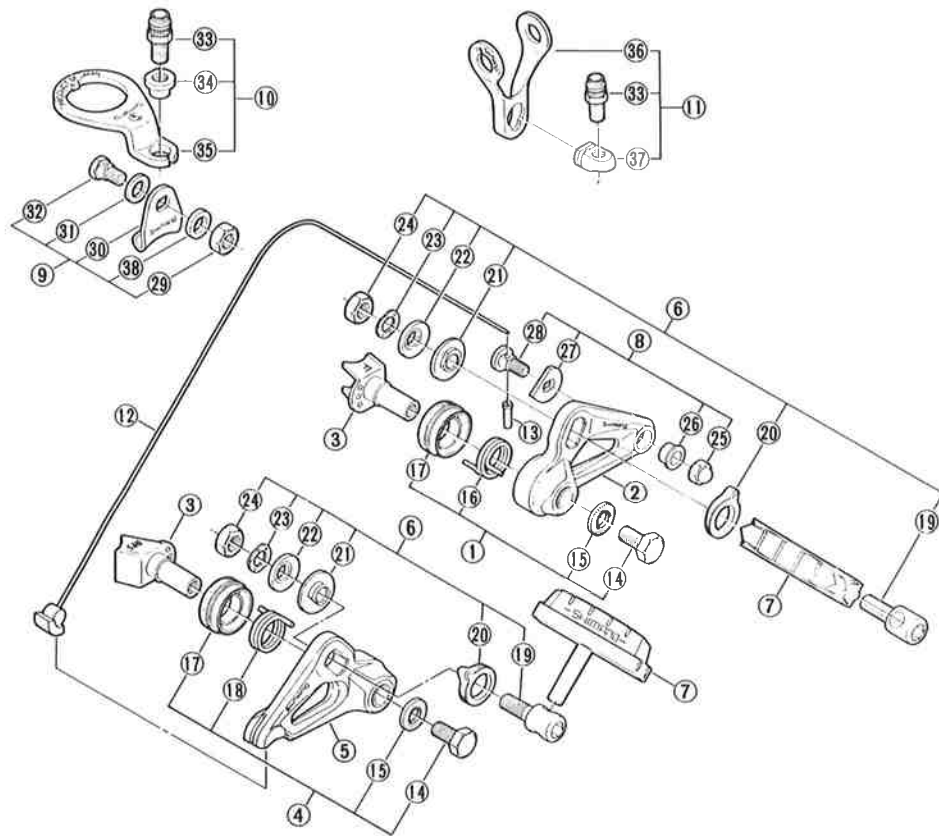


- You may photocopy this sheet and use it as an order form.
- Sie können dieses Blatt kopieren und als Bestellformular verwenden.
- Vous pouvez photocopier cette feuille et l'utiliser comme bon de commande.
- Dit blad kan gecopieerd en als bestelformulier gebruikt worden.
- Potete fotocopiare questo foglio e usarlo come modulo di commissione.

## BR-AT50 Cantilever Brake



ITEM NO.	PART NO.	DESCRIPTION	Q'TY
1	3-868 9801	Anchor Link Fixing Bolt Unit	
2	3-868 9802	Anchor Link w/Bush	
3	3-868 9030-1	Front Mounting Shaft for MTB (Radius 9.5mm)	
	3-868 9040-1	Rear Mounting Shaft for MTB (Radius 7.5mm)	
	3-861 9004-1	Front Mounting Shaft (Radius 8.5mm)	
	3-861 9005-1	Rear Mounting Shaft (Radius 5.5mm)	
4	3-868 9803	Hooking Link Fixing Bolt Unit	
5	3-868 9804	Hooking Link w/Bush	
6	3-868 9805	Brake Shoe Fixing Bolt Unit	
7	3-861 9806	Brake Shoe	
8	3-868 9806	Wire Fixing Bolt Unit	
9	3-831 9010	Cable Carrier Assembly	
10	3-831 9078	Front Cable Hanger Assembly	
11	3-831 9079	Rear Cable Hanger Assembly	
12	862 1401	Center Wire	
13	620 2011	Wire End Cap	
14	868 0800	Link Fixing Bolt	
15	868 0900	Link Fixing Washer	
16	861 5300	Return Spring for Anchor Link	
17	861 5500	Spring Cover	
18	861 5400	Return Spring for Hooking Link	
19	861 6100	Brake Shoe Fixing Bolt	
20	868 0300	Adjusting Washer	
21	868 0400	Spherical Spacer	
22	868 0500	Spherical Washer	
23	861 6300	Wave Washer	
*24	83A 2300	Brake Shoe Fixing Nut (M6)	
25	851 5201	Wire Fixing Nut (M5)	
26	868 0700	Spacer	
27	868 0600	Wire Fixing Plate	
28	851 5100	Wire Fixing Bolt	
29	831 0700	Cable Fixing Nut (M6)	
30	831 5200	Cable Carrier	
31	831 5400	Cable Fixing Washer 1.2mm	
32	831 5300	Cable Fixing Bolt	
33	3-831 9077	Cable Adjusting Barrel & Nut	
34	831 8500	Barrel Supporter (Front)	
35	831 6121	Front Cable Hanger	
36	831 6521	Rear Cable Hanger	
37	831 6403	Barrel Supporter (Rear)	
38	831 5410	Cable Fixing Washer 1.8mm	

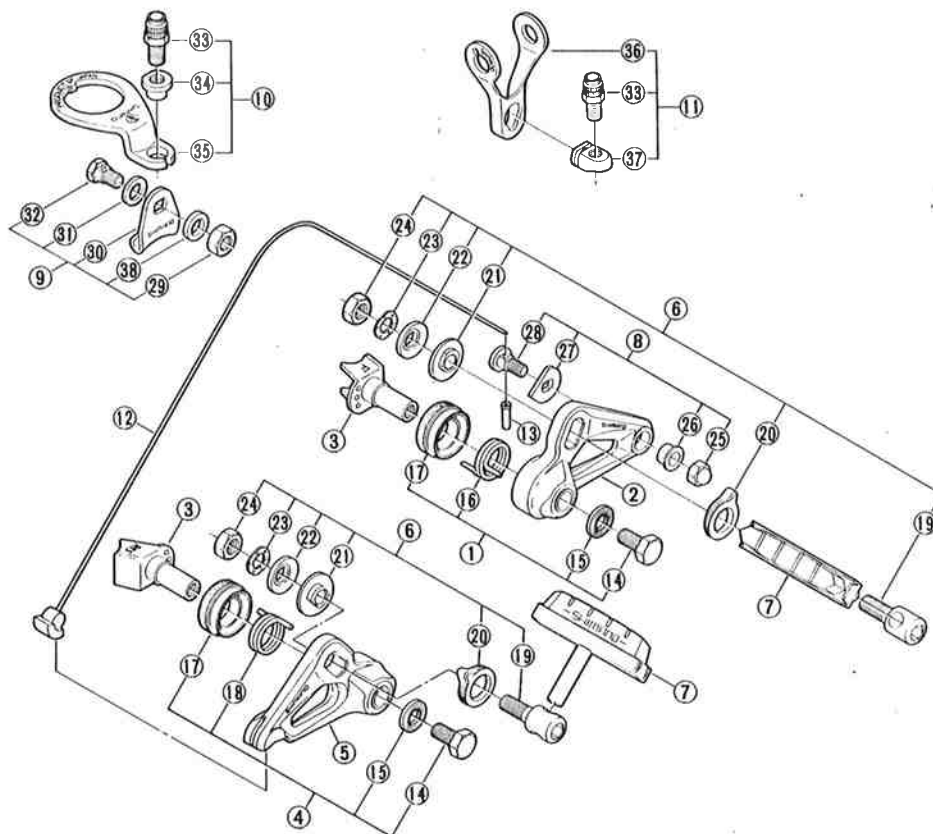


SHIMANO (EUROPA) GmbH.

Im Huelsenfeld 13 4010 Hilden,  
West Germany Tel.02103-5005-16

- You may photocopy this sheet and use it as an order form.
- Sie können dieses Blatt kopieren und als Bestellformular verwenden.
- Vous pouvez photocopier cette feuille et l'utiliser comme bon de commande.
- Dit blad kan gecopieerd en als bestelformulier gebruikt worden.
- Potete fotocopiare questo foglio e usarlo come modulo di commissione.

## BR-AT50 Cantilever Brake



ITEM NO.	PART NO.	DESCRIPTION	Q'TY
1	3-868 9801	Anchor Link Fixing Bolt Unit	
2	3-868 9802	Anchor Link w/Bush	
3	3-868 9030-1	Front Mounting Shaft for MTB (Radius 9.5mm)	
	3-868 9040-1	Rear Mounting Shaft for MTB (Radius 7.5mm)	
	3-861 9004-1	Front Mounting Shaft (Radius 8.5mm)	
	3-861 9005-1	Rear Mounting Shaft (Radius 5.5mm)	
4	3-868 9803	Hooking Link Fixing Bolt Unit	
5	3-868 9804	Hooking Link w/Bush	
6	3-868 9805	Brake Shoe Fixing Bolt Unit	
7	3-861 9806	Brake Shoe	
8	3-868 9806	Wire Fixing Bolt Unit	
9	3-831 9010	Cable Carrier Assembly	
10	3-831 9078	Front Cable Hanger Assembly	
11	3-831 9079	Rear Cable Hanger Assembly	
12	862 1401	Center Wire	
13	620 2011	Wire End Cap	
14	868 0800	Link Fixing Bolt	
15	868 0900	Link Fixing Washer	
16	861 5300	Return Spring for Anchor Link	
17	861 5500	Spring Cover	
18	861 5400	Return Spring for Hooking Link	
19	861 6100	Brake Shoe Fixing Bolt	
20	868 0300	Adjusting Washer	
21	868 0400	Spherical Spacer	
22	868 0500	Spherical Washer	
23	861 6300	Wave Washer	
24	815 0602	Brake Shoe Fixing Nut (M6)	
25	851 5201	Wire Fixing Nut (M5)	
26	868 0700	Spacer	
27	868 0600	Wire Fixing Plate	
28	851 5100	Wire Fixing Bolt	
29	831 0700	Cable Fixing Nut (M6)	
30	831 5200	Cable Carrier	
31	831 5400	Cable Fixing Washer 1.2mm	
32	831 5300	Cable Fixing Bolt	
33	3-831 9077	Cable Adjusting Barrel & Nut	
34	831 8500	Barrel Supporter (Front)	
35	831 6121	Front Cable Hanger	
36	831 6521	Rear Cable Hanger	
37	831 6403	Barrel Supporter (Rear)	
38	831 5410	Cable Fixing Washer 1.8mm	