

Dealer's Manual

ROAD Front hub / Freehub 11-speed

HB-9000
HB-6800
HB-5800
HB-R7000

FH-9000
FH-6800
FH-5800
FH-R7000

IMPORTANT NOTICE

- **This dealer's manual is intended primarily for use by professional bicycle mechanics.**

Users who are not professionally trained for bicycle assembly should not attempt to install the components themselves using the dealer's manuals.

If any part of the information on the manual is unclear to you, do not proceed with the installation. Instead, contact your place of purchase or a local bicycle dealer for their assistance.

- Make sure to read all instruction manuals included with the product.
- Do not disassemble or modify the product other than as stated in the information contained in this dealer's manual.
- All dealer's manuals and instruction manuals can be viewed on-line on our website (<http://si.shimano.com>).
- For consumers who do not have easy access to the internet, please contact a SHIMANO distributor or any of the SHIMANO offices to obtain a hardcopy of the User's Manual.
- Please observe the appropriate rules and regulations of the country, state or region in which you conduct your business as a dealer.

For safety, be sure to read this dealer's manual thoroughly before use, and follow it for correct use.

The following instructions must be observed at all times in order to prevent personal injury and physical damage to equipment and surroundings.

The instructions are classified according to the degree of danger or damage which may occur if the product is used incorrectly.



DANGER

Failure to follow the instructions will result in death or serious injury.



WARNING

Failure to follow the instructions could result in death or serious injury.



CAUTION

Failure to follow the instructions could cause personal injury or physical damage to equipment and surroundings.


TO ENSURE SAFETY

WARNING

- **When installing components, be sure to follow the instructions that are given in the instruction manuals.**

It is recommended that you use only genuine SHIMANO parts. If parts such as bolts and nuts become loose or damaged, the bicycle may suddenly fall over, which may cause serious injury.

In addition, if adjustments are not carried out correctly, problems may occur, and the bicycle may suddenly fall over, which may cause serious injury.

-  Be sure to wear safety glasses or goggles to protect your eyes while performing maintenance tasks such as replacing parts.
- After reading the dealer's manual thoroughly, keep it in a safe place for later reference.

Be sure to also inform users of the following:

- Check that the wheels are fastened securely before riding the bicycle. Using the quick release lever incorrectly may cause the wheel to fall off, etc. and lead to serious injury due to a fall.
- Failure to properly install this quick release hub (wheel) onto your bicycle may cause the wheel to become detached from the bicycle while you are riding and result in serious bodily injury.
- Make sure to read the instruction manual for the quick release lever.

For Installation to the Bicycle, and Maintenance:

- Use a front fork which is equipped with a wheel retention mechanism.

NOTICE

Be sure to also inform users of the following:

- Do not oil the internal parts of the hub. Otherwise, the grease will flow out.
- Use a neutral detergent when cleaning hubs. Other cleaners may damage the hubs. Do not clean any areas that have been instructed not to be cleaned.
- Do not clean the hub areas with a high-pressure wash. Water may get inside the hubs, which can degrade performance.
- Products are not guaranteed against natural wear and deterioration from normal use and aging.
- For maximum performance we highly recommend SHIMANO lubricants and maintenance products.

For Installation to the Bicycle, and Maintenance:

- <HB-9000/HB-6800/FH-9000/FH-6800>

The hub is designed in order to achieve optimal rotation when it is built into a wheel and installed to the frame. Therefore, the axle rotation will feel heavier before installation. In addition, the hub is structured so that it will not easily be affected by rotation regardless of whether the wheel is installed to the frame or not. When adjusting the rotation, make sure that there is no axle play.

- If the wheel becomes stiff and difficult to turn, you should lubricate it with grease.

The actual product may differ from the illustration because this manual is intended chiefly to explain the procedures for using the product.

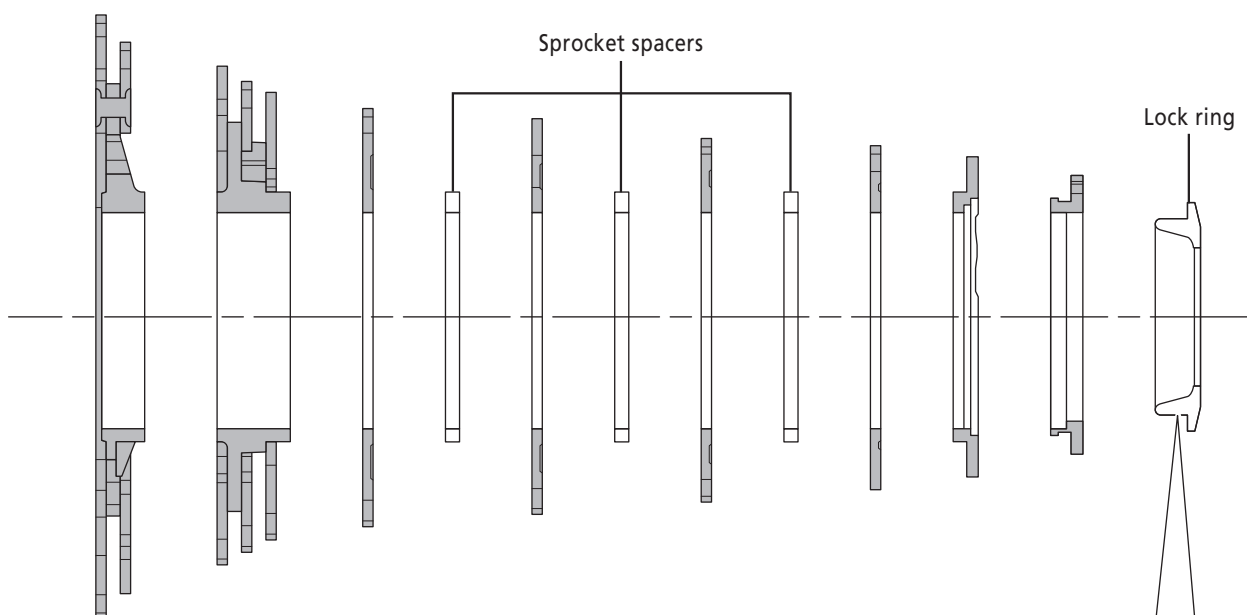
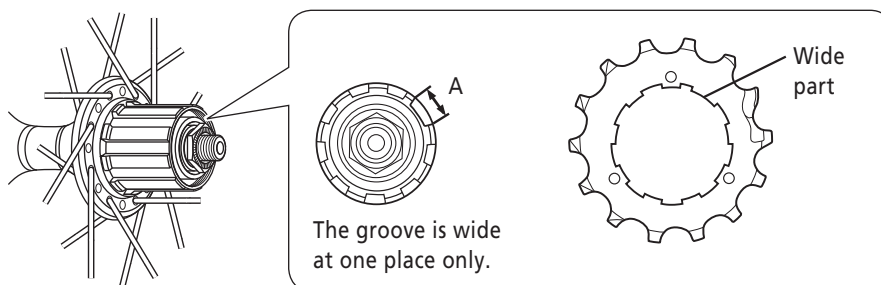
INSTALLATION

The following tools are needed to assemble this product.

Usage location	Tool
Lock ring	TL-LR15 / LR10

Install the hub as shown in the illustration.

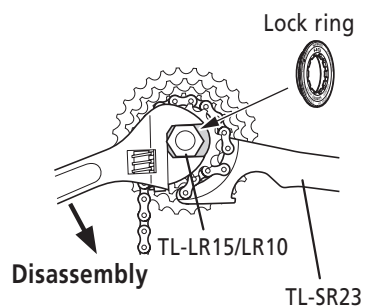
For each sprocket, the surface that has the group mark should face outward and be positioned so that the wide parts of the gear projections on each sprocket and the A part (where the groove width is wide) of the freewheel body are aligned.



- For installation of the HG sprockets, use the SHIMANO original tool TL-LR15/LR10 to tighten the lock ring.

Tightening torque:
30 - 50 N·m

- To replace the HG sprockets, use the SHIMANO original tool TL-LR15/LR10 and TL-SR23 to remove the lock ring.



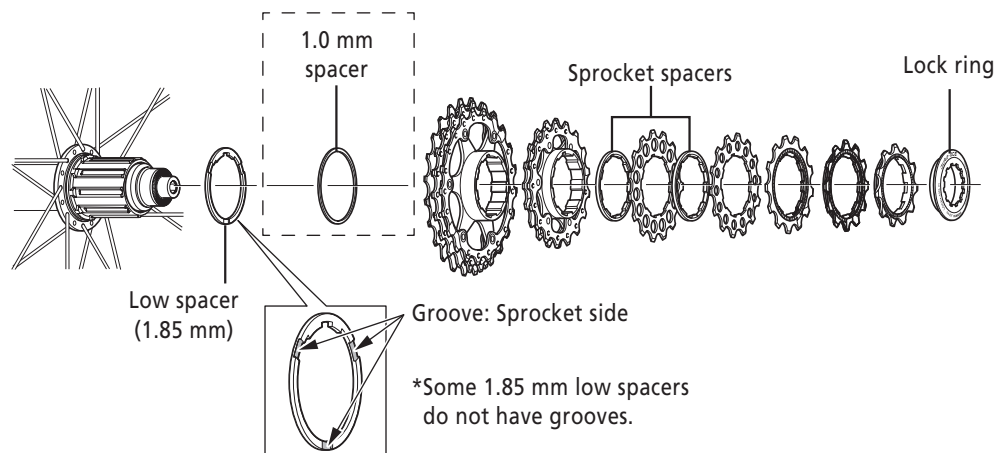
NOTICE:

When installing a 10-speed cassette:

Install the included 1.85 mm low spacer at the position indicated in the figure.

CS-7900/CS-7800/CS-6700/CS-6600/CS-5700/CS-5600:

A 1.0 mm spacer is included with the cassette. Install it.

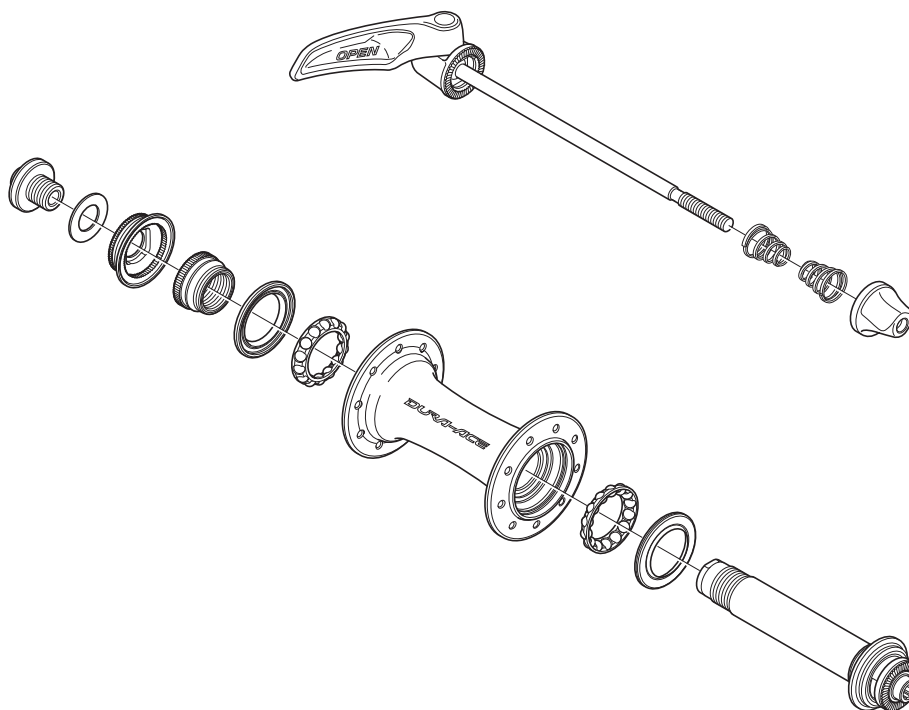


MAINTENANCE

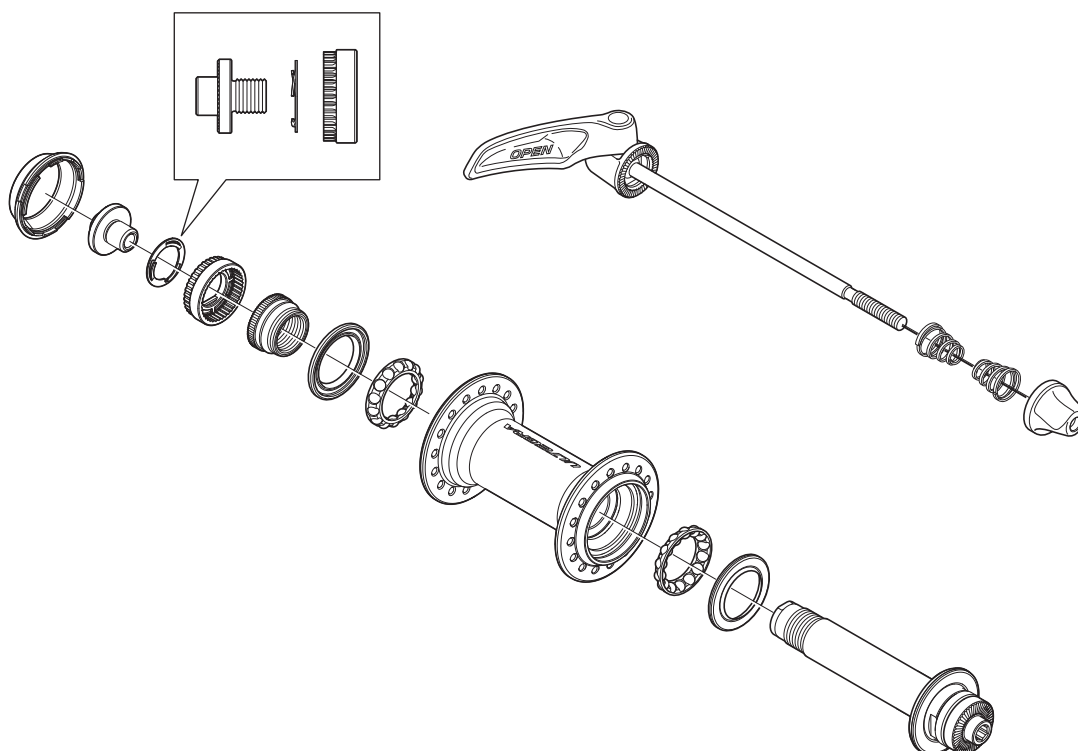
■ Front hub

Front hub can be disassembled as shown in the illustration. However, do not disassemble the front hub any further than this. If it is disassembled any further, it will not be possible to reassemble it.

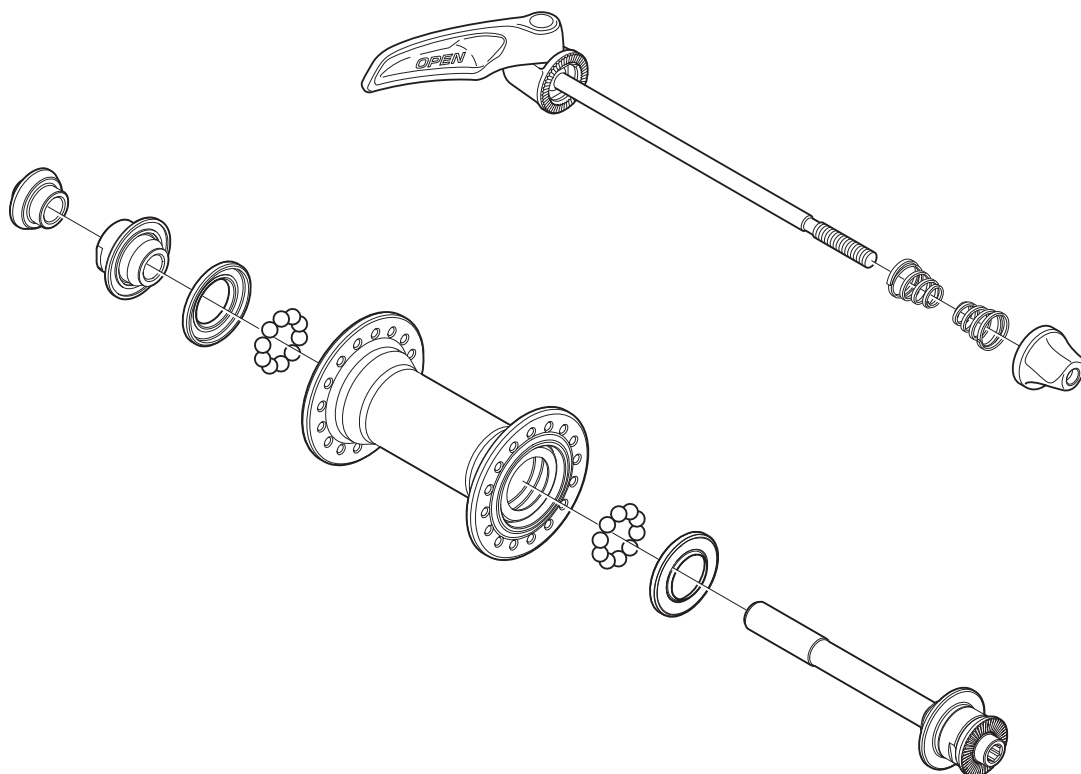
<HB-9000>



<HB-6800>

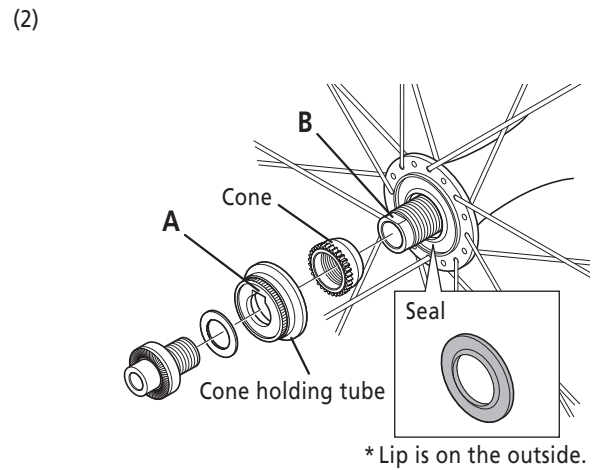
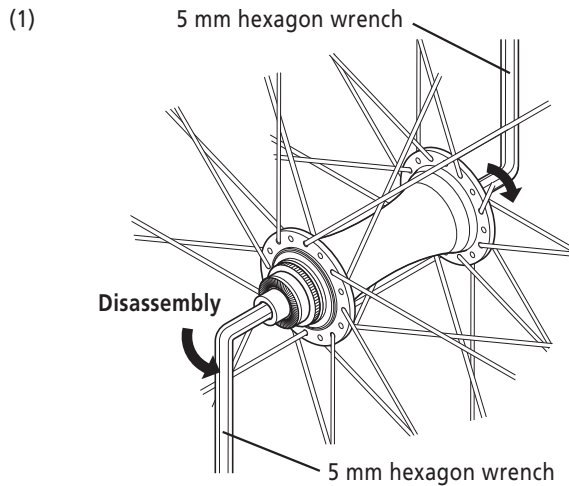


<HB-5800 / HB-R7000>

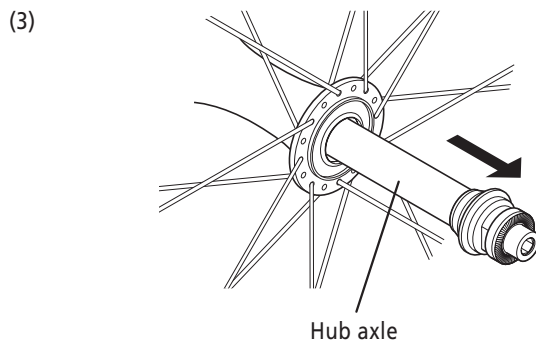


Pull out the hub axle by following the procedure shown in the illustration. Disassembly from the right side is not possible.

<HB-9000>



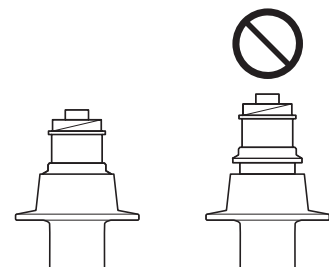
Tightening torque:
15 - 17 N·m



Cautions in installing the front hub.

NOTICE:

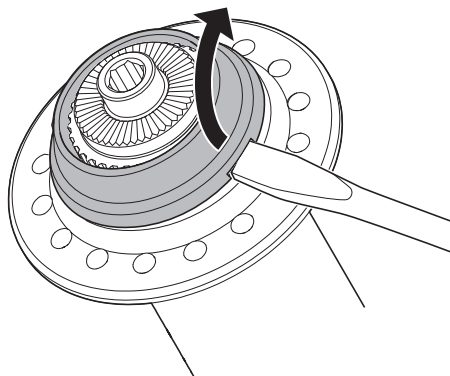
- When removing and installing the seal, do it very carefully so that the seal does not become bent.
When reinstalling the seal, make sure that it is facing the right way, and insert it as far as it will go.



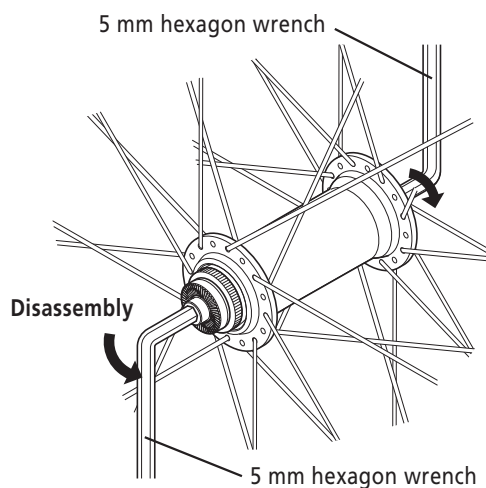
- Tighten the cone onto the hub axle until it has no looseness.
While aligning the knurls of the cone and the knurls of the cone holding tube, align section A of the cone holding tube with section B on the hub axle.

<HB-6800>

(1)

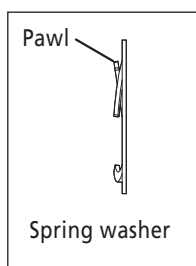


(2)

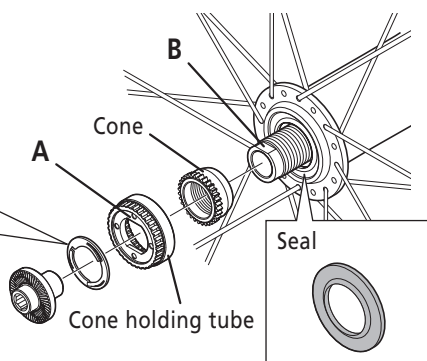


**Tightening torque:
15 - 17 N·m**

(3)

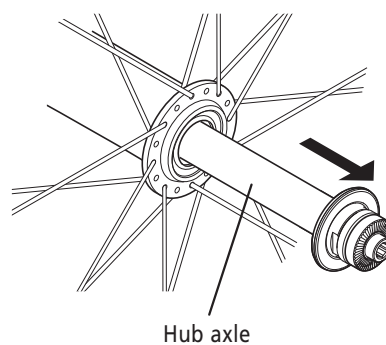


* Be careful about the direction.



* Lip is on the outside.

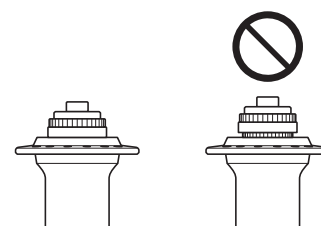
(4)



Cautions in installing the front hub.

NOTICE:

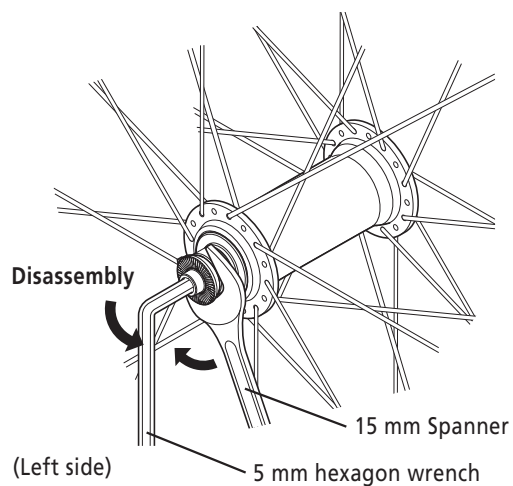
- When removing and installing the seal, do it very carefully so that the seal does not become bent.
When reinstalling the seal, make sure that it is facing the right way, and insert it as far as it will go.



- Tighten the cone onto the hub axle until it has no looseness.
While aligning the knurls of the cone and the knurls of the cone holding tube, align section A of the cone holding tube with section B on the hub axle.

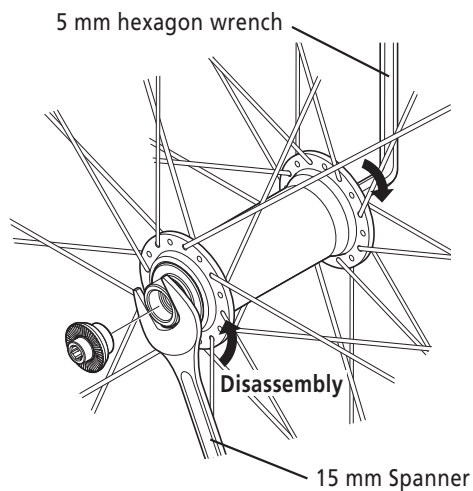
<HB-5800 / HB-R7000>

(1)

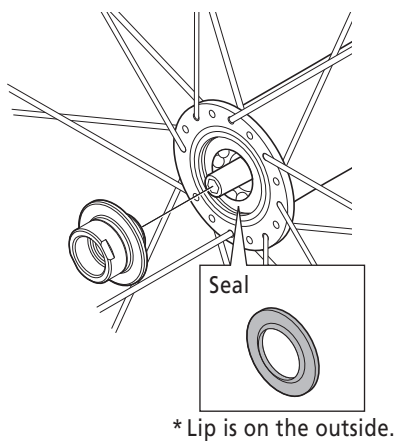


Tightening torque:
10 - 15 N·m

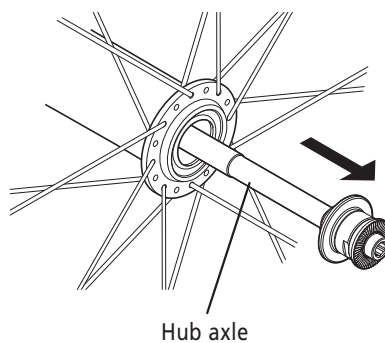
(2)



(3)



(4)



Cautions in installing the front hub.

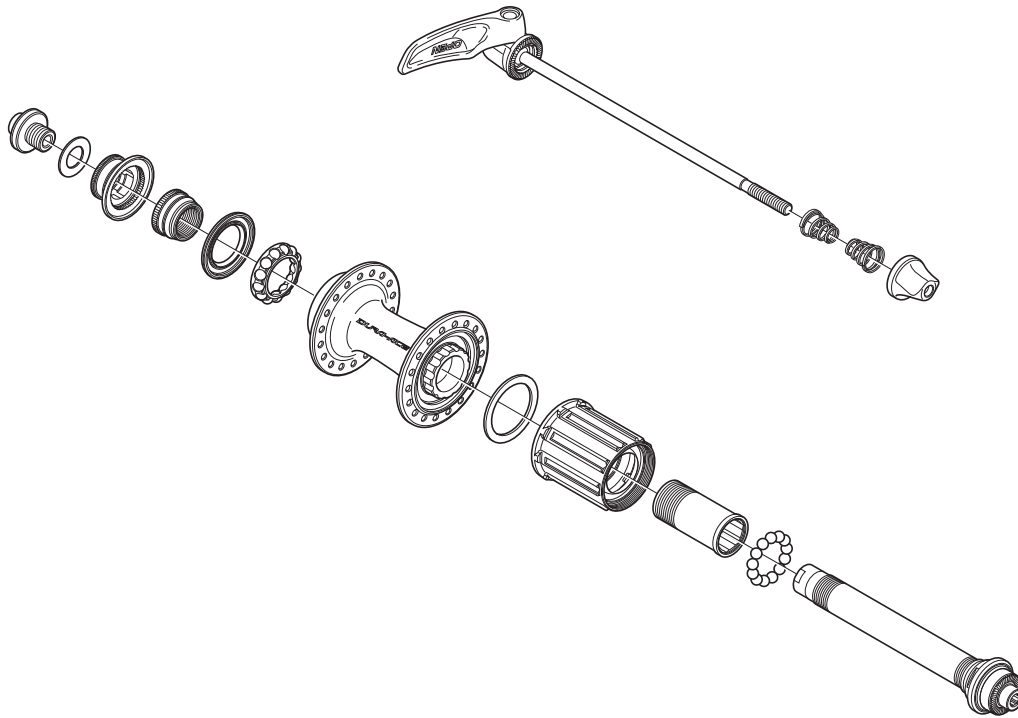
NOTICE:

- When removing and installing the seal, do it very carefully so that the seal does not become bent.
When reinstalling the seal, make sure that it is facing the right way, and insert it as far as it will go.

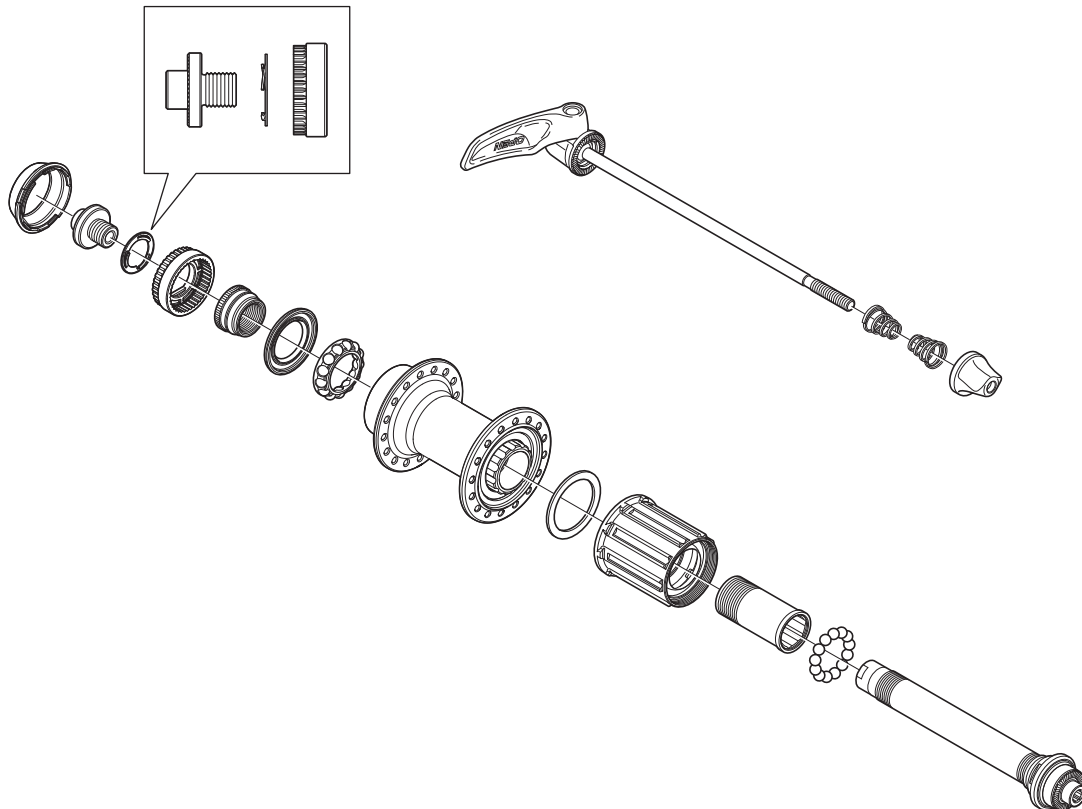
■ Freehub

Freehub can be disassembled as shown in the illustration. However, do not disassemble the freehub any further than this. If it is disassembled any further, it will not be possible to reassemble it.

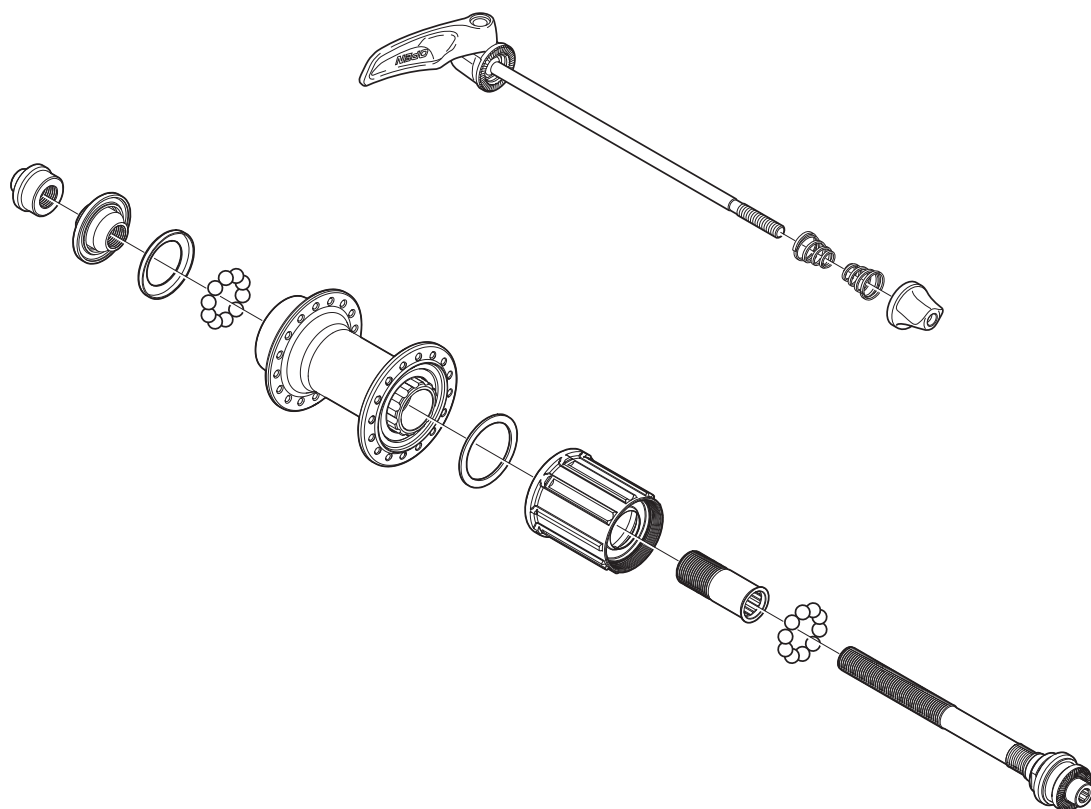
<FH-9000>



<FH-6800>

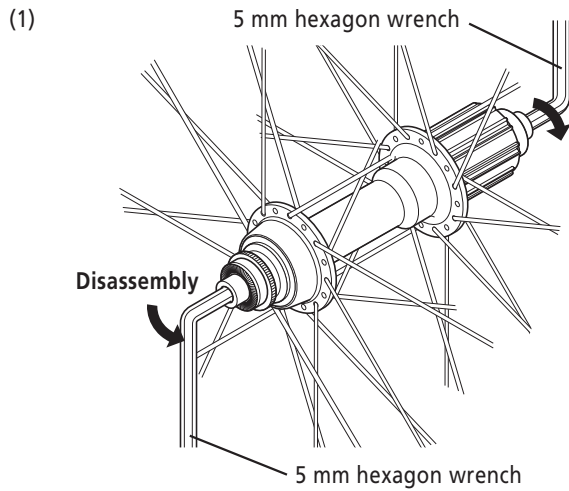


<FH-5800 / FH-R7000>

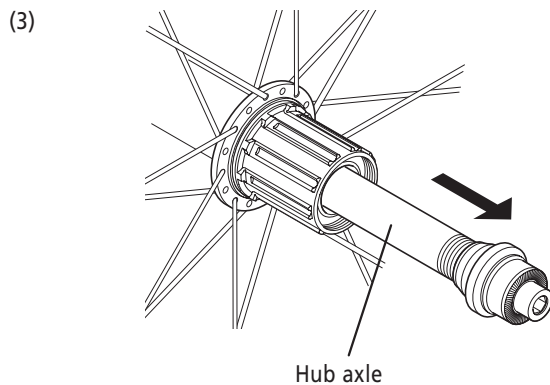
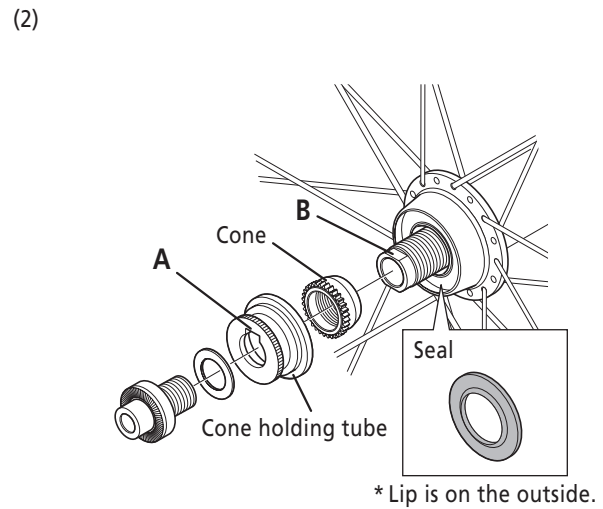


Pull out the hub axle by following the procedure shown in the illustration. Disassembly from the right side is not possible.

<FH-9000>



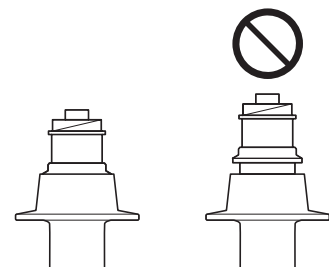
**Left side Tightening torque:
15 - 17 N·m**



Cautions in installing the freehub.

NOTICE:

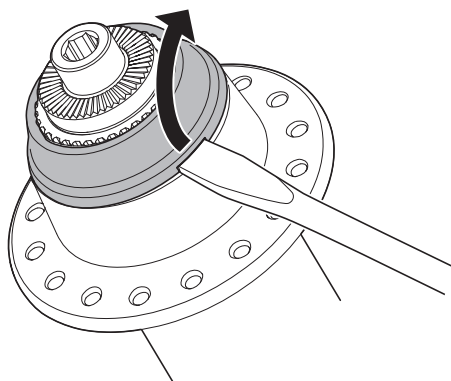
- When removing and installing the seal, do it very carefully so that the seal does not become bent.
When reinstalling the seal, make sure that it is facing the right way, and insert it as far as it will go.



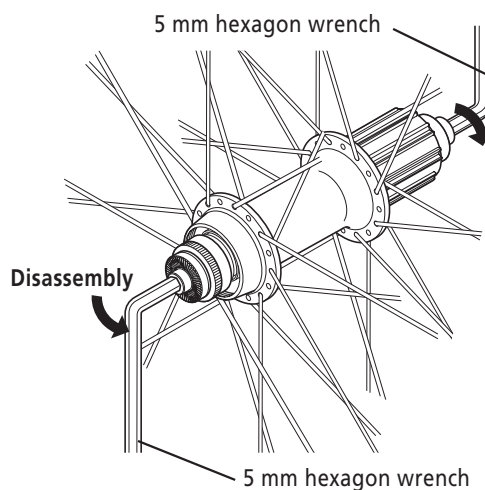
- Tighten the cone onto the hub axle until it has no looseness.
While aligning the knurls of the cone and the knurls of the cone holding tube, align section A of the cone holding tube with section B on the hub axle.

<FH-6800>

(1)

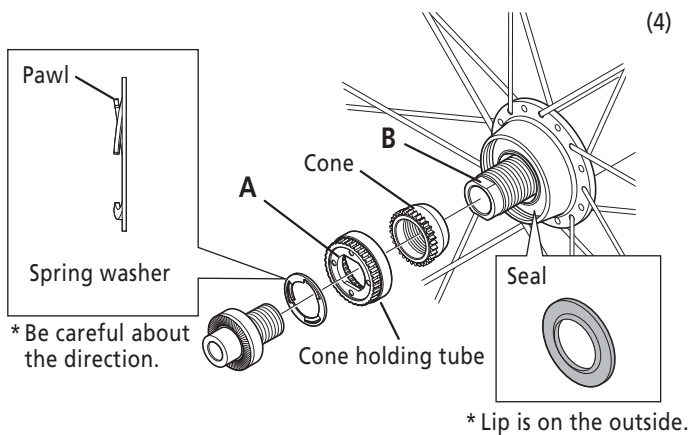


(2)

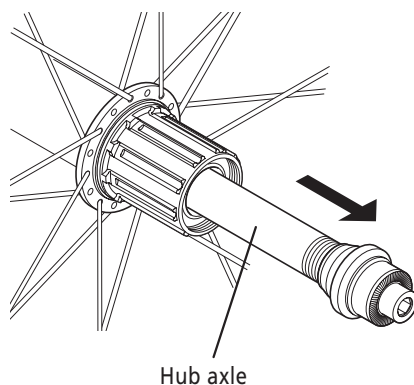


**Left side Tightening torque:
15 - 17 N·m**

(3)



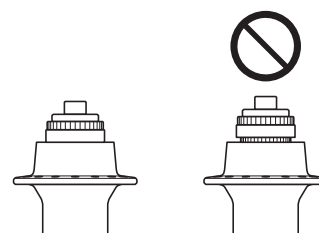
(4)



Cautions in installing the freehub.

NOTICE:

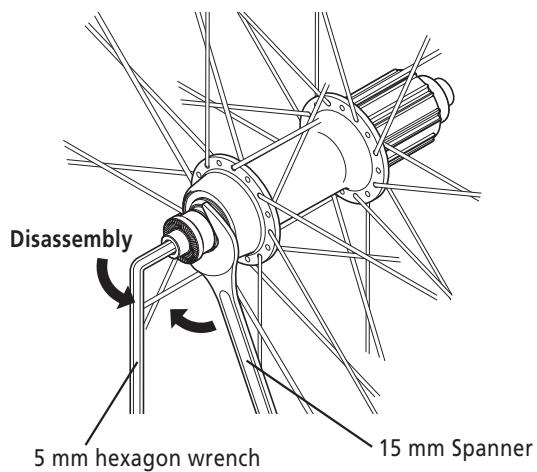
- When removing and installing the seal, do it very carefully so that the seal does not become bent.
When reinstalling the seal, make sure that it is facing the right way, and insert it as far as it will go.



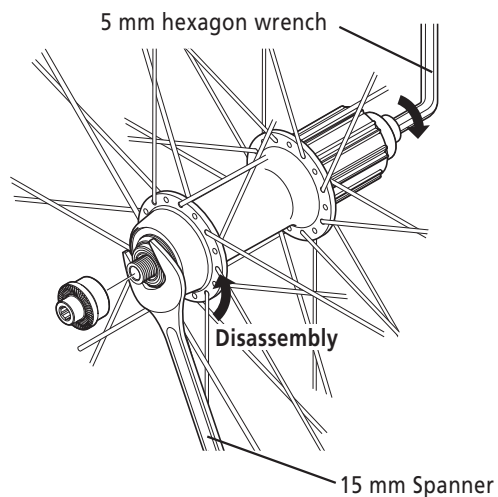
- Tighten the cone onto the hub axle until it has no looseness.
While aligning the knurls of the cone and the knurls of the cone holding tube, align section A of the cone holding tube with section B on the hub axle.

<FH-5800 / FH-R7000>

(1)

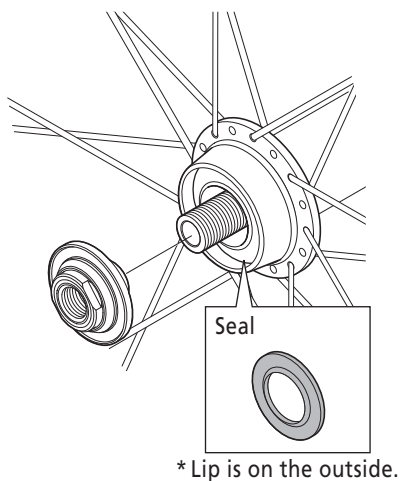


(2)

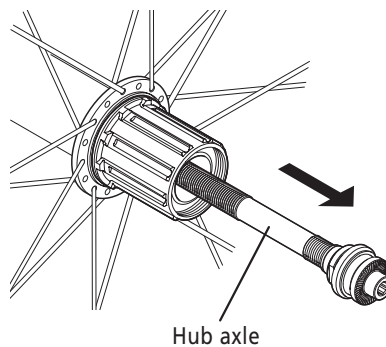


**Left side Tightening torque:
10 - 15 N·m**

(3)



(4)



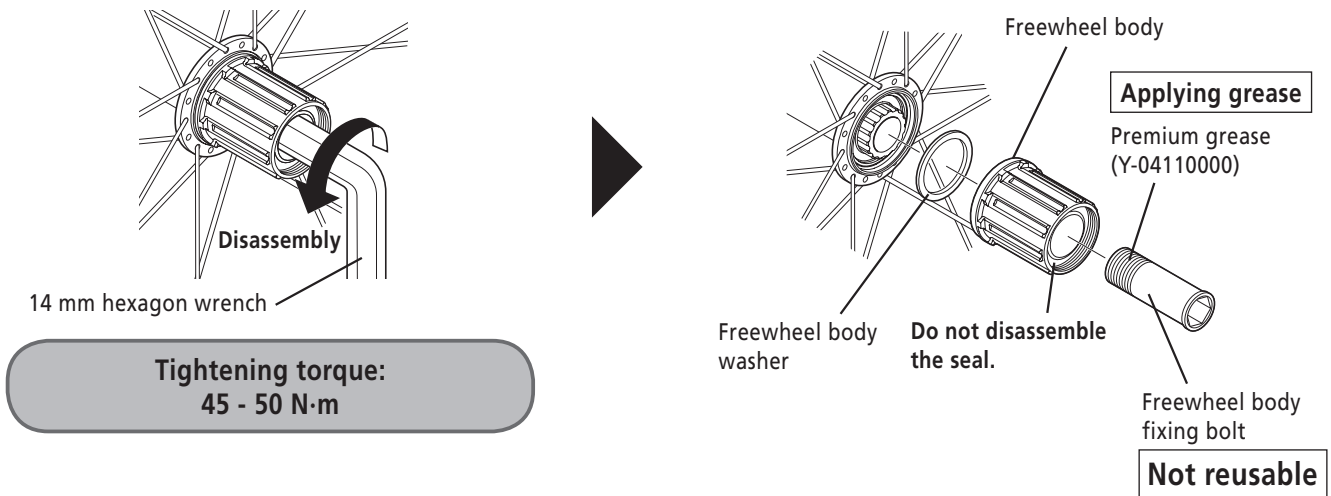
Cautions in installing the freehub.

NOTICE:

- When removing and installing the seal, do it very carefully so that the seal does not become bent.
When reinstalling the seal, make sure that it is facing the right way, and insert it as far as it will go.

After removing the hub axle, remove the freewheel body fixing bolt (inside the freewheel body), and then replace the freewheel body.

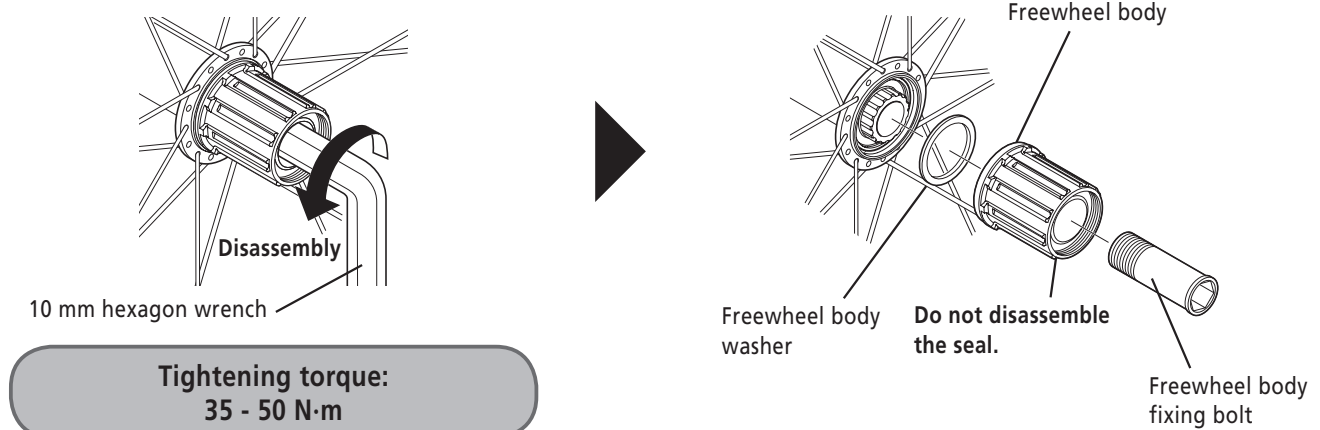
<FH-9000 / FH-6800>



NOTICE:

- For FH-9000, replace the freewheel mounting bolt as well when replacing the freewheel.
- Be sure to apply grease to the thread of the freewheel body fixing bolt, otherwise looseness or sticking may occur.
Do not disassemble the freewheel or apply oil or grease to it, otherwise problems with operation may occur.

<FH-5800 / FH-R7000>



SHIMANO

SHIMANO NORTH AMERICA BICYCLE, INC.

One Holland, Irvine, California 92618, U.S.A. Phone: +1-949-951-5003

SHIMANO EUROPE B.V.

High Tech Campus 92, 5656 AG Eindhoven, The Netherlands Phone: +31-402-612222

SHIMANO INC.

3-77 Oimatsu-cho, Sakai-ku, Sakai City, Osaka 590-8577, Japan

Please note: specifications are subject to change for improvement without notice. (English)

© Dec. 2023 by SHIMANO INC. ITP