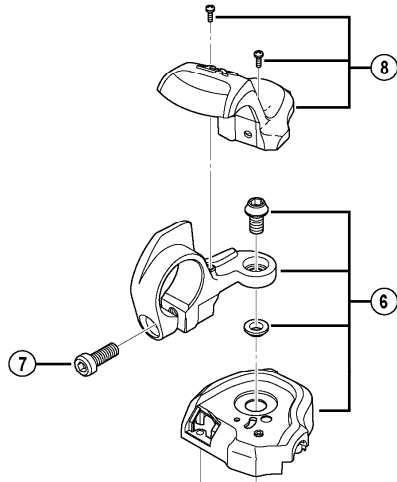
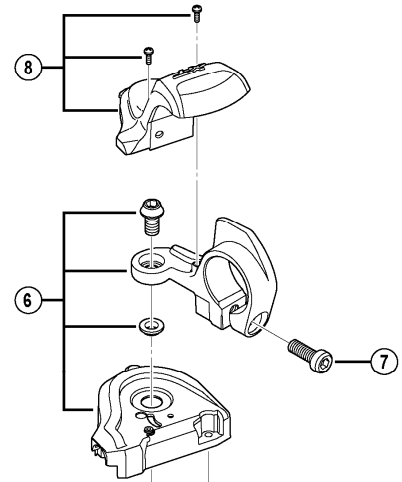


DEORE XT Rapidfire Lever SL-T780

For Left Hand



For Right Hand



SL-M980

SL-M780

SL-T670

| ITEM NO. | SHIMANO CODE NO. | DESCRIPTION | INTERCHANGEABILITY | | |
|----------|------------------|--------------------------------|--------------------|---------|---------|
| | | | SL-M980 | SL-M780 | SL-T670 |
| 1 | Y6UW98010 | R.H. Shifting Lever Unit | | | |
| | Y6UX98010 | L.H. Shifting Lever Unit | | | |
| 2 | Y6UU98040 | Base Cover Fixing Screw Unit | | A | |
| 3 | Y6CD33000 | Inner Hole Cap | A | A | A |
| | Y6UU11000 | R.H. Pin Plate | | A | |
| | Y6UV61000 | L.H. Pin Plate | | A | |
| 5 | Y6TA98020 | R.H. Cable Adjusting Bolt Unit | B | A | A |
| | Y6UV98020 | L.H. Cable Adjusting Bolt Unit | B | A | A |
| 6 | Y6UU98050 | R.H. Base Cover Unit | | A | |
| | Y6UV98040 | L.H. Base Cover Unit | | A | |
| 7 | Y6T842000 | Clamp Bolt (M5 x 13.5) | A | A | A |
| | Y6UW98020 | R.H. Indicator Unit | | | |
| 8 | Y6UX98020 | L.H. Indicator Unit | | | |

A: Same parts.

B: Parts are usable, but differ in materials, appearance, finish, size, etc.

Absence of mark indicates non-interchangeability.

Jun.-2012-3443

© Shimano Inc. A