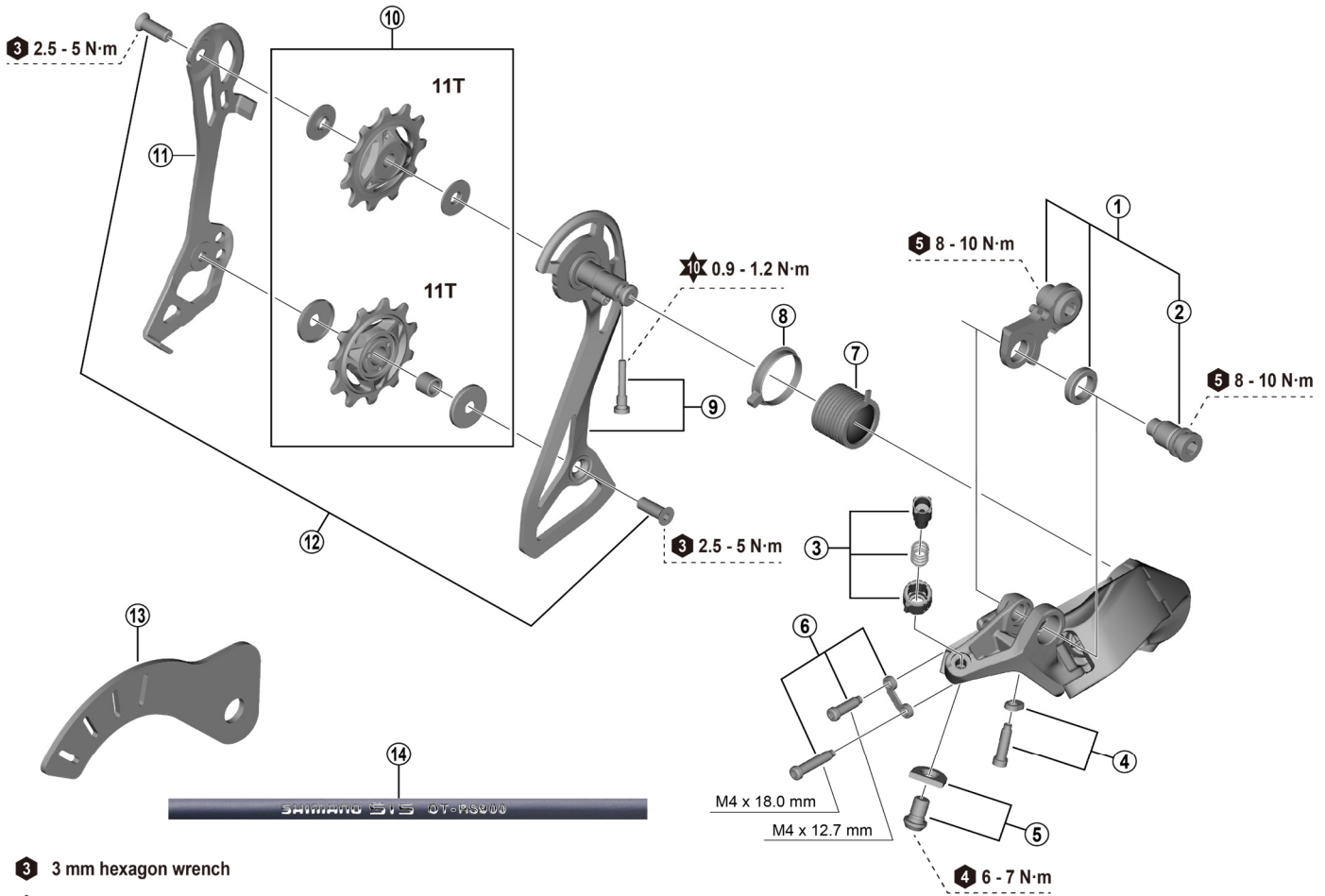


# SHIMANO 105 Rear Derailleur

## RD-R7100 (12-speed)



- 3 3 mm hexagon wrench
- 4 4 mm hexagon wrench
- 5 5 mm hexagon wrench
- ★ Hexalobular[<sup>#</sup>10]

ITEM NO.	SHIMANO CODE NO.	DESCRIPTION	INTERCHANGEABILITY		
			RD-R7150	RD-R7000	
1	Y3HY98020	Bracket axle unit	A	A	
2	Y3HY9801T	Bracket axle	A	A	
3	Y3F398030	Cable adjustment barrel unit		A	
4	Y3JU98010	B-screw and plate			
5	Y3F398040	Cable fixing screw and plate		A	
6	Y3E998060	High / Low limit screw and plate			
7	Y5PV17000	Plate tension spring	A	A	
8	Y5PV24000	P-Seal ring		A	
9	Y3JU98020	Outer plate and retaining screw			
10	Y3JU98030	Tension and guide pulley set	B		
11	Y3JU9801T	Inner plate			
12	Y5V598140	Pulley screw (2 pcs.)	A		
13	Y3K49801T	G-pulley setting tool	A		
14	Y0BM98011	OT-RS900 (black) 240 mm x 10 pcs. (with sealed outer cap and outer cap with long tongue)		A	
	Y0BM98021	OT-RS900 (white) 240 mm x 10 pcs. (with sealed outer cap and outer cap with long tongue)		A	
	Y0BM98031	OT-RS900 (red) 240 mm x 10 pcs. (with sealed outer cap and outer cap with long tongue)		A	
	Y0BM98041	OT-RS900 (high-tech gray) 240 mm x 10 pcs. (with sealed outer cap and outer cap with long tongue)		A	

A: Same parts.

B: Parts are usable, but differ in materials, appearance, finish, size, etc.

Absence of mark indicates non-interchangeability.

Specifications are subject to change without notice.

Torque information is listed.

Oct.-2024-5037C

© Shimano Inc. I

# SHIMANO

