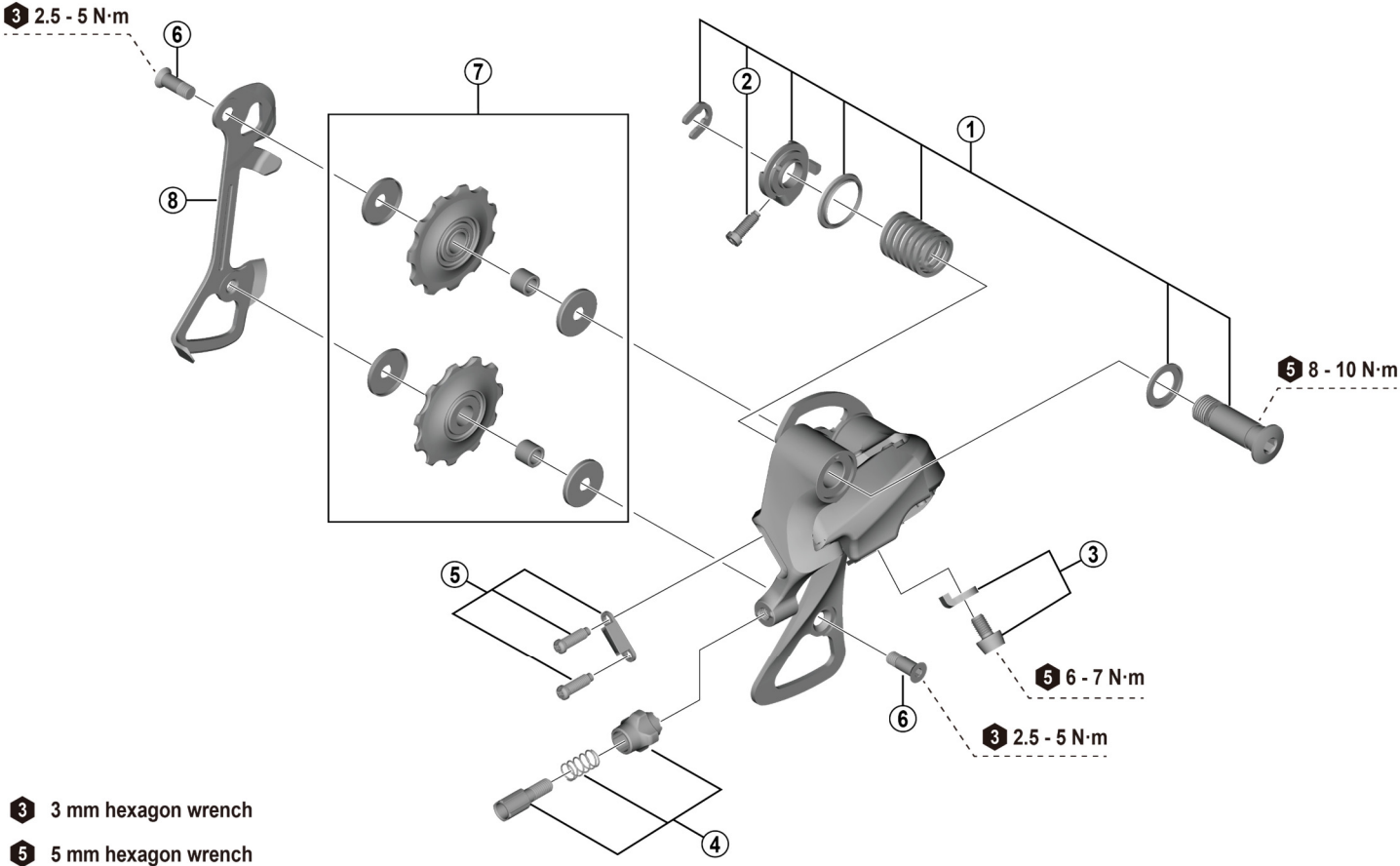


CLARIS Rear Derailleur
RD-R2000-SS / GS (8-speed)



ITEM NO.	SHIMANO CODE NO.	DESCRIPTION	INTERCHANGE-ABILITY		
			A	B	
* 1	Y2B098010	Mounting screw unit			
* 2	Y5Z09801T	End adjust screw (M4 x 13.5)	A		
3	Y2B098020	Cable fixing screw and plate	A		
* 4	Y5Z098020	Cable adjustment barrel unit	A		
5	Y5Y498030	Stroke adjusting screws (M4 x 13) and plate	A		
* 6	Y5Z098030	Pulley screw (2 pcs.)	A		
7	Y5TT98020	Tension and guide pulley set	A		
8	Y5Z000090	Inner plate (SS-type)	A		
	Y5Z000080	Inner plate (GS-type)	A		

A: Same parts.

B: Parts are usable, but differ in materials, appearance, finish, size, etc.

Absence of mark indicates non-interchangeability.

Specifications are subject to change without notice.

Torque information is listed.

Jan.-2025-4159A

© Shimano Inc. I

SHIMANO

