

SHIMANO

SHIMANO (EUROPA) GmbH.
Kleinhülsen 1-3 40724 Hilden, Germany
Tel. 02103-5005-0

SHIMANO AMERICAN CORPORATION
One Shimano Drive, P.O. Box 19615, Irvine,
California U.S.A. 92713-9615 Tel. (714) 951-5003

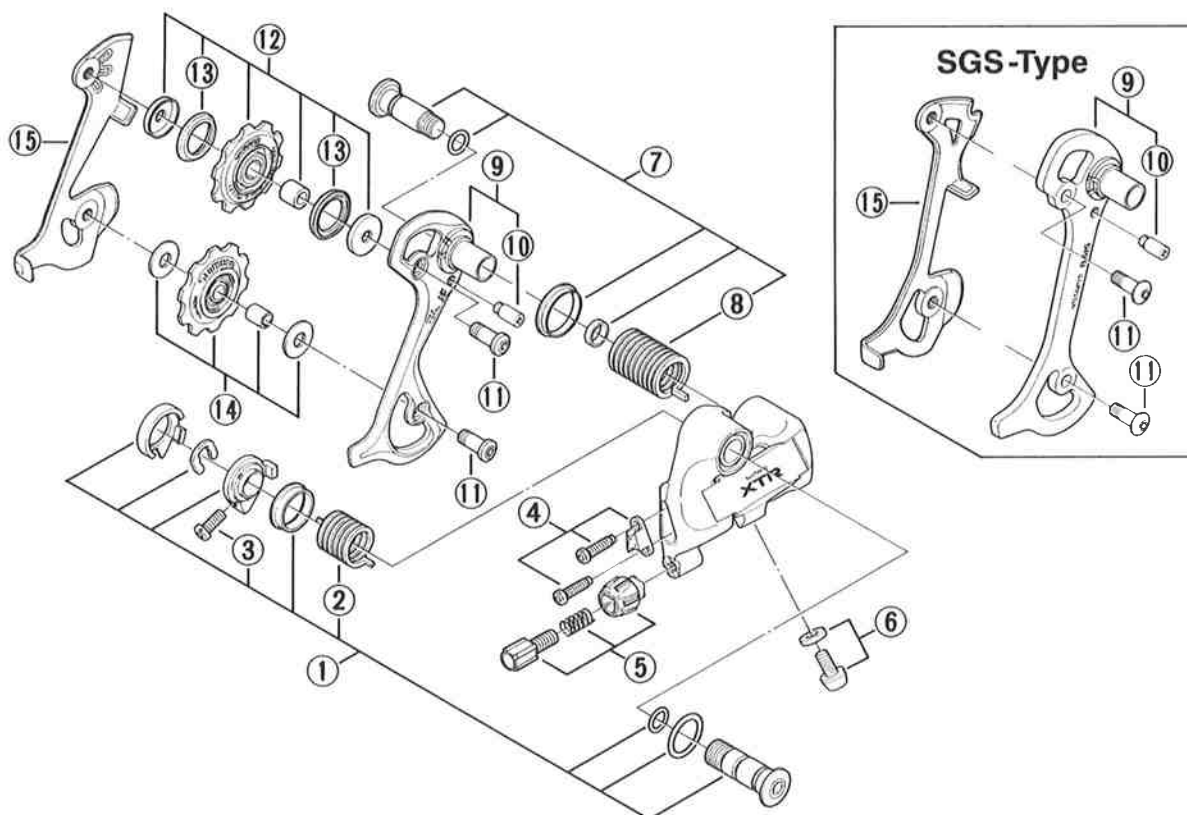
Small parts list for after market.

- You may photocopy this sheet and use it as an order form.
- Sie können dieses Blatt kopieren und als Bestellformular verwenden.
- Vous pouvez photocopier cette feuille et l'utiliser comme bon de commande.
- Dit blad kan gecopieerd en als bestelformulier gebruikt worden.
- Potete fotocopiare questo foglio e usarlo come modulo di commissione.

SHIMANO XTR Rear Derailleur (8-Speed)

RD-M910 Middle Cage

RD-M910-SGS Super Long Cage



	Q'TY	ITEM NO.	PART NO.	DESCRIPTION	WEIGHT / PACK (g)	Q'TY / PACK
		1	53L 9801	B-Axle Assembly	34	1
		2	556 0200	B-Tension Spring	52	10
		3	556 2501	B-Tension Adjusting Screw (M4 × 12)	14	10
		4	53L 9802	Stroke Adjusting Screws (M4 × 14.5) & Plate	34	10
		5	53H 9803	Cable Adjusting Bolt Unit	48	10
		6	53K 9804	Cable Fixing Bolt (M5 × 8.5) & Plate	36	10
		7	53H 9804	Plate Axle Assembly	24	1
		8	556 1300	P-Tension Spring	108	10
		9	53H 9806	Outer Plate & Plate Stopper Pin	30	1
			53L 9803	Outer Plate (SGS-Type) & Plate Stopper Pin	36	1
		10	557 1500	Plate Stopper Pin	18	10
		11	54A 1820	Pulley Bolt (M5 × 12.7)	26	10
			569 5440	Pulley Bolt (M5 × 14) SGS-Type	28	10
		12	53H 9808	Guide Pulley Unit	94	10
		13	53B 1800	Pulley Seal Ring	6	10
		14	53H 9810	Tension Pulley Unit	112	10
			53H 0900	Inner Plate	18	1
		15	53K 1020	Inner Plate (SGS-Type)	38	1