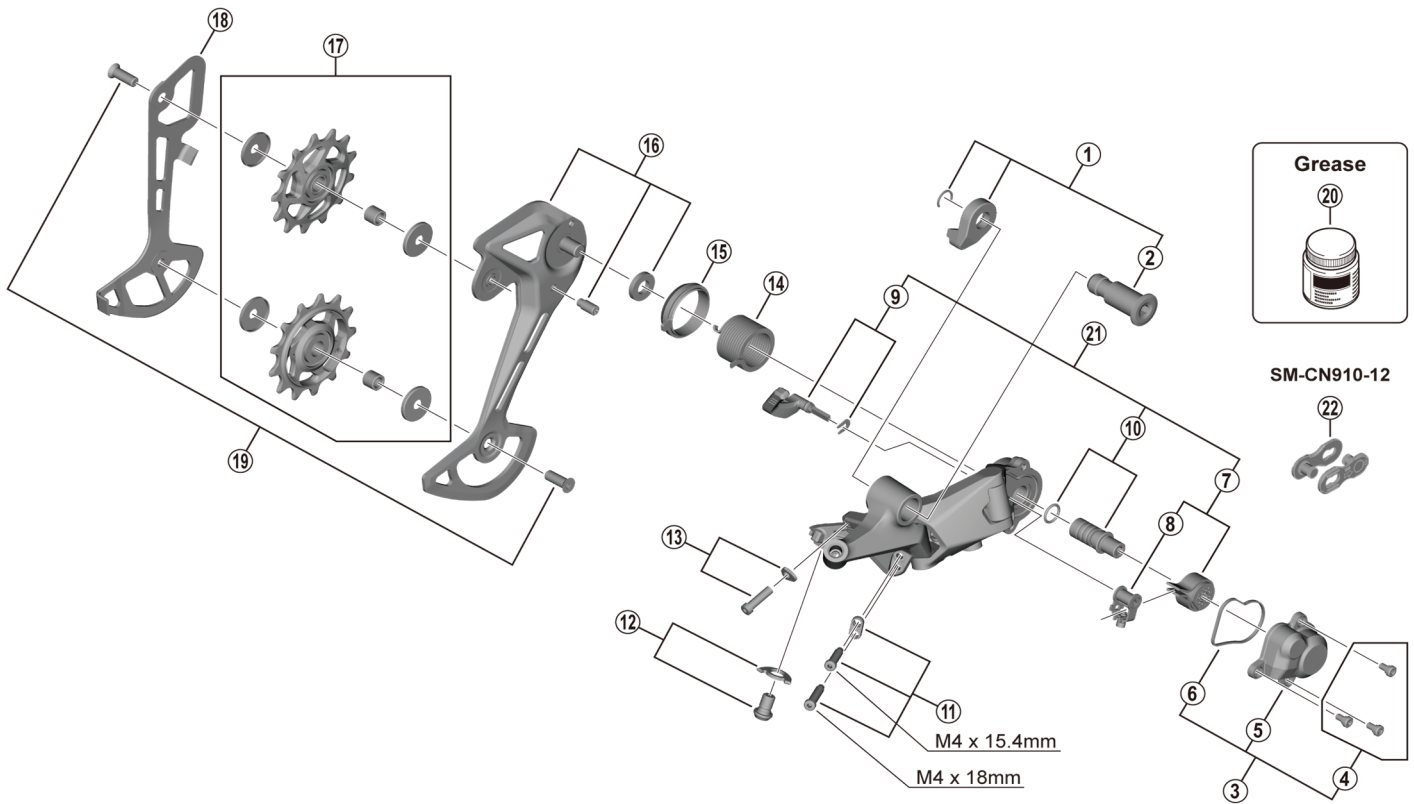


DEORE Rear Derailleur RD-M6100-SGS 12-speed



ITEM NO.	SHIMANO CODE NO.	DESCRIPTION	INTERCHANGEABILITY	
1	Y3HK98010	Bracket axle unit	B	
2	Y3HK42000	B-axle	B	
3	Y3HK98020	P-cover unit	B	
4	Y5Y198070	P-cover screw set (3 pcs.)	A	
5	Y3HK43000	P-cover	B	
6	Y3FA63000	P-cover packing	A	
7	Y3GF98040	Stabilizer unit and cam unit	A	
8	Y3E498040	Cam unit	A	
9	Y3FA98040	Switch lever unit and fixing plate	A	
10	Y5PV98060	P-axle and O-ring	A	
11	Y3FW98050	Stroke adjusting screws and plate	A	
12	Y3FW98060	Cable fixing screw and plate	A	
13	Y3FW98070	End adjust screw (M4 x 14.1) and plate	A	
14	Y3FA55000	P-tension spring	A	
15	Y3FA62000	P-seal ring	A	
16	Y3HK98030	Outer plate assembly (SGS)	B	
17	Y3FY98010	Tension and guide pulley set	A	
18	Y3HK26000	Inner plate (SGS)	B	
19	Y5V598140	Pulley screw 12.5 mm (2 pcs.)	A	
20	Y04121000	New grease for stabilizer (Net. 50 g)	A	
* 21	Y3FA98100	Stabilizer kit unit	A	
* 22	ISMCN91012A	SM-CN910-12 QUICK-LINK	A	

A: Same parts.

B: Parts are usable, but differ in materials, appearance, finish, size, etc.

Absence of mark indicates non-interchangeability.

Specifications are subject to change without notice.

Apr.-2021-4677A

© Shimano Inc. I

SHIMANO



quefairedemesdechets.fr