

SHIMANO

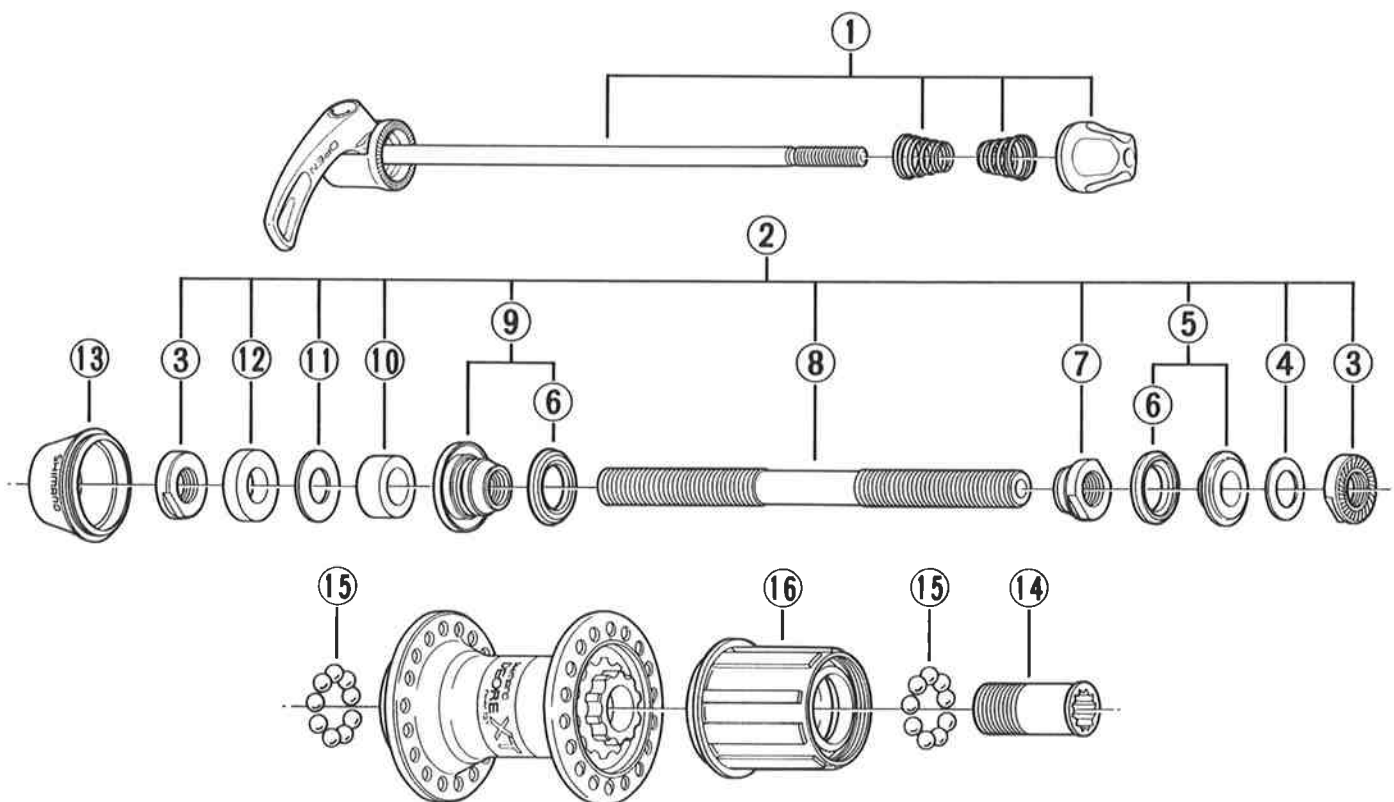
SHIMANO (EUROPA) GmbH.
Kleinhülsen 1-3 40724 Hilden, Germany
Tel. 02103-5005-0

SHIMANO AMERICAN CORPORATION
One Shimano Drive, P.O. Box 19615, Irvine,
California U.S.A. 92713-9615 Tel. (714) 951-5003

Small parts list for after market.

- You may photocopy this sheet and use it as an order form.
- Sie können dieses Blatt kopieren und als Bestellformular verwenden.
- Vous pouvez photocopier cette feuille et l'utiliser comme bon de commande.
- Dit blad kan gecopieerd en als bestelformulier gebruikt worden.
- Potete fotocopiare questo foglio e usarlo come modulo di commissione.

DEORE XT Freehub FH-M737-A 8-Speed



• Use with CS-M737-8R.

	Q'TY	ITEM NO.	PART NO.	DESCRIPTION	WEIGHT / PACK (g)	Q'TY / PACK
		1	32P 9030	Complete Quick Release 168 mm (6-5/8")	84	1
		2	32S 9801	Complete Hub Axle 146 mm (5-3/4")	550	5
		3	32P 0800	Serated Lock Nut 4 mm	48	10
		4	220 0430	Right Hand Washer 0.5 mm	10	10
		5	3AP 9803	Right Hand Axle Spacer Unit	72	10
		6	377 1000	Seal Ring	6	10
		7	32P 0900	Right Hand Cone M10 × 9 mm	66	10
		8	360 1920-9	Hub Axle 146 mm (5-3/4")	508	10
		9	32P 9803	Left Hand Cone (M10 × 16 mm) w/Dust Cover & Seal Ring	156	10
		10	220 0411	Left Hand Axle Spacer 8 mm	90	10
		11	3AC 0900	Left Hand Washer 0.5 mm	10	10
		12	3AC 0800	Left Hand Axle Spacer 5 mm	82	10
		13	3AC 0400	Rubber Seal	42	10
		14	359 0400	Body Fixing Bolt	138	10
		15	000 9131	Steel Ball (1/4") 18 pcs.	20	1
		16	32P 9801	Complete Freewheel Body w/Right Hand Dust Cap	154	1

Over Lock Nut Dimension: 135 mm (5-5/16")

02 Printed in Japan 9410-1507A