

SHIMANO

SHIMANO EUROPA

Industrieweg 24 NL-8071 CT Nunspeet, Holland
Phone 31-3412-72222

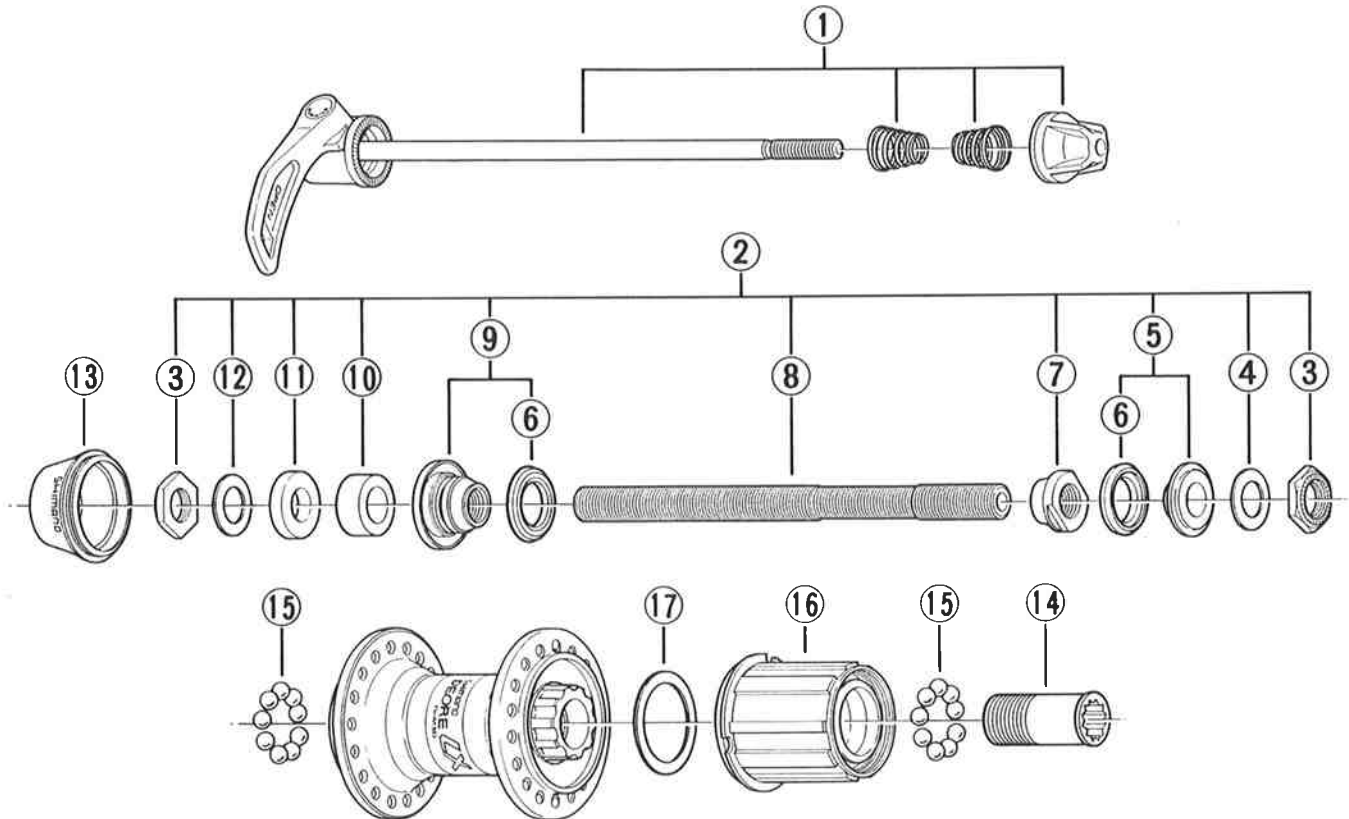
SHIMANO AMERICAN CORPORATION

One Shimano Drive, P.O. Box 19615, Irvine,
California U.S.A. 92713-9615 Phone 714-951-5003

Small parts list for after market.

- You may photocopy this sheet and use it as an order form.
- Sie können dieses Blatt kopieren und als Bestellformular verwenden.
- Vous pouvez photocopier cette feuille et l'utiliser comme bon de commande.
- Dit blad kan gecopieerd en als bestelformulier gebruikt worden.
- Potete fotocopiare questo foglio e usarlo come modulo di commissione.

DEORE LX Freehub FH-M565 8-Speed



• Use with CS-HG70-C8.

	Q'TY	ITEM NO.	PART NO.	DESCRIPTION	WEIGHT / PACK (g)	Q'TY / PACK
		*	1	30R 9022	Complete Quick Release 168 mm (6-5/8")	86 1
			2	30R 9802	Complete Hub Axle 146 mm (5-3/4")	560 5
			3	220 0502-1	Serrated Lock Nut 3.5 mm	56 10
			4	220 0430	Right Hand Washer 0.5 mm	10 10
			5	3AP 9803	Right Hand Axle Spacer Unit	72 10
			6	377 1000	Seal Ring	6 10
			7	3AE 0300	Right Hand Cone M10 x 9 mm	66 10
			8	30K 0120	Hub Axle 146 mm (5-3/4")	504 10
			9	30P 9803	Left Hand Cone (M10 x 16 mm) w/Dust Cover & Seal Ring	156 10
			10	220 0411	Left Hand Axle Spacer 8 mm	90 10
			11	3AC 0810	Left Hand Axle Spacer 4 mm	80 10
			12	3AC 0900	Left Hand Washer 0.5 mm	10 10
			13	3AC 0400	Rubber Seal	42 10
			14	359 0400	Body Fixing Bolt	138 10
			15	000 9131	Steel Ball (1/4") 18 pcs.	20 1
			16	30R 9801	Complete Freewheel Body w/Right Hand Dust Cap	154 1
			17	375 0400	Freewheel Body Washer	22 10

Over Lock Nut Dimension: 135 mm (5-5/16")

02 Printed in Japan 9505-1487B