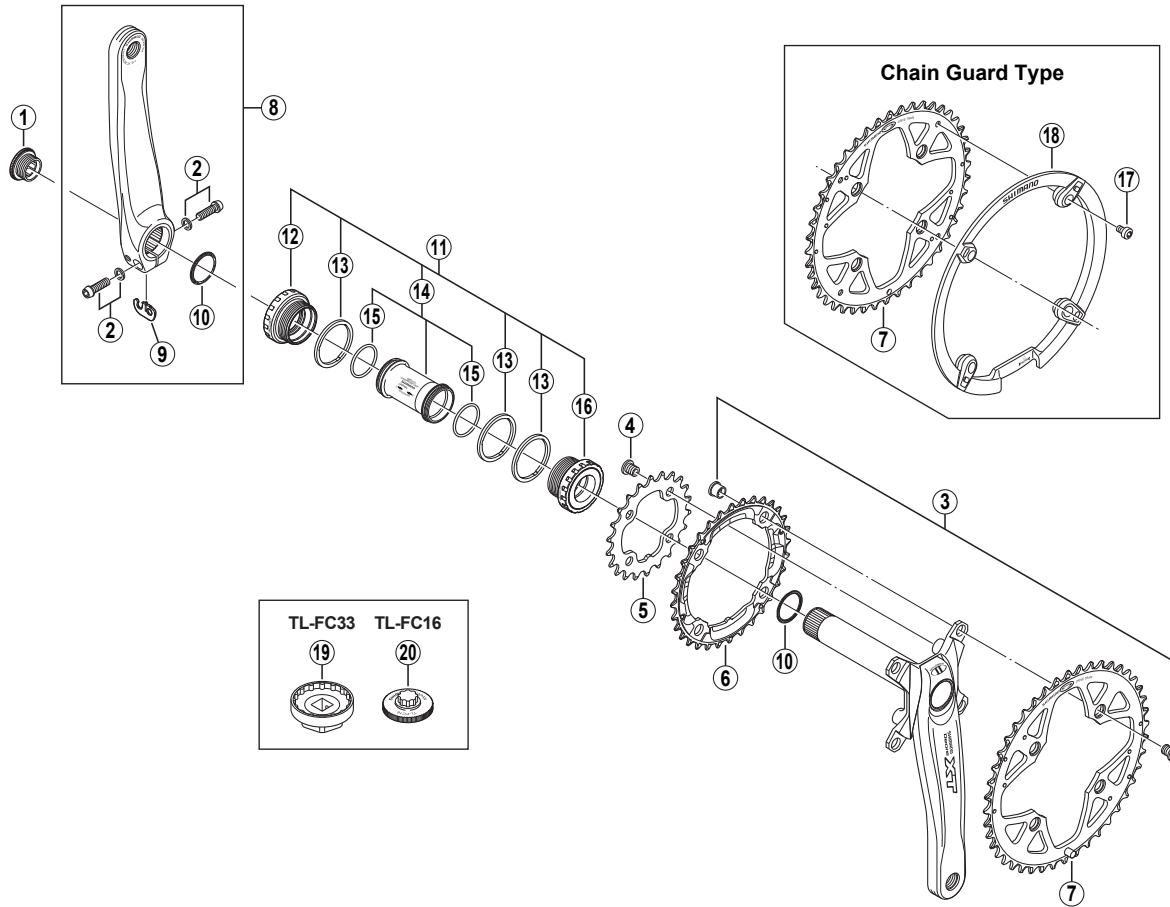


DEORE XT Front Chainwheel FC-M760



• Bolt circle diameter: 104 mm...(For outer gear and middle gear), 64 mm...(For inner gear)

ITEM NO.	SHIMANO CODE NO.	DESCRIPTION
1	Y-1F8 11000	Crank Arm Fixing Bolt
2	Y-1F8 98010	Clamp Bolt (M6 x 19) & Washer
3	Y-1C6 98020	Double Gear Fixing Bolt (M8 x 9.2) & Nut (4 sets)
4	Y-1BD98030	Inner Gear Fixing Bolt (M8 x 8.5 / 4 pcs.)
5	Y-1F8 22000	Chainring 22T (Black)
6	Y-1F8 98020	Chainring 32T (Black)
7	Y-1F8 98030	Chainring 44T (Black)
	Y-1F8 98040	Chainring 44T (Black) for Chain Guard
	Y-1F8 98090	Left Hand Crank Arm 165 mm
8	Y-1F8 98100	Left Hand Crank Arm 170 mm
	Y-1F8 98110	Left Hand Crank Arm 175 mm
	Y-1F8 98120	Left Hand Crank Arm 180 mm
	* 9	Y-1FU98120
10	Y-1F3 16000	Ring
11	Y-1FU98110	Adapter Unit
12	Y-1FU98090	Left Hand Adapter (B.C.1.37" x 24T) English Thread
13	Y-1F8 13000	Spacer (2.5 mm)
14	Y-1E5 98210	Inner Cover & O-Ring
15	Y-1TF 21000	O-Ring
16	Y-1FU98100	Right Hand Adapter (B.C.1.37" x 24T) English Thread
17	Y-1E4 98250	Chain Guard Fixing Bolt (4 pcs.)
18	Y-1F8 14000	Chain Guard
19	Y-130 09230	TL-FC33 Adapter Installation Tool
20	Y-130 09220	TL-FC16 Crank Arm Installation Tool

0510-2261D