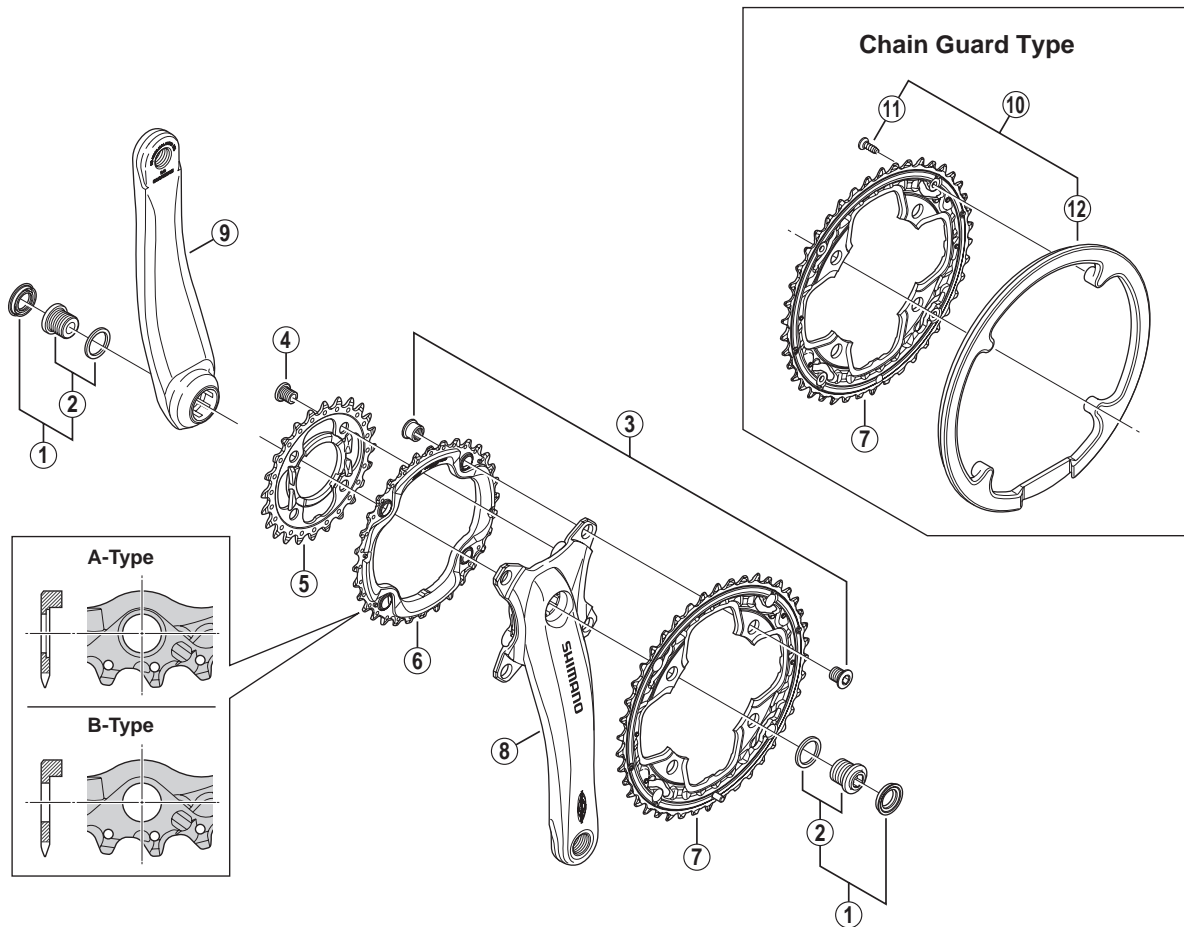


Front Chainwheel FC-M522



• Bolt circle diameter: 104 mm...(For outer gear and middle gear), 64 mm...(For inner gear)

FC-M770-10
FC-M660-10

ITEM NO.	SHIMANO CODE NO.	DESCRIPTION	INTERCHANGEABILITY	
1	Y1M098010	Crank Arm Fixing Bolt Unit		
2	Y1M098020	Crank Arm Fixing Bolt & Washer		
* 3	Y1MZ98010	Double Gear Fixing Bolt (M8 x 8.5) & Nut (4 sets) for 32T A-Type	B	B
	Y1LV98070	Double Gear Fixing Bolt (M8 x 8.5) & Nut (4 sets) for 32T B-Type	B	B
* 4	Y1LV98060	Inner Gear Fixing Bolt (M8 x 8.5 / 4 pcs.)	B	B
5	Y1N098010	Chainring 24T-AE (Black) & Chain Protector		
* 6	Y1LU98020	Chainring 32T-AE (A-Type) Discontinued	B	A
	Y1LV98080	Chainring 32T-AE (B-Type) w/Fixing Nut 4 pcs.	B	B
7	Y1N098020	Chainring 42T-AE (Black)	B	B
	Y1N098070	Chainring 42T-AE (Black) for Chain Guard	B	B
8	Y1N098030	Right Hand Crank Arm 170 mm (Silver)		
	Y1N098040	Right Hand Crank Arm 170 mm (Black)		
	Y1N098050	Right Hand Crank Arm 175 mm (Silver)		
	Y1N098060	Right Hand Crank Arm 175 mm (Black)		
9	Y1N005100	Left Hand Crank Arm 170 mm (Silver)		
	Y1N005110	Left Hand Crank Arm 170 mm (Black)		
	Y1N003100	Left Hand Crank Arm 175 mm (Silver)		
	Y1N003110	Left Hand Crank Arm 175 mm (Black)		
10	Y1N098080	Chain Guard & Fixing Screws		
11	Y1N098090	Chain Guard Fixing Screw (4 pcs.)		
12	Y1N013000	Chain Guard		

A: Same parts.

B: Parts are usable, but differ in materials, appearance, finish, size, etc.

Absence of mark indicates non-interchangeability.

Apr.-2012-3208B

© Shimano Inc. I

Specifications are subject to change without notice.

SHIMANO