

SHIMANO

SHIMANO (EUROPA) GmbH.
Kleinhülsen 1-3 4010 Hilden, Germany
Tel. 02103-5005-0

SHIMANO AMERICAN CORPORATION
One Shimano Drive, P.O. Box 19615, Irvine,
California U.S.A. 92713-9615 Tel. (714) 951-5003

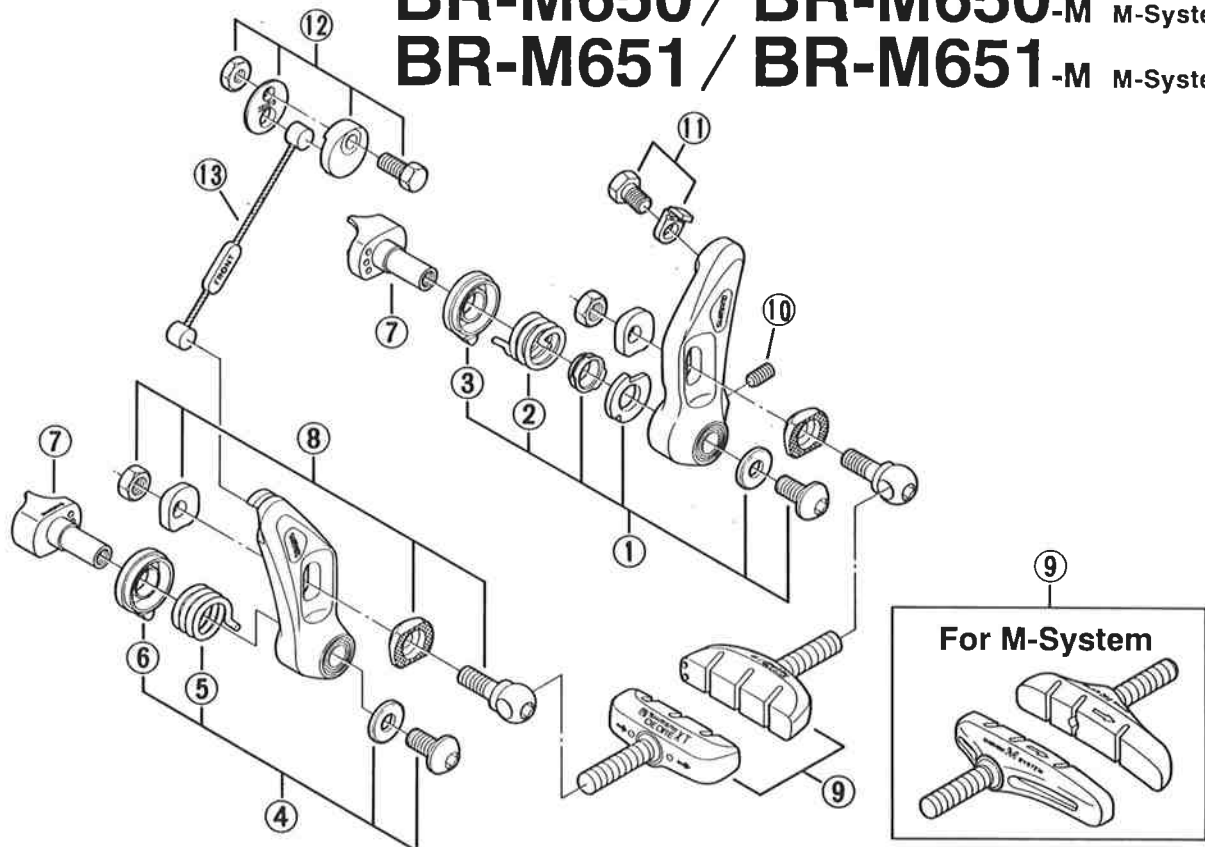
Small parts list for after market.

- You may photocopy this sheet and use it as an order form.
- Sie können dieses Blatt kopieren und als Bestellformular verwenden.
- Vous pouvez photocopier cette feuille et l'utiliser comme bon de commande.
- Dit blad kan gecopieerd en als bestelformulier gebruikt worden.
- Potete fotocopiare questo foglio e usarlo come modulo di commissione.

DEORE DX Cantilever Brake

BR-M650 / BR-M650-M M-System Type

BR-M651 / BR-M651-M M-System Type



Q'TY	ITEM NO.	PART NO.	DESCRIPTION
	1	83T 9806	Anchor Link Fixing Bolt Unit (M6 x 13.6)
	2	82Y 0600-1	Return Spring (ø1.7mm / White) for Anchor Link
	3	82Y 0800-1	Spring Cover (Gray) for Anchor Link
	4	83T 9807	Hooking Link Fixing Bolt Unit (M6 x 13.6)
	5	82Y 0700-1	Return Spring (ø1.7mm / Yellow) for Hooking Link
	6	82Y 0900-1	Spring Cover (Gray) for Hooking Link
	7	---	Front Mounting Boss for MTB (Radius 9.5mm)
	7	---	Rear Mounting Boss for MTB (Radius 7.5mm)
	8	83T 9802	Brake Shoe Fixing Bolt Unit
	* 9	83T 9801	Brake Shoes (Pair)
	9	83S 9801	Brake Shoes (4 pcs.) for M-System
	10	83A 1910	Adjusting Screw for Spring
	11	83B 9806	Wire Fixing Bolt (M6 x 9) & Plate
	12	82Y 9805	Cable Carrier Unit
	13	83T 1000	Link Wire for BR-M650 Front (ø2mm x 73mm / A)
	13	83T 1001	Link Wire for BR-M650 Rear (ø2mm x 82mm / B)
	13	82Y 1702	Link Wire for BR-M650-M Front / M651 / M651-M (ø1.6mm x 73mm / A)
	13	82Y 1720	Link Wire for BR-M650-M Rear / M651-M (ø1.6mm x 82mm / B)
	13	82Y 1700	Link Wire for BR-M651 / M651-M (ø1.6mm x 93mm / D)
	13	82Y 1701	Link Wire for BR-M651 / M651-M (Mud Guard Type / ø1.6mm x 106mm / C)